

Dist	COUNTY	ROUTE	POST MILES TOTAL PROJECT	SHEET No.	TOTAL SHEETS
1	MEN	1	60.462-60.680	3	10

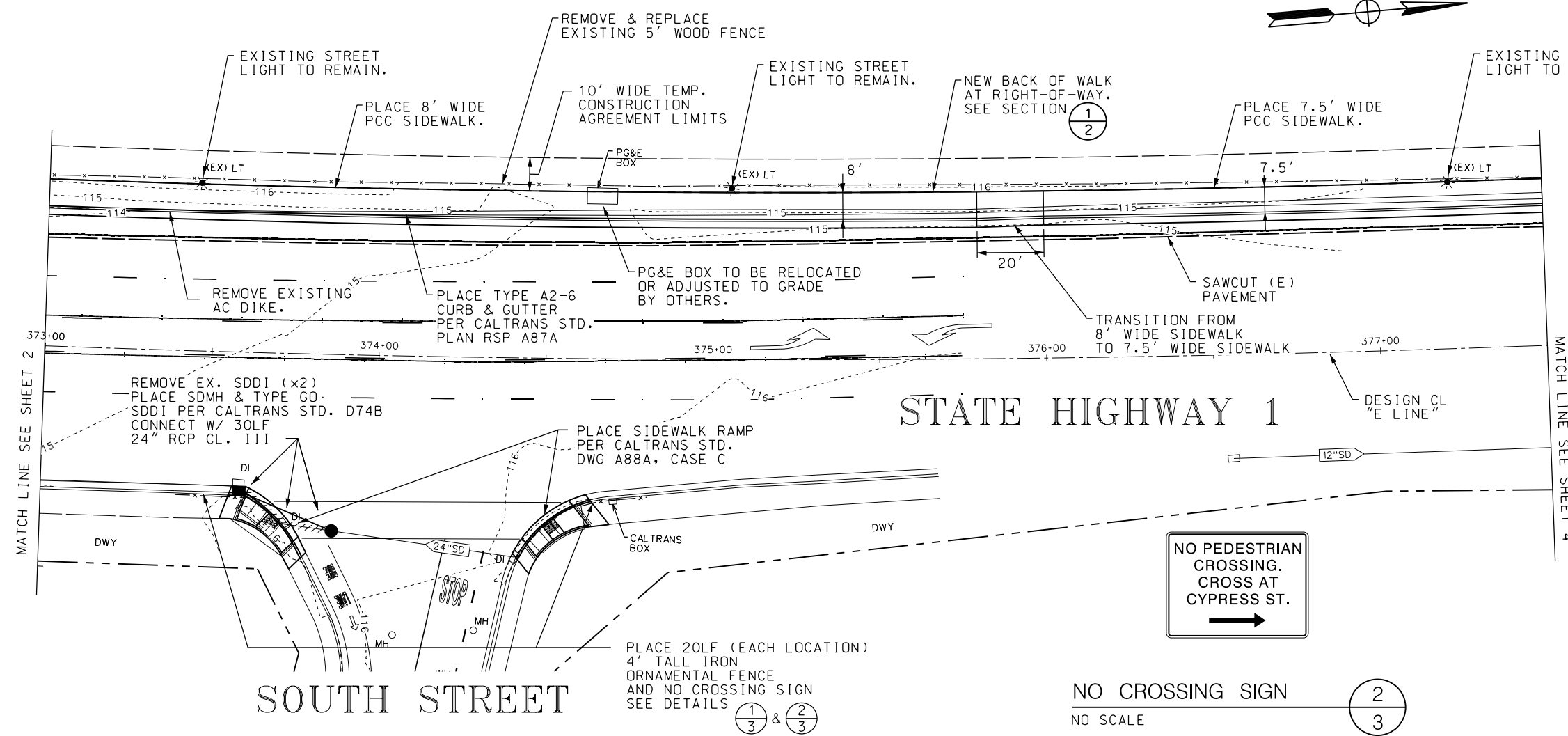
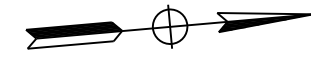
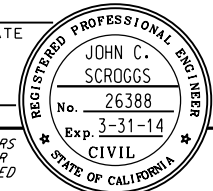
REGISTERED CIVIL ENGINEER DATE _____

PLANS APPROVAL DATE _____

THE STATE OF CALIFORNIA OR ITS OFFICERS OR AGENTS SHALL NOT BE RESPONSIBLE FOR THE ACCURACY OR COMPLETENESS OF SCANNED COPIES OF THIS PLAN SHEET.

KASL CONSULTING ENGINEERS
7777 GREENBACK LN. STE. 104
CITRUS HEIGHTS, CA 95610

CITY OF FORT BRAGG
416 NO FRANKLIN ST
FORT BRAGG, CA 95437



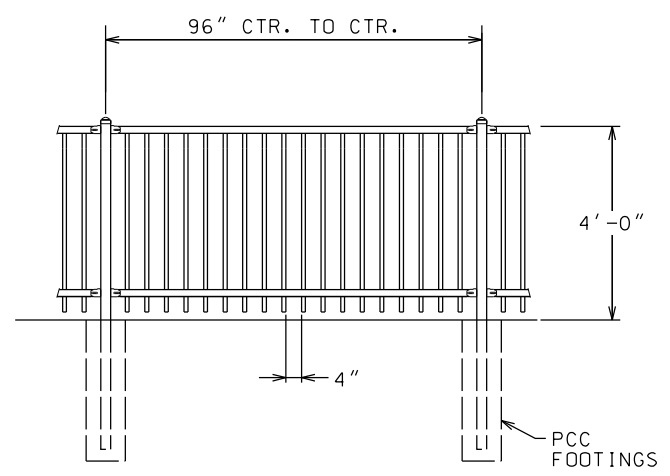
- LEGEND**
- ⊙ FOUND R/W MONUMENT
 - 112- EXISTING CONTOUR
 - - - R/W LINE
 - - - SAWCUT LINE
 - (E) UTILITY
 - NEW UTILITY

NO PEDESTRIAN CROSSING. CROSS AT CYPRESS ST.

NO CROSSING SIGN

NO SCALE

⊙ 2/3



NOTES:

1. FOOTING WIDTH TO BE (4)X POST WIDTH. MINIMUM DEPTH 36".

OPEN ORNAMENTAL IRON FENCE

NO SCALE

⊙ 1/3

60% SUBMITTAL PRELIMINARY NOT FOR CONSTRUCTION

6/18/2012

PLAN & PROFILE (2 OF 3)

SCALE: HOR 1" = 20' VER 1" = 2'

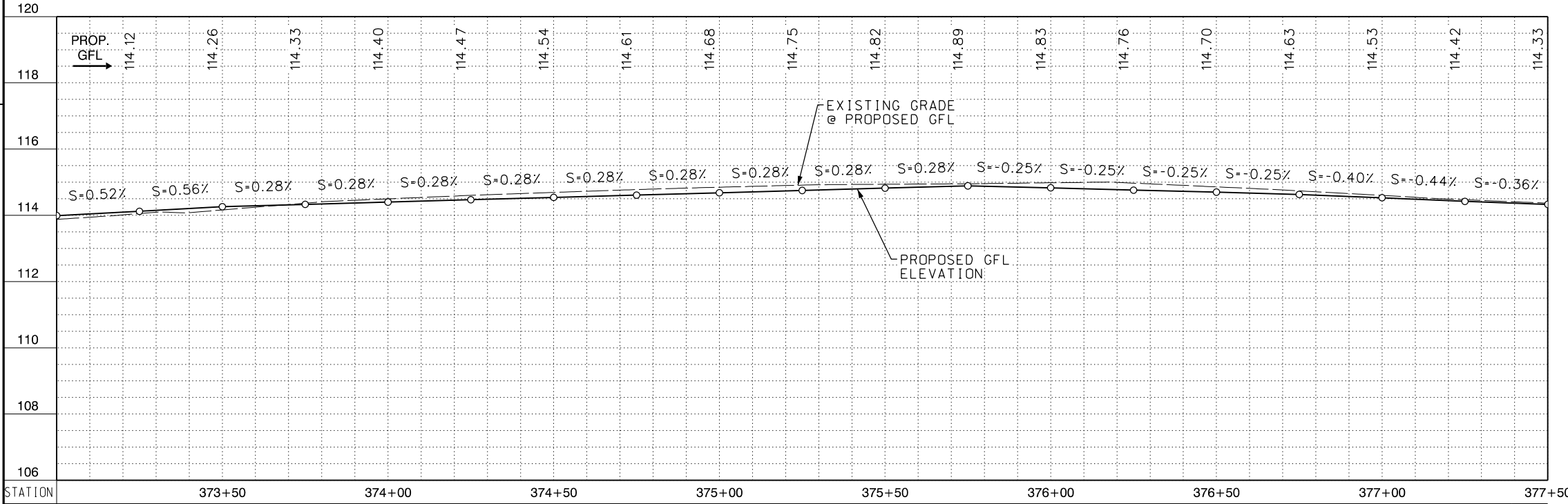
STATE OF CALIFORNIA - DEPARTMENT OF TRANSPORTATION

CONSULTANT FUNCTIONAL SUPERVISOR: JOHN C. SCROGGS, P.E.

CALCULATED/DESIGNED BY: JOHN C. SCROGGS, P.E.

REVISOR: WILLIAM N. OSTROFF, P.E.

DATE REVISED: _____



DIST	COUNTY	ROUTE	POST MILES TOTAL PROJECT	SHEET NO.	TOTAL SHEETS
1	MEN	1	60.462-60.680	4	10

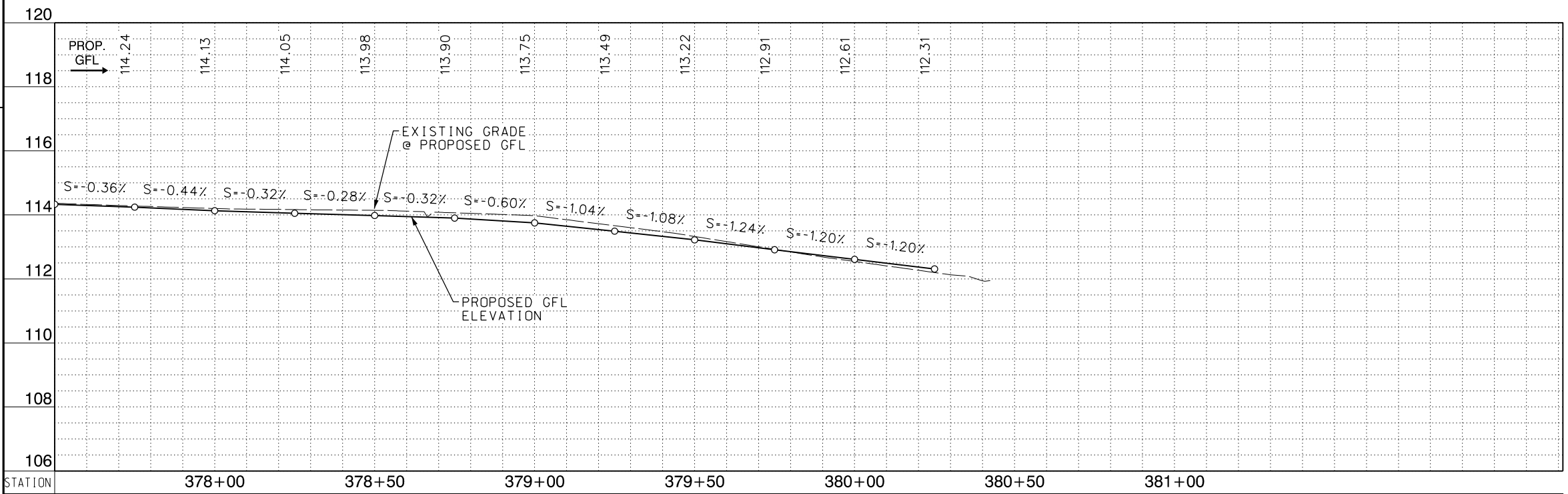
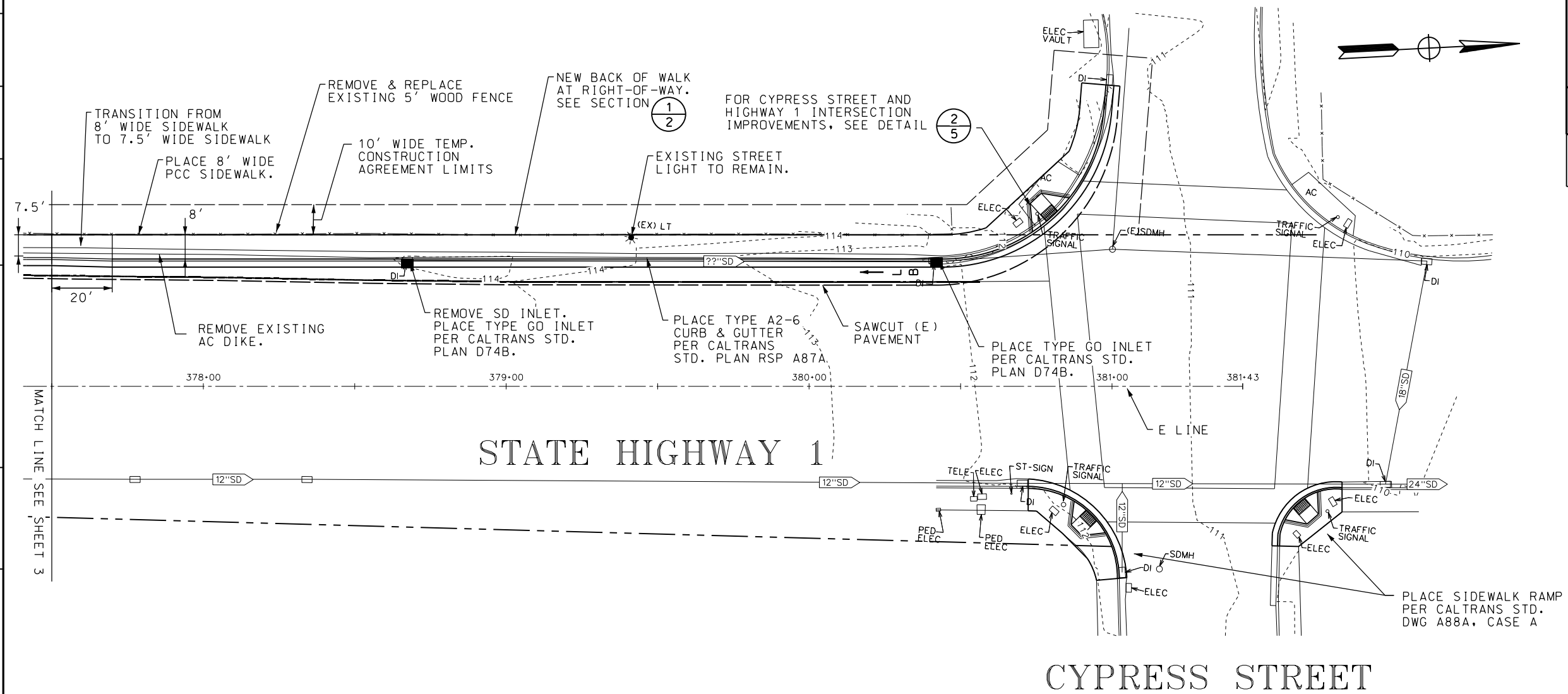
REGISTERED CIVIL ENGINEER DATE _____
 PLANS APPROVAL DATE _____
 THE STATE OF CALIFORNIA OR ITS OFFICERS OR AGENTS SHALL NOT BE RESPONSIBLE FOR THE ACCURACY OR COMPLETENESS OF SCANNED COPIES OF THIS PLAN SHEET.



KASL CONSULTING ENGINEERS
 7777 GREENBACK LN. STE. 104
 CITRUS HEIGHTS, CA 95610

CITY OF FORT BRAGG
 416 NO FRANKLIN ST
 FORT BRAGG, CA 95437

- LEGEND**
- ⊙ FOUND R/W MONUMENT
 - 112- EXISTING CONTOUR
 - - - R/W LINE
 - - - SAWCUT LINE
 - (E) UTILITY
 - NEW UTILITY



60% SUBMITTAL
 PRELIMINARY NOT
 FOR CONSTRUCTION
 6/18/2012

PLAN & PROFILE (3 OF 3)
 SCALE: HOR 1" = 20' VER 1" = 2'

STATE OF CALIFORNIA - DEPARTMENT OF TRANSPORTATION
 CONSULTANT FUNCTIONAL SUPERVISOR
 JOHN C. SCROGGS, P.E.
 CALCULATED/DESIGNED BY
 CHECKED BY
 WILLIAM N. OSTROFF, P.E.
 JOHN C. SCROGGS, P.E.
 REVISED BY
 DATE REVISED

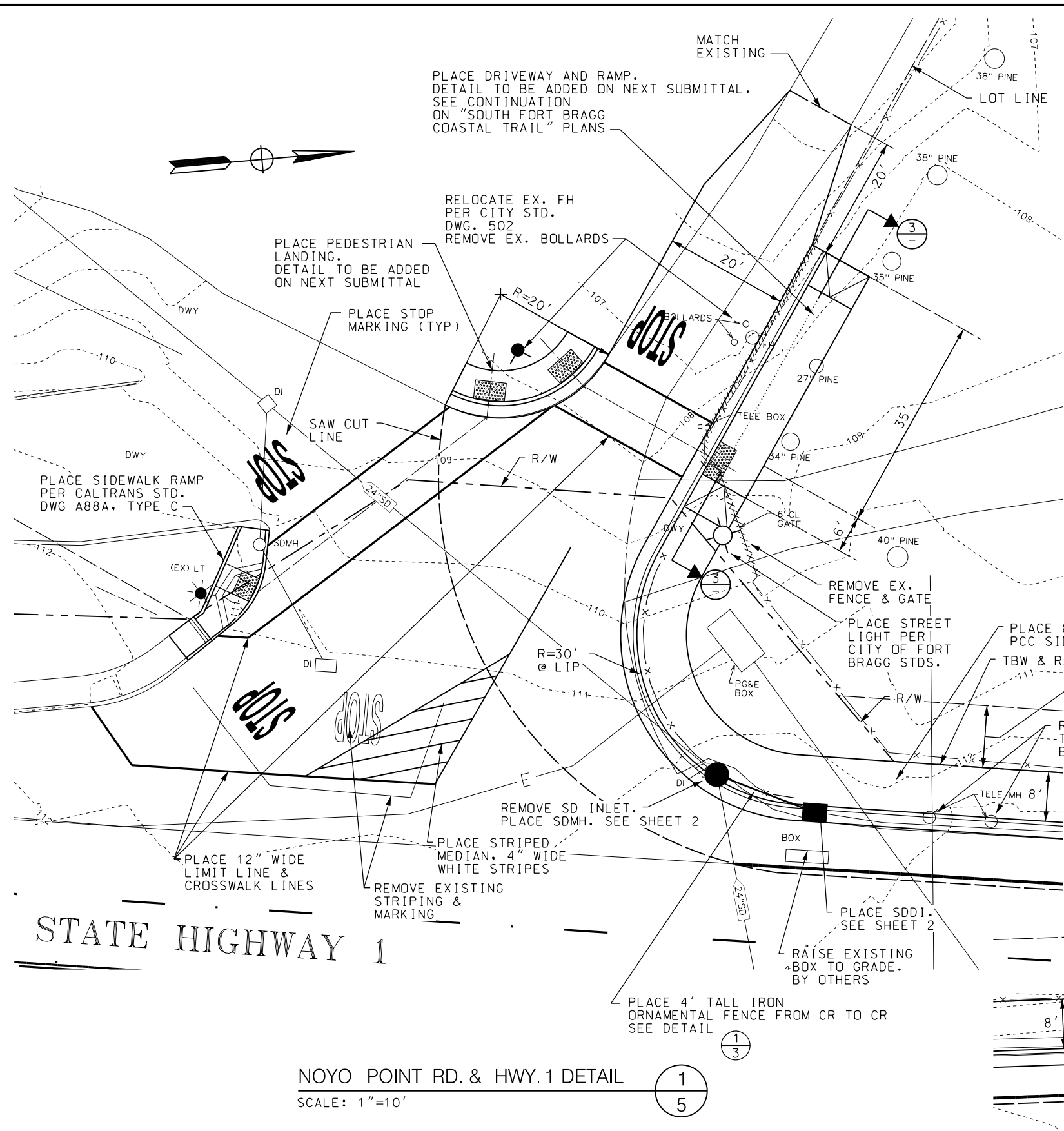
LAST REVISION DATE PLOTTED = 6/18/2012
 MAY 2012 TIME PLOTTED = 3:48:40 PM

Dist	COUNTY	ROUTE	POST MILES TOTAL PROJECT	SHEET No.	TOTAL SHEETS
1	MEN	1	60.462-60.680	5	10

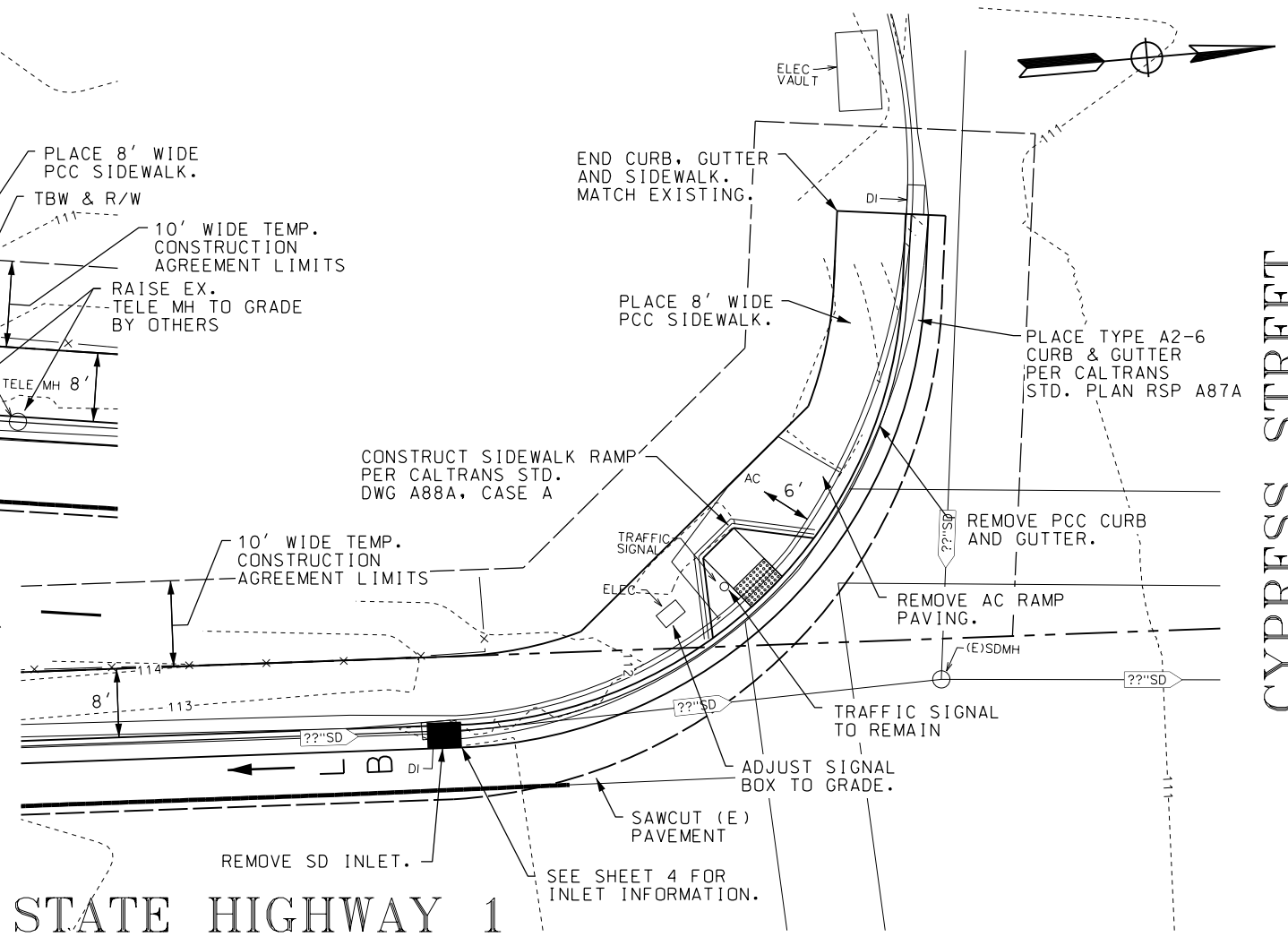
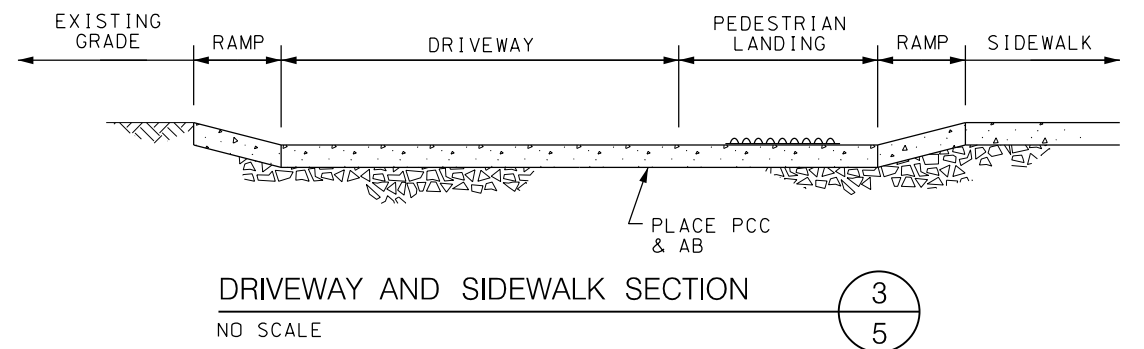
REGISTERED CIVIL ENGINEER DATE	
PLANS APPROVAL DATE	

THE STATE OF CALIFORNIA OR ITS OFFICERS OR AGENTS SHALL NOT BE RESPONSIBLE FOR THE ACCURACY OR COMPLETENESS OF SCANNED COPIES OF THIS PLAN SHEET.

KASL CONSULTING ENGINEERS 7777 GREENBACK LN. STE. 104 CITRUS HEIGHTS, CA 95610	CITY OF FORT BRAGG 416 NO FRANKLIN ST FORT BRAGG, CA 95437
--	--



NOYO POINT RD. & HWY. 1 DETAIL
SCALE: 1"=10'



CYPRESS ST. & HWY. 1 DETAIL
SCALE: 1"=10'

DETAILS
SCALE AS SHOWN

60% SUBMITTAL
PRELIMINARY NOT
FOR CONSTRUCTION
6/18/2012

STATE OF CALIFORNIA - DEPARTMENT OF TRANSPORTATION
CONSULTANT FUNCTIONAL SUPERVISOR
JOHN C. SCROGGS, P.E.
CALCULATED/DESIGNED BY
WILLIAM N. OSTROFF, P.E.
CHECKED BY
JOHN C. SCROGGS, P.E.
REVISED BY
DATE REVISED