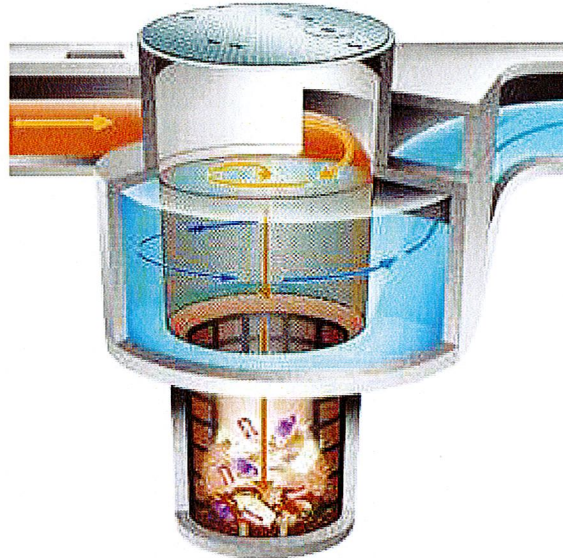


## CCP-1HF Continuous Deflective Separator (CDS) Hydrodynamic separator



### Company Contact:

Contech Construction Products, Novato, CA  
Sales contact: Curt Kruger, 415-897-8587 or  
Paul Jacob, 925-283-1205  
[krugerc@contech-cpi.com](mailto:krugerc@contech-cpi.com) [jacobp@contech-cpi.com](mailto:jacobp@contech-cpi.com)  
<http://contech-cpi.com>

**Meets San Francisco Bay Water Board full capture specifications**

**Storage capacity:** 25-134 cubic feet depending on size

**Replacement Parts:** Available

### Vendor's maintenance estimate:

"We recommend at least two inspections during the first year of operation, with the inspection schedule adjusted thereafter based on experience. The rate at which the system collects pollutants will depend more heavily on site activities than the size of the unit."

**Delivery Time:** Lead time is 3-6 weeks after release to manufacture. If final construction drawings do not accompany the order, then delivery is 3-6 weeks after such drawings are approved.

**Material:** concrete, fiberglass, stainless steel, cast iron

**Warranty:** 2 yrs

**Pricing:** See over.

### Comments from reference checks

#### Device effectiveness in capturing trash

"Trash is mostly removed. The first flush captures all the trash."

#### Maintenance issues/experience

Also captures sediments, oil and grease. "Each unit requires less and less maintenance after the first flush. Vector control is an issue. CDS units capture a lot of trash." "Vector control is an issue. I suggest plugging some of the holes to prevent vectors from entering the unit." "I would suggest the addition of a screen to keep vectors out of the top of the CDS unit. We had a problem with a lot of mosquitoes one year." "Due to its large footprint and required depth placement, I would also evaluate smaller and similar products (e.g., Vortech) that CONTECH markets. They may work just as well as a CDS unit."

### Bay Area-wide Trash Capture Demonstration Project

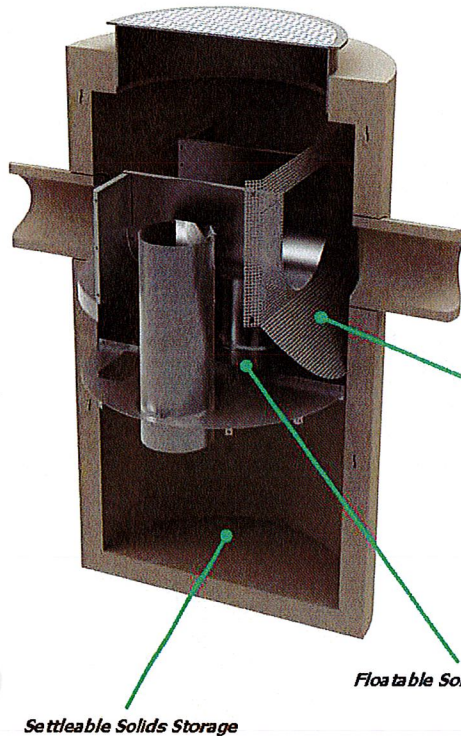
Funded by the Clean Water State Revolving Fund and the American Recovery and Reinvestment Act



# High Flow Capacity Device

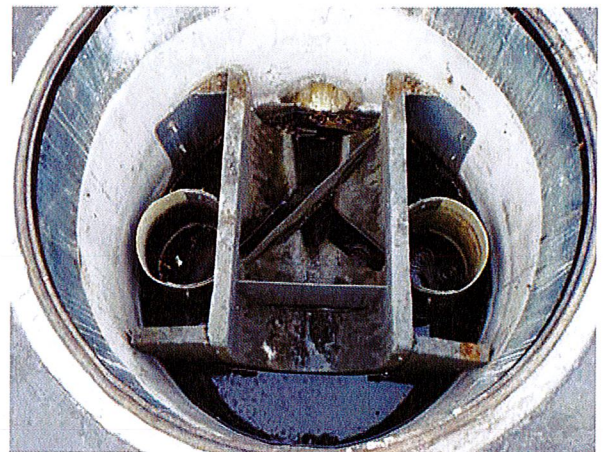
## KS-7HF FloGard® Dual-Vortex Hydrodynamic Separator

Hydrodynamic separator with trash capture screen



TRASH REMOVAL CAPACITY CHART				
Model	Inside Diameter (in)	Settleable Solids Storage (cu ft)	Floatable Solids Storage (cu ft)	Treated Flow Capacity (cfs)
DVS-36-S	36	8	6	0.50
DVS-48-S	48	18	15	1.25
DVS-60-S	60	35	29	2.50
DVS-72-S	72	60	50	4.25
DVS-84-S	84	95	82	6.50
DVS-96-S	96	142	123	9.50
DVS-120-S	120	278	242	16.8
DVS-144-S	144	481	416	26.4

*Inclined Outlet Screen  
Type 304 Stainless Steel  
0.1875 in./4.76 mm  
Staggered Round Perforations*



### Company Contact:

KriStar Enterprises, Inc., Santa Rosa, CA  
Sales contact: Sue Lillo, 800-579-8819  
[slillo@kristar.com](mailto:slillo@kristar.com)  
<http://www.kristar.com>

**Meets San Francisco Bay Water Board full capture specifications**

**Storage capacity:** 8-481 cubic feet depending on size of device

**Replacement Parts:** Available

### Vendor's maintenance estimate:

"It is generally recommended that filters be maintained when they have reached half their maximum storage volume."

**Warranty:** 5 yrs

**Material:** 304 stainless steel, precast concrete

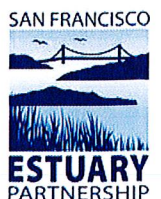
**Delivery Time:** Typical time from receipt of order to installation will range from 3 to 5 weeks

**Pricing:** See over.

**Installed:** City of Fremont

## Bay Area-wide Trash Capture Demonstration Project

Funded by the Clean Water State Revolving Fund and the American Recovery and Reinvestment Act





# High Flow Capacity Device

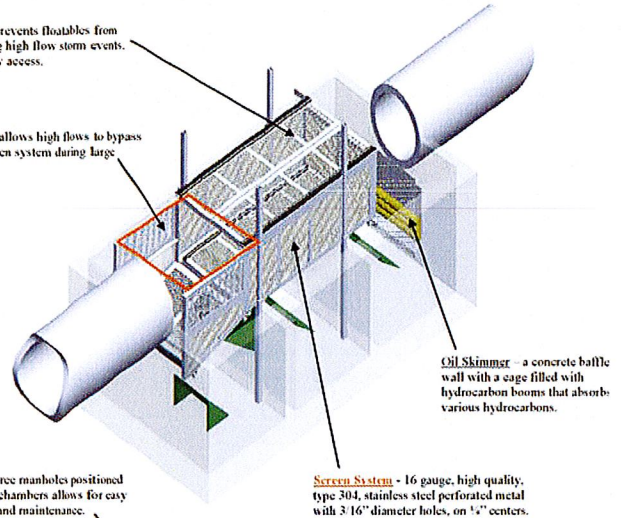
## BC-5HF Nutrient Separating Baffle Box

Inline treatment system for Total Suspended Solids, Hydrocarbons (oils and grease), and Gross Solids



**Screen Lid** - prevents floatables from scouring during high flow storm events. Hinged for easy access.

**Bypass Area** - allows high flows to bypass around the screen system during large storm events.



**Access Hatches** - three manholes positioned over each sediment chamber allows for easy access for cleaning and maintenance.

**Screen System** - 16 gauge, high quality, type 304, stainless steel perforated metal with 3/16" diameter holes, on 1/2" centers.

### Company Contact:

Bio Clean Environmental Services, Inc.,  
Oceanside, CA  
Sales contacts: Greg Kent, (760) 433-7640  
or Kirk Vallejo, (760) 681-9583  
[gkent@biocleanenvironmental.net](mailto:gkent@biocleanenvironmental.net)  
[kvallejo@biocleanenvironmental.net](mailto:kvallejo@biocleanenvironmental.net)  
<http://www.biocleanenvironmental.com>

**Meets San Francisco Bay Water Board full capture specifications**

**Storage capacity:** "The treatment capacity of this NSBB can easily exceed the one-year, one-hour intensity when properly sized."

**Replacement Parts:** Available

### Vendor's maintenance estimate:

"inspect a minimum of once every six months; cleaning and debris removal maintenance, minimum of once a year; replacement of hydrocarbon booms, once a year."

**Warranty:** 5 yrs

**Material:** precast concrete, 6061-T6 aluminum, stainless steel, steel reinforcement, laminated fiberglass

**Delivery Time:** 1 to 5 units, 8 weeks; 6 to 15 units, 10 weeks; 16 to 25 units, 12-16 weeks

**Pricing:** See over.

No reference information available

## Bay Area-wide Trash Capture Demonstration Project

Funded by the Clean Water State Revolving Fund and the American Recovery and Reinvestment Act

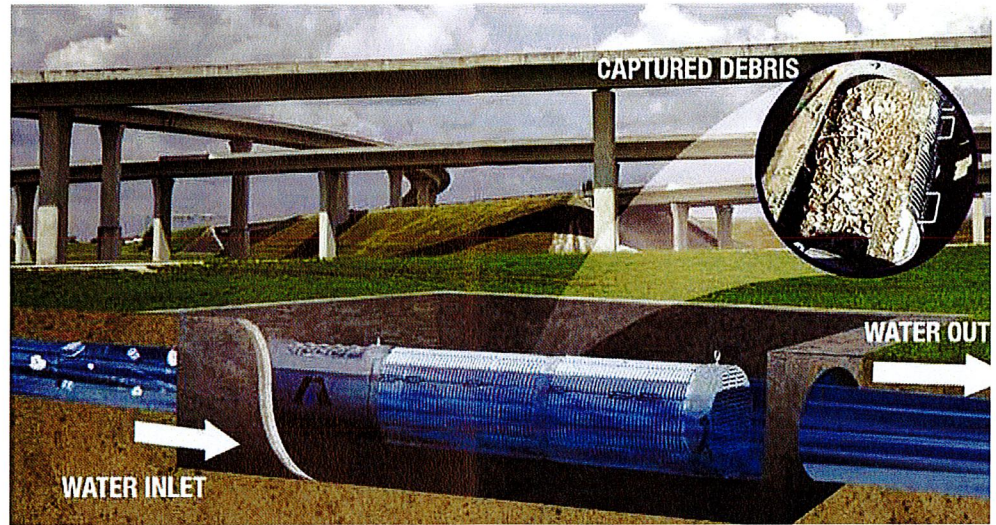




# High Flow Capacity Device

## RMC-1HF Storm Flo Screen

Linear radial gross solids removal device (GSRD)



<b>Company Contact:</b> Roscoe Moss Company, Los Angeles, CA Sales contact: Kevin McGillicuddy, 323-263-4111 <a href="mailto:kmc@roscoemoss.com">kmc@roscoemoss.com</a> <a href="http://roscoemoss.com">http://roscoemoss.com</a>	<b>Meets San Francisco Bay Water Board full capture specifications</b>
<b>Storage capacity:</b> 4.4-70.7 cubic feet depending on screen diameter	<b>Replacement Parts:</b> Available
<b>Vendor's maintenance estimate:</b> "It is recommended that the device be cleaned when half full. Cleaning the interior is best accomplished using a vehicle-based vacuum unit. The captured debris is accessed through large hatchways that are located on top of the screen. There is no maintenance required on the device itself other than cleaning of the interior."	<b>Warranty:</b> 2 yrs
<b>Material:</b> Type 304L or 316L grade steel, or galvanized steel	<b>Delivery Time:</b> Depending on size and number of devices, delivery is estimated to be 4 to 8 weeks from receipt of order
<b>Pricing:</b> See over.	

### Comments from reference checks

#### Device effectiveness in capturing trash

The overall effectiveness of capturing trash with the screen was excellent. The field performance and the vendor's claims regarding the amount of anticipated trash captured and the frequency of cleaning the device were the same.

Vendor does not install the device. The reference spoken to installed the device themselves and did not experience a large amount of rainfall. The reference recommends doubling the size of the device you think will handle the biggest storm event in your area. Installation requires know how and heavy-duty equipment.

### Bay Area-wide Trash Capture Demonstration Project

Funded by the Clean Water State Revolving Fund and the American Recovery and Reinvestment Act

