



RESPONSIBLE MEDICAL CANNABIS
CONCENTRATES

Vision and Mission

- RootOne Botanicals was formed with the purpose of bringing solid and transparent business practices to the cannabis industry
- Our purpose is to create a model for community safety, integrity, transparency and access to high quality, safe products.
- We are local residents and community members along with California business leaders.

Overview

- RootOne Botanicals is a California cannabis concentrate manufacturing company that serves the California medical cannabis industry.
- We will manufacture a variety of concentrate products for use by other medical cannabis product manufacturers as well as for dispensary patients.
- Our focus is on quality and consistency.

Goals

- To create a model medical cannabis processing facility that recognizes and respects the need for community safety, integrity, and transparency while providing the market with safe and high quality products.
- To operate a medical cannabis concentrates processing facility dedicated to wholesale manufacturing and distribution

What does this mean?

- The facility will be hydrocarbon free with no butane, hexane or propane used in production
- Oils and other concentrates will be produced using supercritical CO₂ extraction technology as well as other environmentally friendly processes

How will it work?

- We will design and employ safe processes using proven manufacturing techniques similar to those currently used in the food and beverage industries.



How will it work?

- Supercritical Fluid Extraction or SFE is a commonly used method in the food and beverage and the pharmaceutical industries

For example:

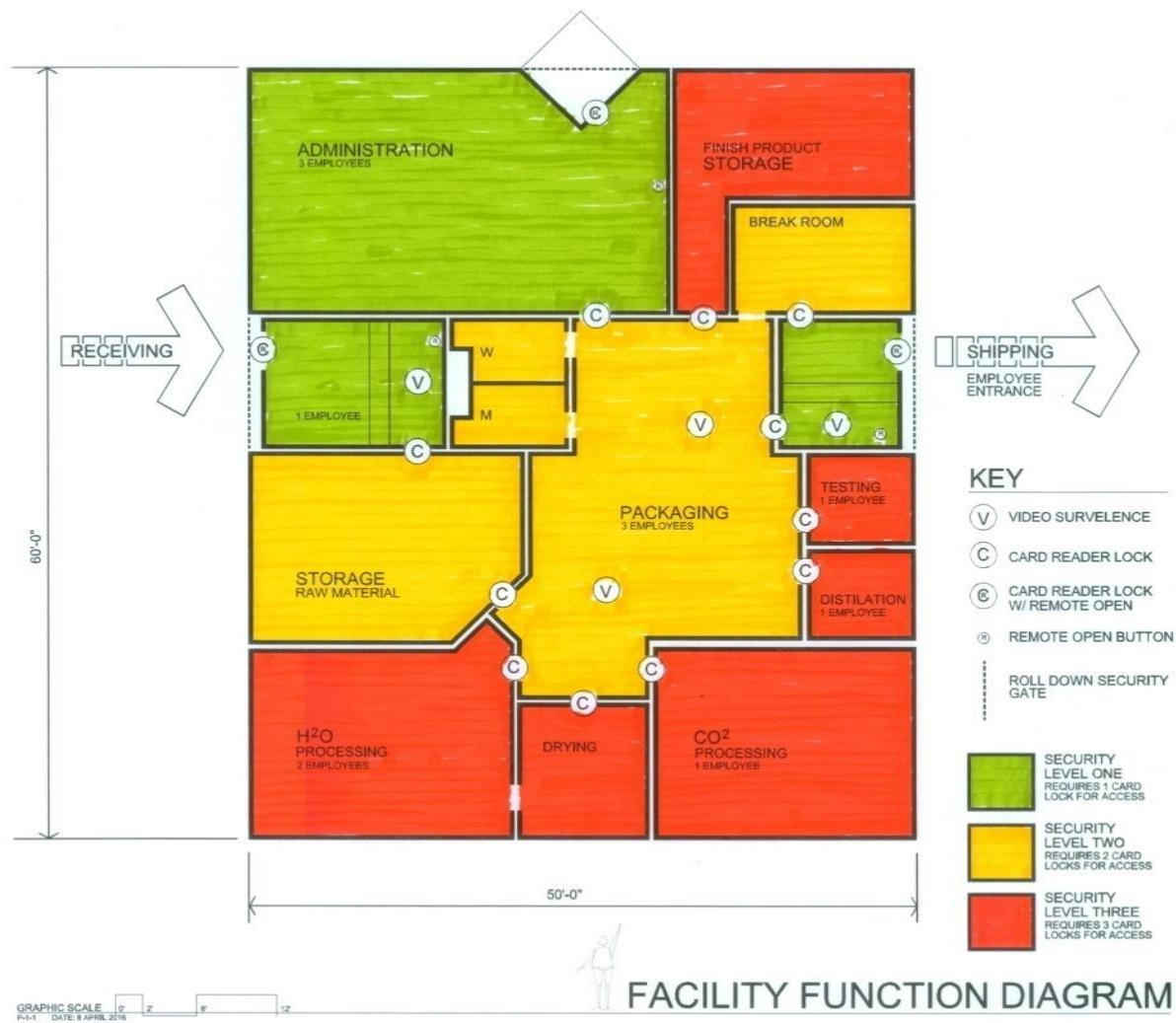
- Extractions of:
 - Essential oils (fish and vegetable)
 - Various flavors and spices
 - Remove fats from food production
 - Decaffeinating coffee or tea

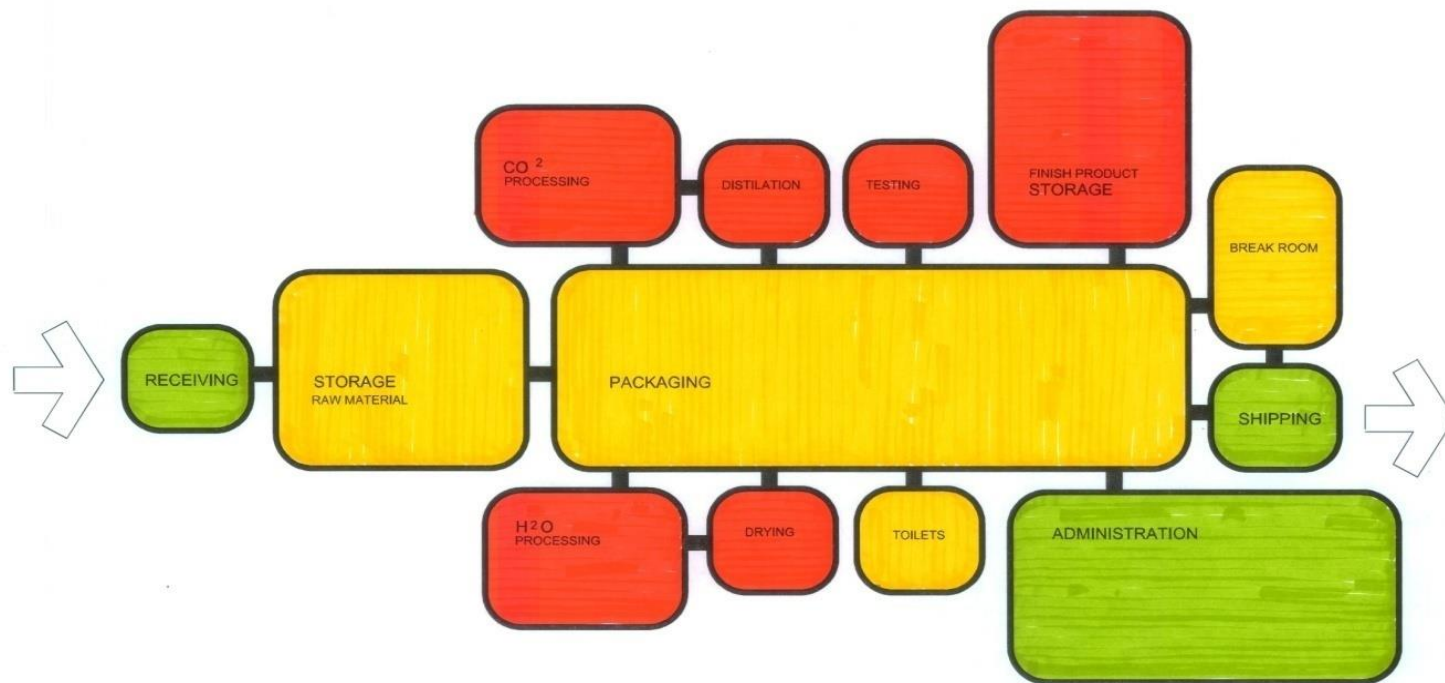


The Facility

- will support CO₂ concentrate manufacturing, H₂O concentrate manufacturing, alcohol distillation, packaging room, and storage space
- It will provide 20 in house jobs, plus a sales and material acquisition team
- 24 hour productions







FACILITY FLOW DIAGRAM

Safety and Security

- This will not be a store front
- A DISCREET manufacturing facility.
- Utilization of a cloud based security monitoring around the exterior of the building, entries, exits, processing, packaging, and storage areas
- Tiered keyless entry for increase security throughout the plant
- Implementing California's "Track and Trace" system. All material/s unprocessed and finished will have a bill of lading identifying type, amount, origin and destination

Community and Environment Impact

- There will be limited environment impact on neighboring places or businesses such as:

SMELLS

NOISE

TRAFFIC






EMISSIONS



Community Benefits through Regulation

- To regulate a cannabis business is being part of a harm reduction plan for our community
- Reducing the negative impact caused by:
 - trespass grows on private and public lands
 - Illegal hash labs
 - Black market sales and distribution
- Regulating and monitoring the cannabis industry may reduce crime and the burdens on law enforcement
- Providing a transparent industry will transition the stigma that surrounds the current practices
- Products that are created with safe practices and clean results reduces the harm from improper production practices

Supporting Fort Bragg's Economic Strategy

City of Fort Bragg CaliforniaCITY OF FORT BRAGG		
		<p>Economic Development Strategy</p> <p>2014-2019</p> <p><i>Marie Jones & Jennifer Owen</i></p>
		
		2014
		
Funding for this activity was provided, in part, by Community Development Block Grant #11-PTEC-7624		

VISION

“The City of Fort Bragg is a sustainable working town with a diversified economy and well-paying jobs that serves the Mendocino Coast as a cultural and economic Center”



Economic Impact

- RootOne Botanicals is a businesses that will prosper in Fort Bragg's unique environment, has a local connection, and will result in quality jobs.
- Projected 20+ employees at capacity
- Utilization of other local businesses and resources
- Increase revenue to our Community

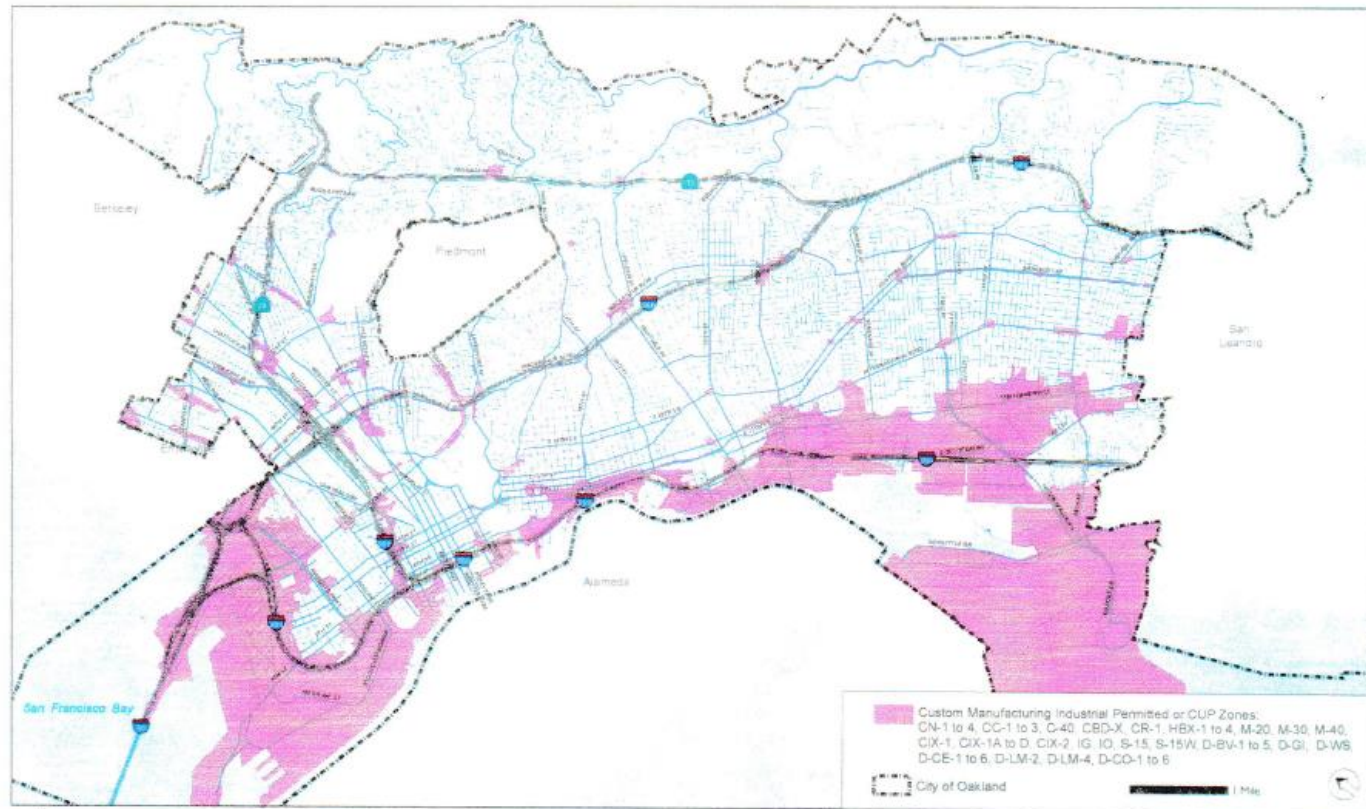
Municipal Approaches to Permitting Medical Cannabis Manufacturing Businesses

Alex Zavell
Senior Regulatory Analyst
Robert A. Raich, P.C.
May 9, 2016

Oakland

- 5.81.045 - Manufacturing of medical marijuana.
 - **“A. Proposed locations for manufacturing of medical cannabis products using nonvolatile solvents shall be in areas where "custom manufacturing industrial" or its equivalent use, is permitted by right under the Oakland Planning Code, as may be amended, or in residential zones if the manufacturing is compliant with the restrictions imposed on cottage food operators under the California Homemade Food Act. Chapter 6.1 (commencing with Section 51035) of Part 1 of Division 1 of Title 5 of the Government Code.**
 - **B. Proposed locations for manufacturing of medical cannabis products using volatile solvents shall be in areas where "general manufacturing industrial" or its equivalent use, is permitted by right under the Oakland Planning Code, as may be amended.”**

Non-Volatile Medical Cannabis Manufacturing in Oakland

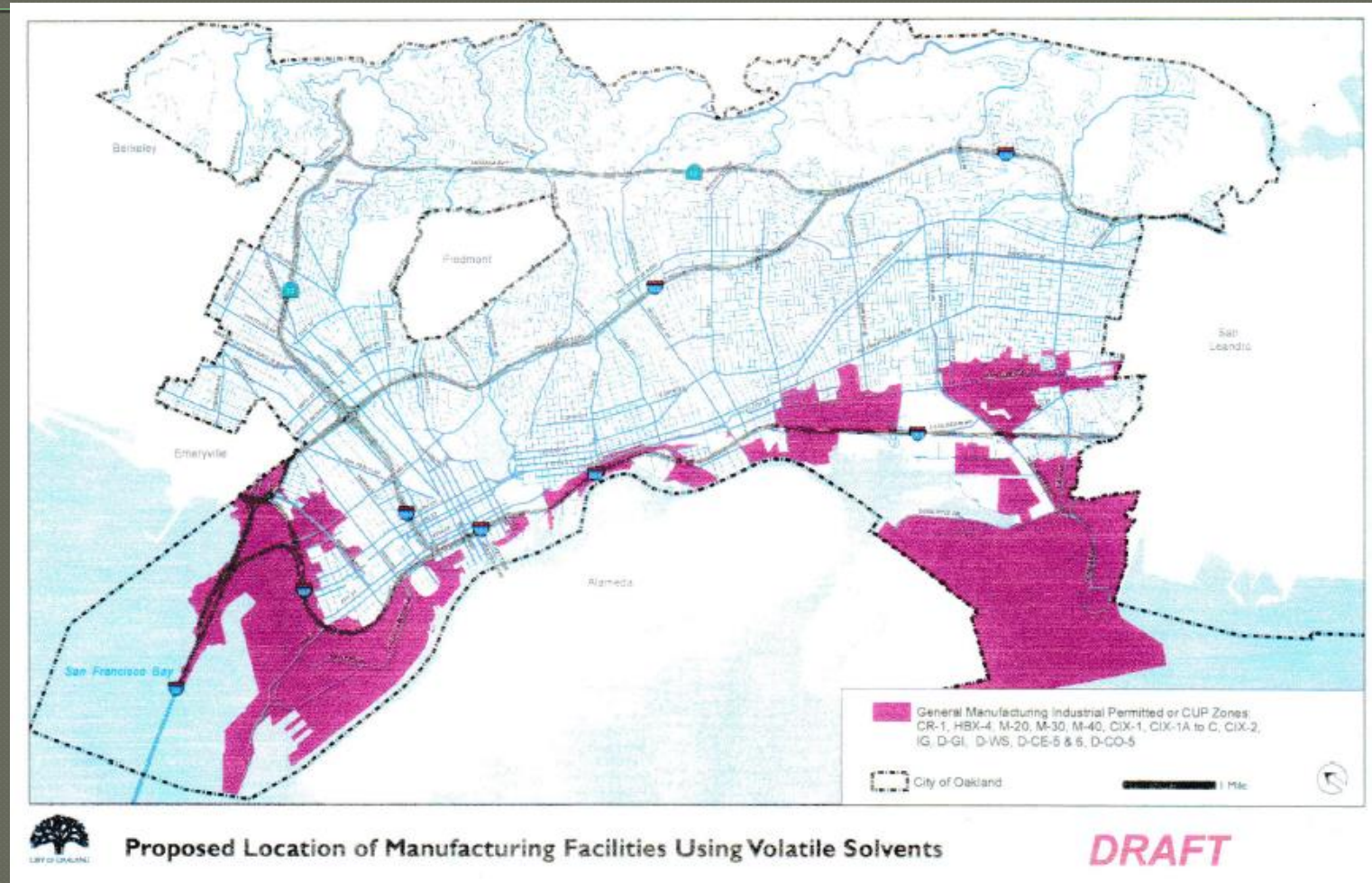


Proposed Location of Manufacturing Facilities Using Non-Volatile Solvents

DRAFT

Permitted in zones allowing custom manufacturing

Volatile Medical Cannabis Manufacturing in Oakland



Permitted in zones allowing general manufacturing

Humboldt

- Section 313-55.4 of Chapter 3 of Division 1 of Title III: Commercial Cultivation, Processing, Manufacturing and Distribution of Cannabis for Medical Use Coastal Zone Land Use Regulation
- Section 55.4.8.5
 - “Manufacturing of commercial cannabis for medical use shall be a conditionally permitted use inside the Coastal Zone in zoning districts CG, MB, ML, and MG, subject to a Special Permit and the conditions and limitations set forth in this Section.”

● 9.28.130 Medical Marijuana Innovation Zone

- “A. Purpose. The MMIZ combining zone is applied to all sites and areas identified in Figure 2-25. The intent of the MMIZ is to establish an area where niche manufacturing businesses that produce medical marijuana related products such as edibles, oils, tincture sprays, lotions and a variety of other products can be safely produced. Medical marijuana cultivation, processing, and warehousing are also allowed.”

Map of the Medical Marijuana Innovation Zone (MMIZ) Combining Zone Study Area in the City of Astoria. The map shows the MMIZ Combining Zone Study Area (thick black outline) and the MMIZ Combining Zone - Area 1 (light gray) and MMIZ Combining Zone - Area 2 (dark gray). The map includes street names such as Valley West Blvd, Valley East Blvd, Spruce Way, Monterey Dr, Olympia St, Trojan St, Gluntoll Ln, Boyd Rd, Courtney Cir, Alder Grove Rd, West End Rd, West End Ct, and Belle Falor Ct. The map also shows the MMIZ Combining Zone - Area 1 and MMIZ Combining Zone - Area 2. A legend in the bottom right corner defines the symbols for the MMIZ Combining Zone Study Area, MMIZ Combining Zone - Area 1, MMIZ Combining Zone - Area 2, and Parcel. A scale bar indicates distances from 0 to 1,200 feet, and a north arrow is present.

Cathedral City

● 5.88.065(c)(5) - Extraction Requirements.

- a. Prior to engaging in the extraction of medical cannabis or the production of any cannabis concentrate, a medical cannabis business must receive approval from the city manager. In order to obtain approval, the medical cannabis business must complete all required forms and pay any required fees. These forms must detail all types of extraction and production of cannabis concentrate to occur on the licensed premises. The city manager shall only approve a medical cannabis business to engage in the extraction of medical cannabis or the production of cannabis concentrate after any necessary facility reviews have been conducted by the building department or fire department. Once approved, a medical cannabis business may only engage in the types of extraction of medical cannabis or production of cannabis concentrate explicitly listed on the forms submitted to the city manager. The city manager shall develop procedures for approval of medical cannabis extraction plans.
- b. Within the limitations set forth by state law, a medical cannabis business extracts medical cannabis or produces cannabis concentrate using a solvent must use a professional-grade, closed-loop extraction system capable of recovering the solvent used.



Tawnie Logan
Executive Director

SONOMA COUNTY GROWERS ALLIANCE

Commercial Cannabis Regulations
City of Fort Bragg

707.861-0051

SCGAlliance.com

tawnie@SCGAlliance.com





License Types

- Type 1
- Type 1A
- Type 1B
- Type 2
- Type 2A
- Type 2B
- Type 3
- Type 3A
- Type 3B
- Type 4
- Type 5
- Type 6
- Type 7
- Type 8
- Type 9
- Type 10
- Type 10A
- Type 11
- Type 12

Specialty Outdoor; up to 5,000 square feet of total canopy size
Specialty Indoor

Specialty Mixed Light

Small Outdoor; 5,001 - 10,000 square feet
Small Indoor

Small Mixed Light

Medium Outdoor; 10,001 sq. ft. to one acre (limited licenses available)
Medium Indoor; between 10,001 - 22,000 square feet

Medium Mixed Light; between 10,001 and 22,000 square feet

Nursery

Undefined

Manufacturer; non-volatile solvents

Manufacturer; volatile solvents

Testing

Undefined

Dispensary; General

Dispensary; (No more than 3 retail, 4 cultivation, 1 manufacturing total)

Distribution; (must obtain Type 12 to qualify)

Transportation



Considerations for Fort Bragg

◇ **Business Development**

- Economic impact evaluation
- Local tax and fee structures

◇ **Distribution, Transportation & Lab Testing**

- Create the core services necessary for compliant operators to contract local businesses.

◇ **Cultivation**

- The production of flower and manufactured goods will be required to be tested/transported/distributed by state licensed operators for legal sale.

◇ **Dispensary, Delivery**

- Ensure the legal market has outlets to showcase local goods produced.



Community Outreach & Stakeholder Involvement

◇ Business Organizations

- *Both inside and outside the cannabis industry*

◇ Neighborhood Groups

- *Vital for success*

◇ Environmental Groups

- *Preserve sustainability of our natural resources*

◇ General Public

- *Educate implementation of MMRSA and local policy*

◇ Adjacent Cities and Counties

- *To learn from their successes and mistakes*

◇ Resource Agencies

◇ Property Owners

- *Help them understand their rights and responsibilities*



Prospective Work Plan

- Convene a cannabis regulations subcommittee
- Create task force to develop policy options
 - Comprised of city staff and stakeholders
- Hold public hearings
 - Enlist community response and support
- Draft an ordinance which meets the needs of the existing local community and the council.
- Move to consideration by the Ft Bragg Council



Tawnie Logan
Executive Director

SONOMA COUNTY GROWERS ALLIANCE

707.861-0051

SCGAlliance.com

tawnie@SCGAlliance.com

