

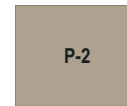
SIGN B: D/F Monument Sign External Lighting
Scale: 1" = 1'-0"

SIDE VIEW
Scale: 1" = 1'-0"

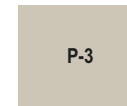
COLORS AND MATERIALS:



P-1
Benjamin Moore
2107-40 Driftwood



P-2
Benjamin Moore
985 Indian River



P-3
Benjamin Moore
983 Smokey Taupe



Nichiha Wood
Color "Ash"



Stone Veneer
to match building

- 1) This sign is intended to be installed in accordance with the requirements of Article 600 of the National Electrical Code and/or other applicable local codes.
This includes proper grounding and bonding of the sign.
2) The location of the disconnect switch after installation shall comply with the Srtical 600.6 (A)(1) of the National Electrical Code

USS UNITED
SIGN SYSTEMS

C.S.C.L. # 718965

5201 Pentecost Drive
Modesto, Calif. 95356
1-800-481-SIGN
FAX (209) 543-1326

DESIGN MANUFACTURING INSTALLATION MAINTENANCE

JOB #: 00000
CLIENT: GROCERY OUTLET
CONTACT:
DATE: 3-6-19
PROJECT LOCATION:
825 S. FRANKLIN ST
FORT BRAGG, CA

SALESPERSON: SEAN CAMPBELL
DRAWN BY: BAM
PAGE 1 OF 2

CLIENT APPROVAL _____ DATE _____
LANDLORD APPROVAL _____ DATE _____

JOB INFO

REVISIONS:
4-24-19 bam
5-29-21 bam
06-24-21 IL
2-9-19 bam
9-18-15 bam

SCALE:
NOTED

FILE NAME:
GROCERY OUTLET
fort bragg

FILE

ELECT.

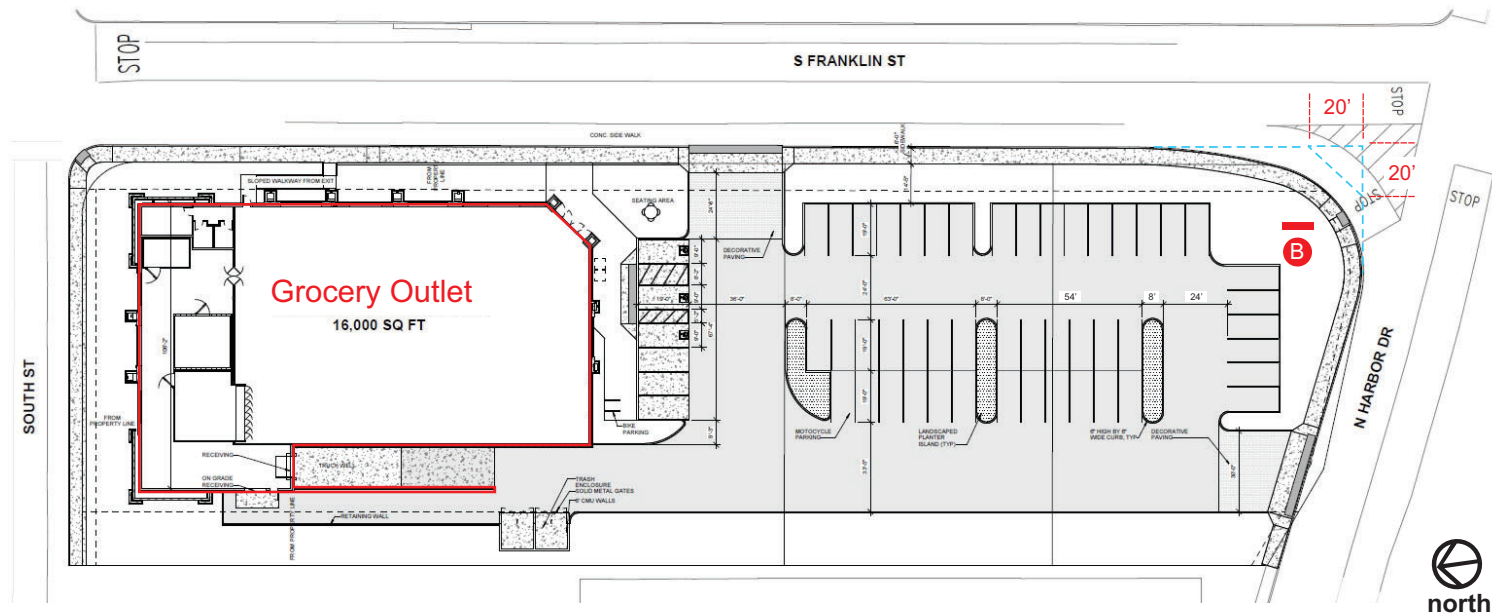
120 Volt ☐
277 Volt ☐
Other

one box above
MUST be checked
prior to any mfg.

SPECIFICATIONS

See Drawing for Specifications

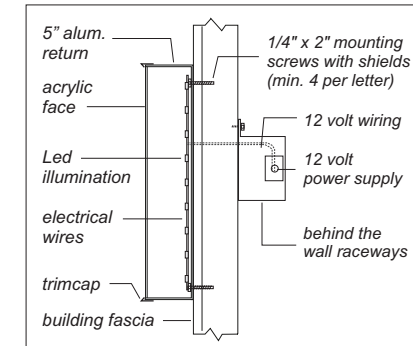
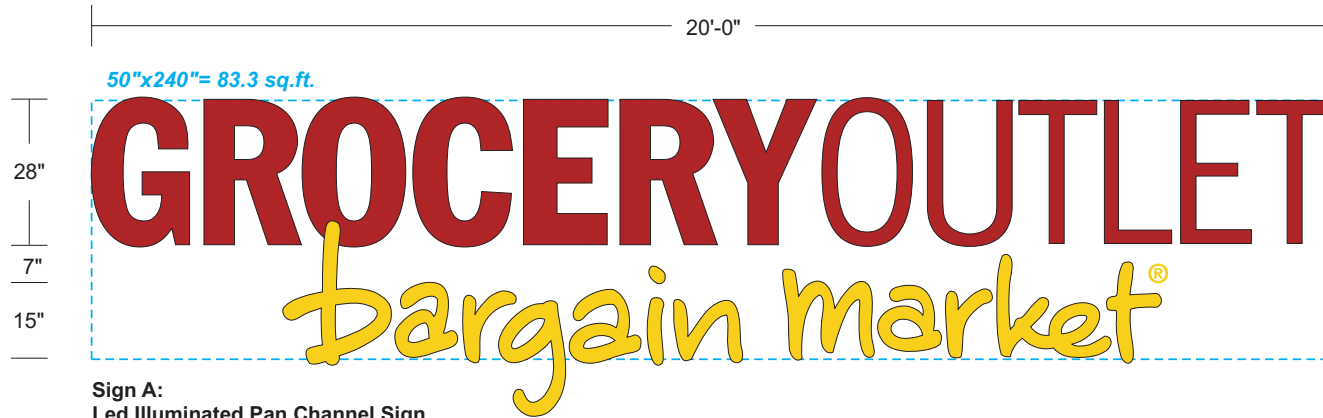
This Design Layout is specific to 120 volt electrical power for approved illuminated signage. Any other voltage at job site that requires additional install tips will be an extra charge.
Copyright 2000 USS United Sign Systems. This artwork/design is sole property of USS United Sign Systems and cannot be reproduced without written permission of Johnson Sign Systems.



SITE PLAN

- 1) This sign is intended to be installed in accordance with the requirements of Article 600 of the National Electrical Code and/or other applicable local codes.
This includes proper grounding and bonding of the sign.
- 2) The location of the disconnect switch after installation shall comply with the Sritcal 600.6 (A)(1) of the National Electrical Code

The location of the disconnect switch after installation shall comply with the Srtical 600.6 (A)(1) of the National Electrical Code				
<div><div><div><div><div><div>USS</div><div>UNITED</div></div><div>SIGN SYSTEMS</div><div>C.S.C.L. # 718965</div><div>DESIGN MANUFACTURING INSTALLATION MAINTENANCE</div></div><div><div>5201 Pentecost Drive Modesto, Calif. 95356 1-800-481-SIGN FAX (209) 543-1326</div></div></div><div><div><div>JOB #:</div><div>00000</div></div><div><div>CLIENT:</div><div>GROCERY OUTLET</div></div><div><div>CONTACT:</div><div></div></div><div><div>DATE:</div><div>3-6-19</div></div><div><div>PROJECT LOCATION:</div><div>825 S. FRANKLIN ST FORT BRAGG, CA</div></div></div><div><div><div>SALESPERSON:</div><div>SEAN CAMPBELL</div></div><div><div>DRAWN BY:</div><div>BAM</div></div><div><div>PAGE 2 OF 2</div></div><div><div>CLIENT APPROVAL</div><div>DATE</div></div><div><div>LANDLORD APPROVAL</div><div>DATE</div></div></div><div><div><div>REVISIONS:</div><div>4-24-19 bam</div></div><div><div>4-10-20 bam</div></div><div><div>6-2-21bam</div></div><div><div>7-7-15 bam</div></div><div><div>9-18-15 bam</div></div></div><div><div><div>SCALE:</div><div>NOTED</div></div><div><div>FILE NAME:</div><div>GROCERY OUTLET fort bragg</div></div></div><div><div><div>120 Volt</div><div><input type="checkbox"/></div></div><div><div>277 Volt</div><div><input type="checkbox"/></div></div><div><div>Other</div><div><input type="text"/></div></div><div><div>one box above</div><div>MUST be checked prior to any mfg.</div></div></div><div><div>See Drawing for Specifications</div><div></div></div></div></div>				
<div><div>This Design Layout is specific to 120 volt electrical power for approved illuminated signage. Any other voltage at job site that requires additional install tips will be an extra charge. Copyright 2000 USS United Sign Systems. This artwork/design is sole property of USS United Sign Systems and cannot be reproduced without written permission of Johnson Sign Systems.</div></div>				



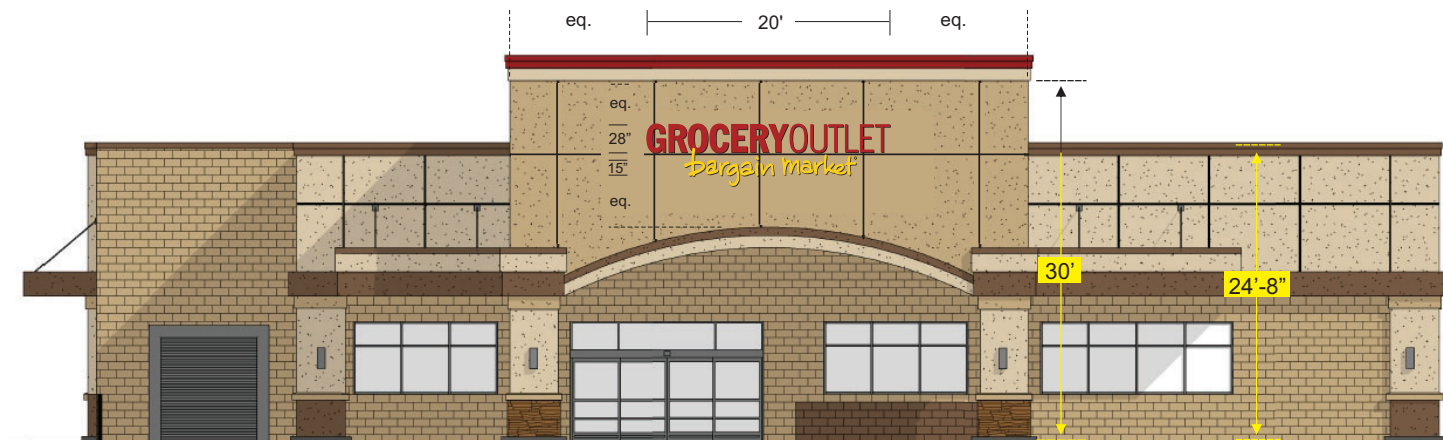
Led P/C Letter Mount Detail

Sign A:

Led Illuminated Pan Channel Sign

Scale 1/2"=1'-0"

clear acrylic letter faces with 2nd surface vinyl decoration;
white, golden yellow #3630-125. 5" deep black returns with black 1" trimcap.
ul approved white Led illumination.



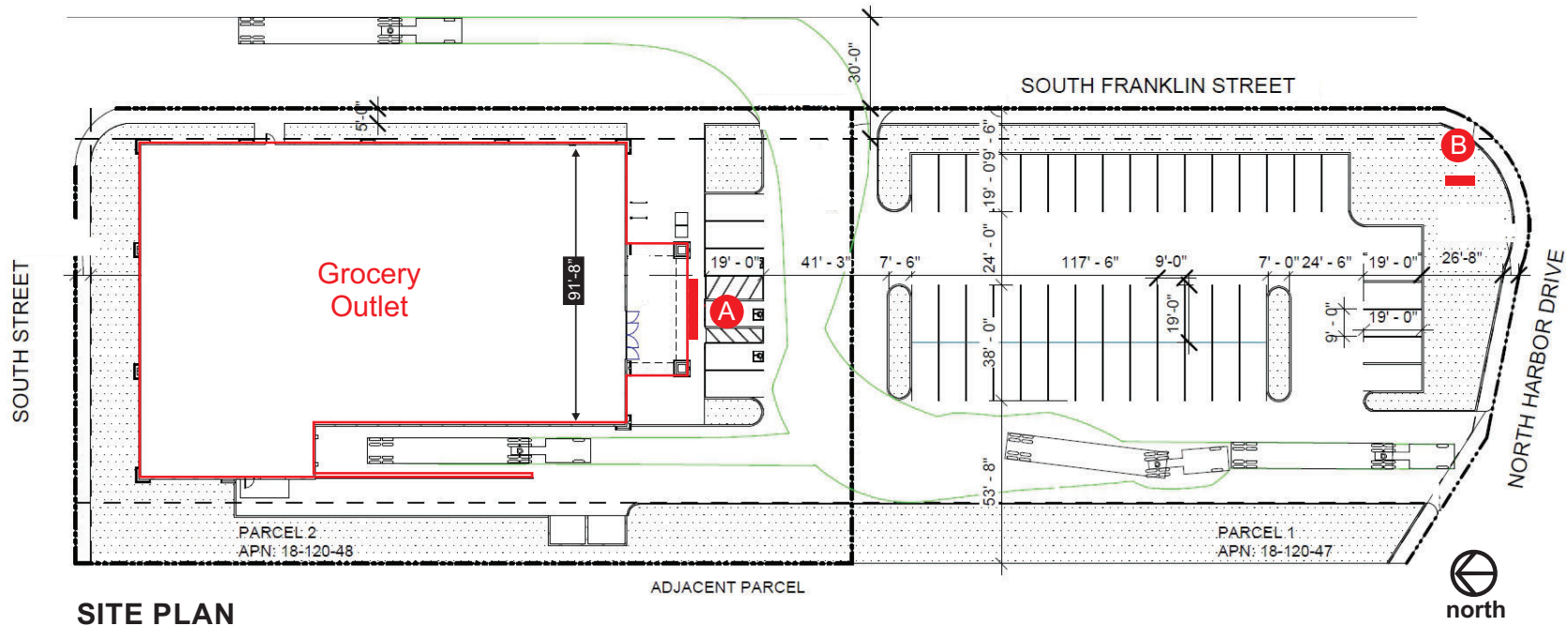
Building Front Elevation / Scale 3/32"=1'-0"

1) This sign is intended to be installed in accordance with the requirements of Article 600 of the National Electrical Code and/or other applicable local codes.

This includes proper grounding and bonding of the sign.

2) The location of the disconnect switch after installation shall comply with the Srtical 600.6 (A)(1) of the National Electrical Code

JOB INFO		FILE	ELECT.	SPECIFICATIONS		
USS UNITED SIGN SYSTEMS C.S.C.L. # 718965 DESIGN MANUFACTURING INSTALLATION MAINTENANCE	5201 Pentecost Drive Modesto, Calif. 95356 1-800-481-SIGN FAX (209) 543-1326	JOB #: 00000 CLIENT: GROCERY OUTLET CONTACT: DATE: 3-6-19 PROJECT LOCATION: 825 S. FRANKLIN ST FORT BRAGG, CA	SALESPERSON: SEAN CAMPBELL DRAWN BY: BAM PAGE 1 OF 3 CLIENT APPROVAL _____ DATE _____ LANDLORD APPROVAL _____ DATE _____	REVISIONS: 4-24-19 bam 3-15-17 bam 2-3-19 bam 2-2-19 bam 9-18-15 bam SCALE: NOTED FILE NAME: GROCERY OUTLET fort bragg	120 Volt <input type="checkbox"/> 277 Volt <input type="checkbox"/> Other <input type="text"/> one box above MUST be checked prior to any mfg.	See Drawing for Specifications <small>This Design Layout is specific to 120 volt electrical power for approved illuminated signage. Any other voltage at job site that requires additional install tips will be an extra charge. Copyright 2000 USS United Sign Systems. This artwork/design is sole property of USS United Sign Systems and cannot be reproduced without written permission of Johnson Sign Systems.</small>



SITE PLAN

- 1) This sign is intended to be installed in accordance with the requirements of Article 600 of the National Electrical Code and/or other applicable local codes.
This includes proper grounding and bonding of the sign.
- 2) The location of the disconnect switch after installation shall comply with the Srtical 600.6 (A)(1) of the National Electrical Code

		JOB INFO		FILE		ELECT.		SPECIFICATIONS			
 <p>5201 Pentecost Drive Modesto, Calif. 95356 1-800-481-SIGN FAX (209) 543-1326</p> <p>C.S.C.L. # 718965</p> <p>DESIGN MANUFACTURING INSTALLATION MAINTENANCE</p>		<p>JOB #: 00000 CLIENT: GROCERY OUTLET CONTACT: DATE: 3-6-19 PROJECT LOCATION: 825 S. FRANKLIN ST FORT BRAGG, CA</p>		<p>SALESPERSON: SEAN CAMPBELL DRAWN BY: BAM PAGE 3 OF 3</p> <p>CLIENT APPROVAL _____ DATE _____</p> <p>LANDLORD APPROVAL _____ DATE _____</p>		<p>REVISIONS: 4-24-19 bam 3-15-17 bam 2-3-19 bam 2-7-19 bam 9-18-15 bam</p> <p>SCALE: NOTED</p> <p>FILE NAME: GROCERY OUTLET fort bragg</p>		<p>120 Volt <input type="checkbox"/> 277 Volt <input type="checkbox"/> Other <input type="text"/></p> <p>one box above MUST be checked prior to any mfg.</p>		<p>See Drawing for Specifications</p> <p>This Design Layout is specific to 120 volt electrical power for approved illuminated signage. Any other voltage at job site that requires additional install tips will be an extra charge. Copyright 2000 USS United Sign Systems. This artwork/design is sole property of USS United Sign Systems and cannot be reproduced without written permission of Johnson Sign Systems.</p>	