

Sources: Esri, HERE, DeLorme, Intermap, increment P Corp., GEBCO, USGS, FAO, NPS, NRCAN, G Esri China (Hong Kong), swisstopo, MapmyIndia, © OpenStreetMap contributors, and the GIS User Cc



Round 1 Proposed High-Flow Capture Device Locations

Feature and boundary locations depicted are approximate only.

02/26/2019



Large Device- Location Inventory										
Project Phase	Drainage Basin	Inlet ID	Street Name	Pipe Depth	Pipe Diameter	Latitude	Longitude	Figure #	Additional Requirements	Distance from Bluff/wetland (ft.)
2	A	J306D	Kemppe	8.75	30"	39.43100	-123.79746	1	CDP & Priority Basin	68
1	A	J303D	Cypress	8.5	24"	39.43265	-123.79896	1	CDP & Priority Basin	200
1	B	DI313	Minnesota	7.33	18"	39.43482	-123.79331	2	CDP & Priority Basin	724
2	C	MMH51	Maple	3	20"	39.43879	-123.80591	3	Caltrans EP	80
1	C	NM45	Hazel	3.5	20"	39.43813	-123.80459	3	N/A	500
2	C	MM17	Chestnut	5.75	30"	39.43641	-123.80583	3	Caltrans EP	157
1	D	G216	Alder	6	36"	39.44299	-123.80664	4	N/A	508
1	G	MM36	Elm	6.3	24"	39.45229	-123.80963	5	CDP	955
1	G	MM37	Elm	6.17	30-42"	39.4521	-123.80946	5	CDP	955
2	*	MM50	Manzanita	5.08	18"	39.45302	-123.80571	6	Caltrans EP	100
2	H	M202M	Boatyard	3	18"	39.41977	-123.80535	7	CDP & Caltrans EP	500
2	H	M201M	Highway 20	UK	30"	39.42017	-123.80745	7	CDP & Caltrans EP	350

Coastal Development Permit (CDP)
Encroachment Permit (EP)
* No Basin in Stormdrain Master Plan
Unknown (UK)

Figure 1





Figure 2

Basin B

DI313

RIVERVIEW DRIVE

JACOBSEN LANE

MINNESOTA AVENUE

NOYO HEIGHTS DRIVE

CHESTNUT STREET

Figure 3

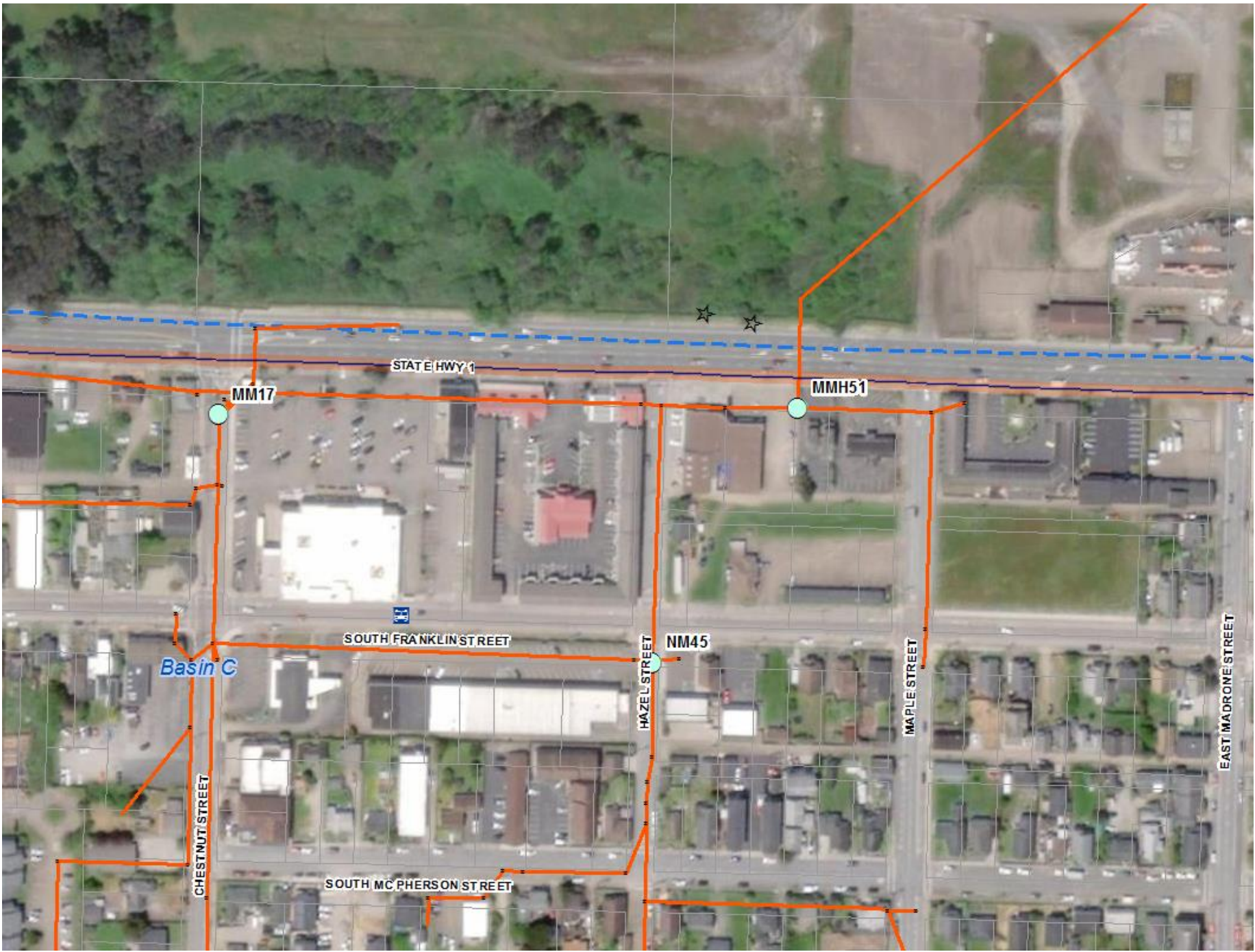


Figure 4



Figure 5

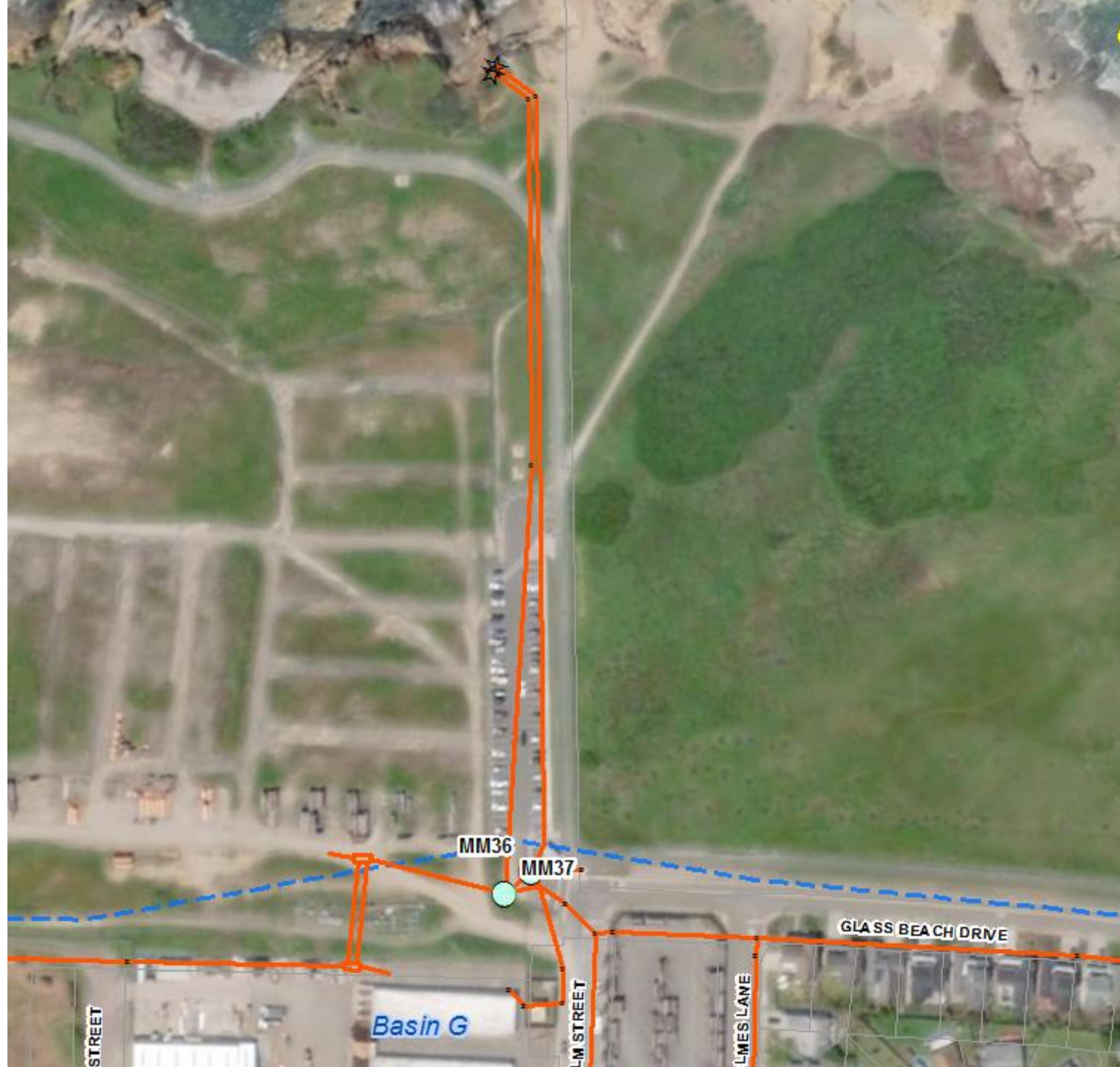


Figure 6



Figure 7

