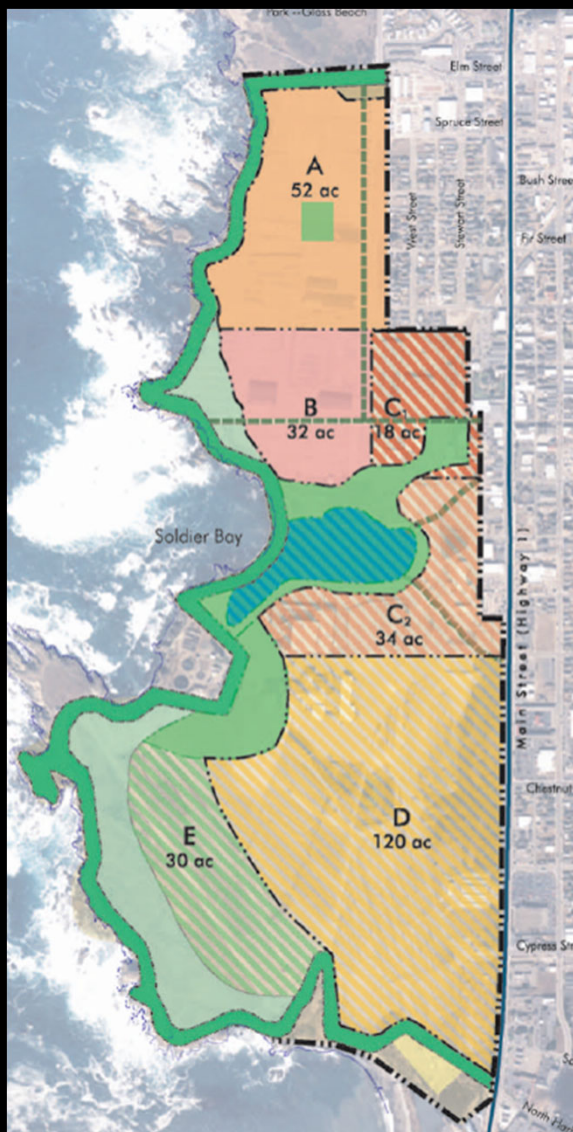
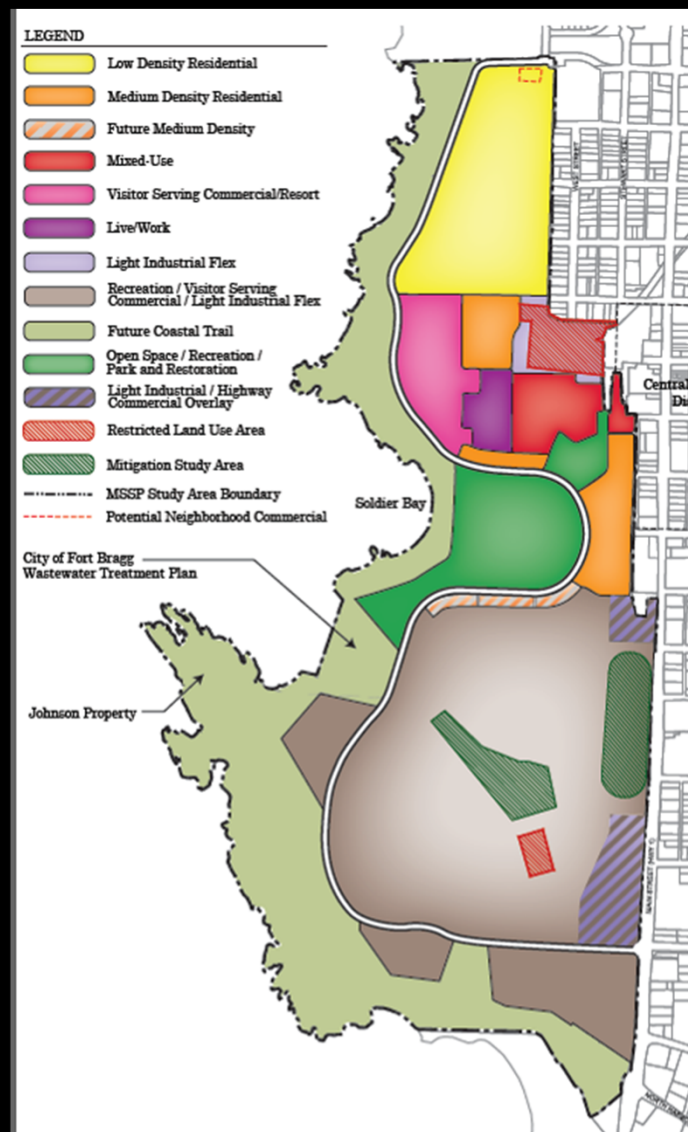


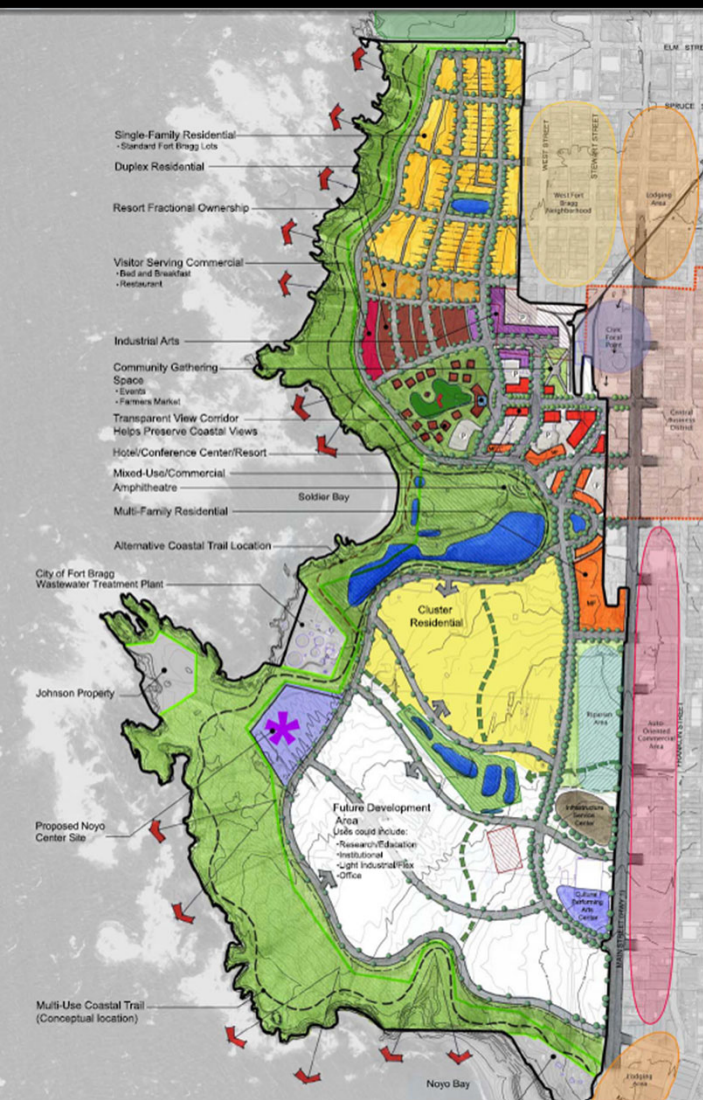
The Land Use Plan, has evolved over time, but has also illustrated the Coastal Trail, SVBP and Noyo Center Sites with the proposed zoning



2004



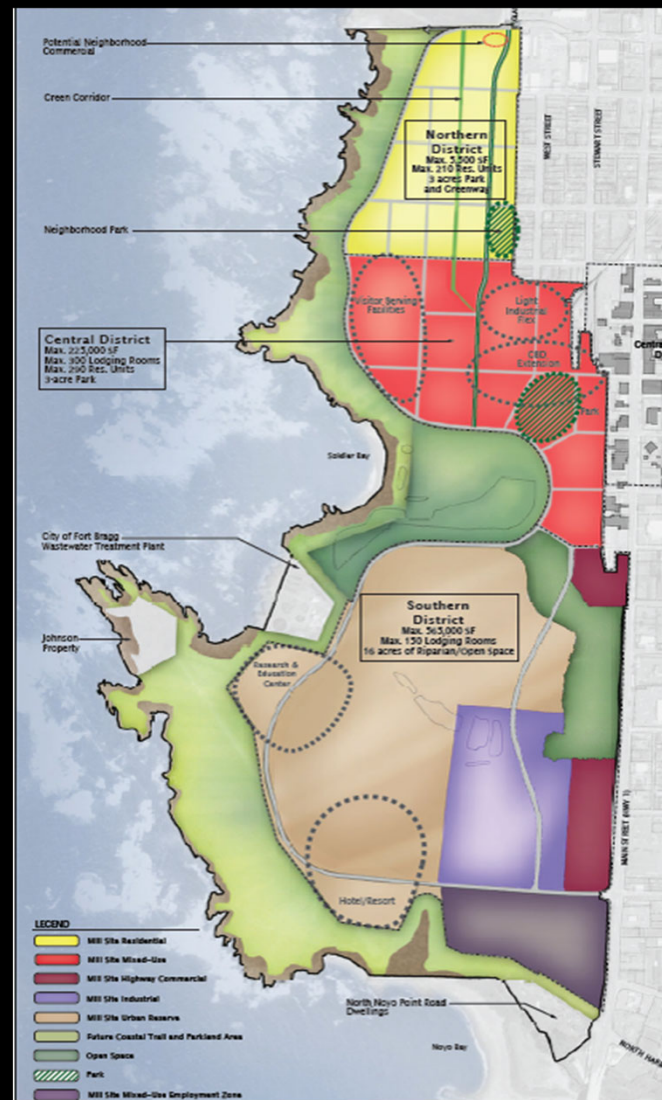
2008



2009



2009



2010

and evolved.

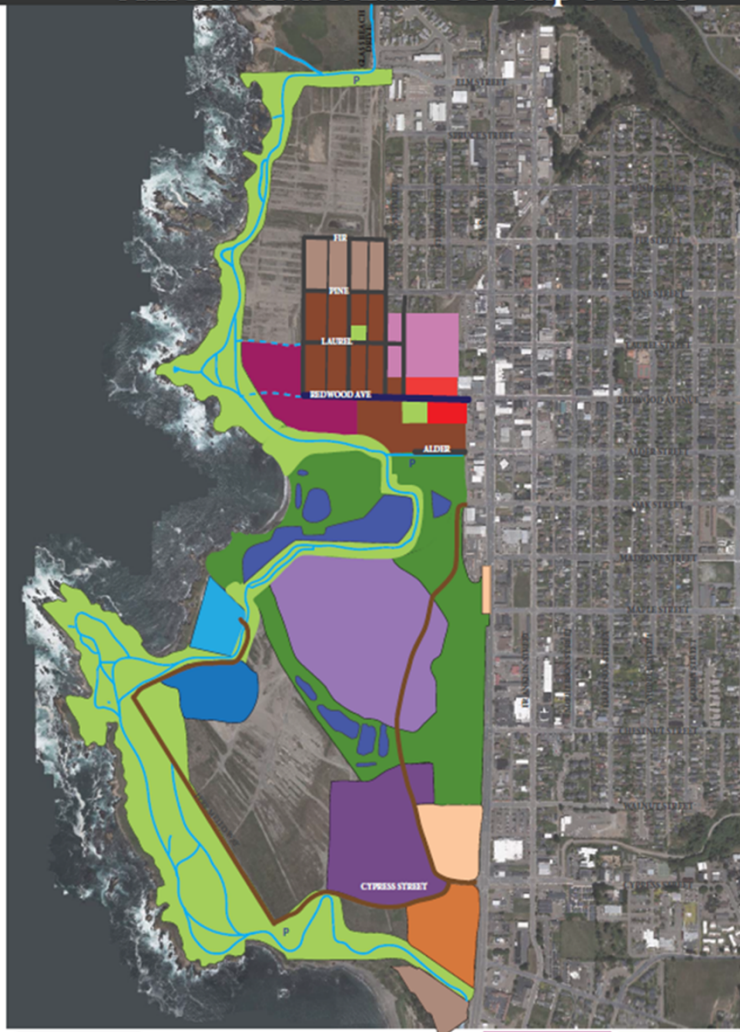


2011



2012

Mill Site Reuse: Land Use Map 6-2018



Transportation Existing Roads Multituse Trail Parking Proposed Primary Streets Residential Street Residential Alley		Low Density Residential High Density Residential Central Business District Highway Commercial	Visitor Coastal Dependent Mill Site Employment	Light Industrial Industrial Timber Resources Public Facilities	Parks Open Space Ponds Urban Reserve
--	--	--	--	---	---

2018