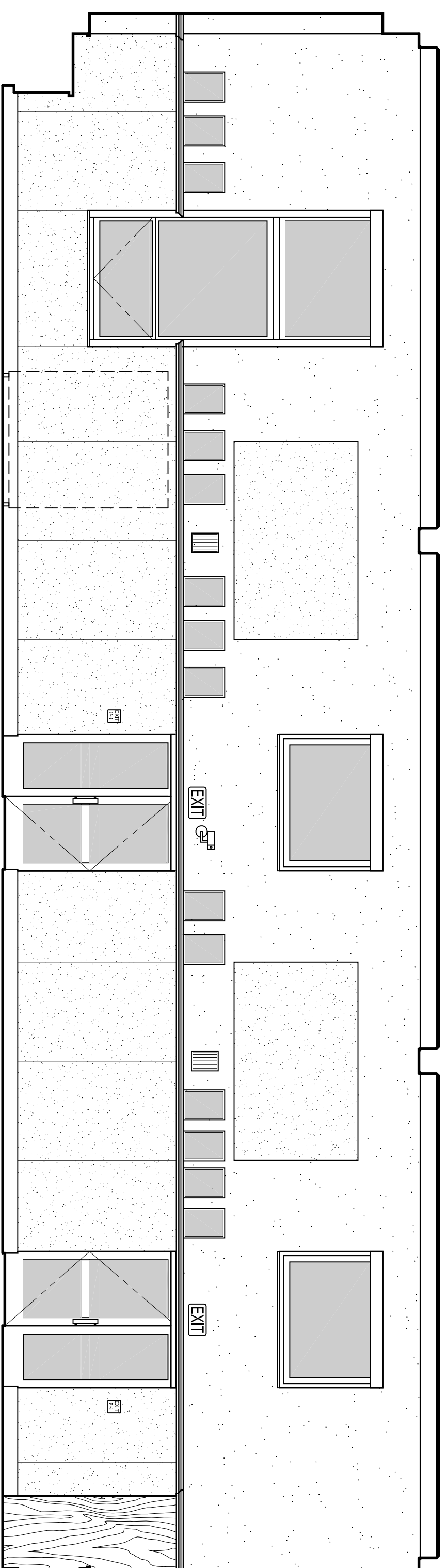
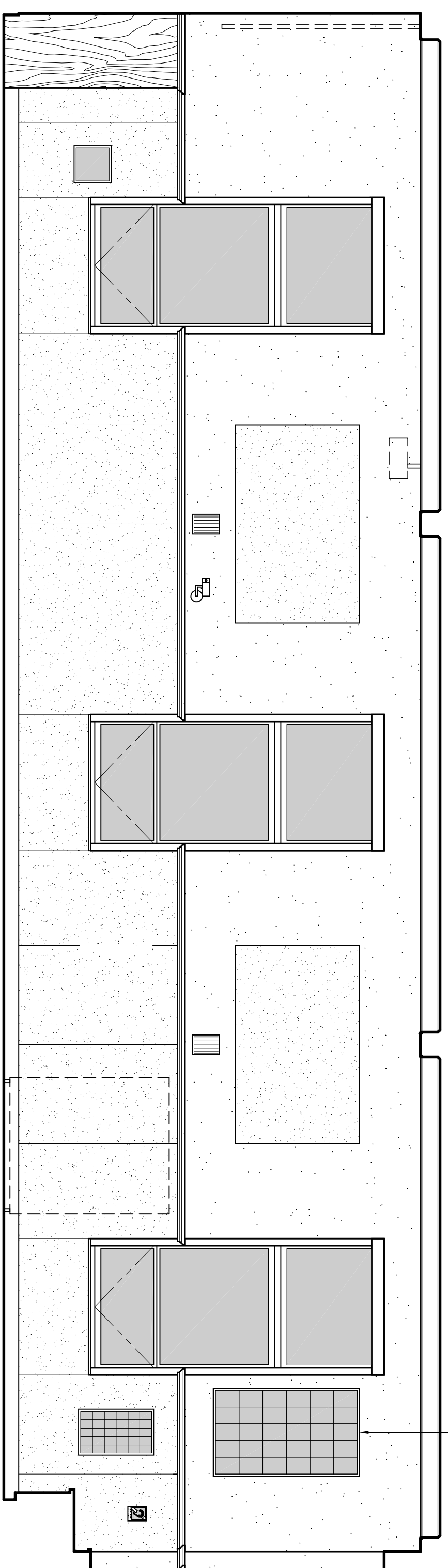


NORTH
TOWN HALL



SOUTH

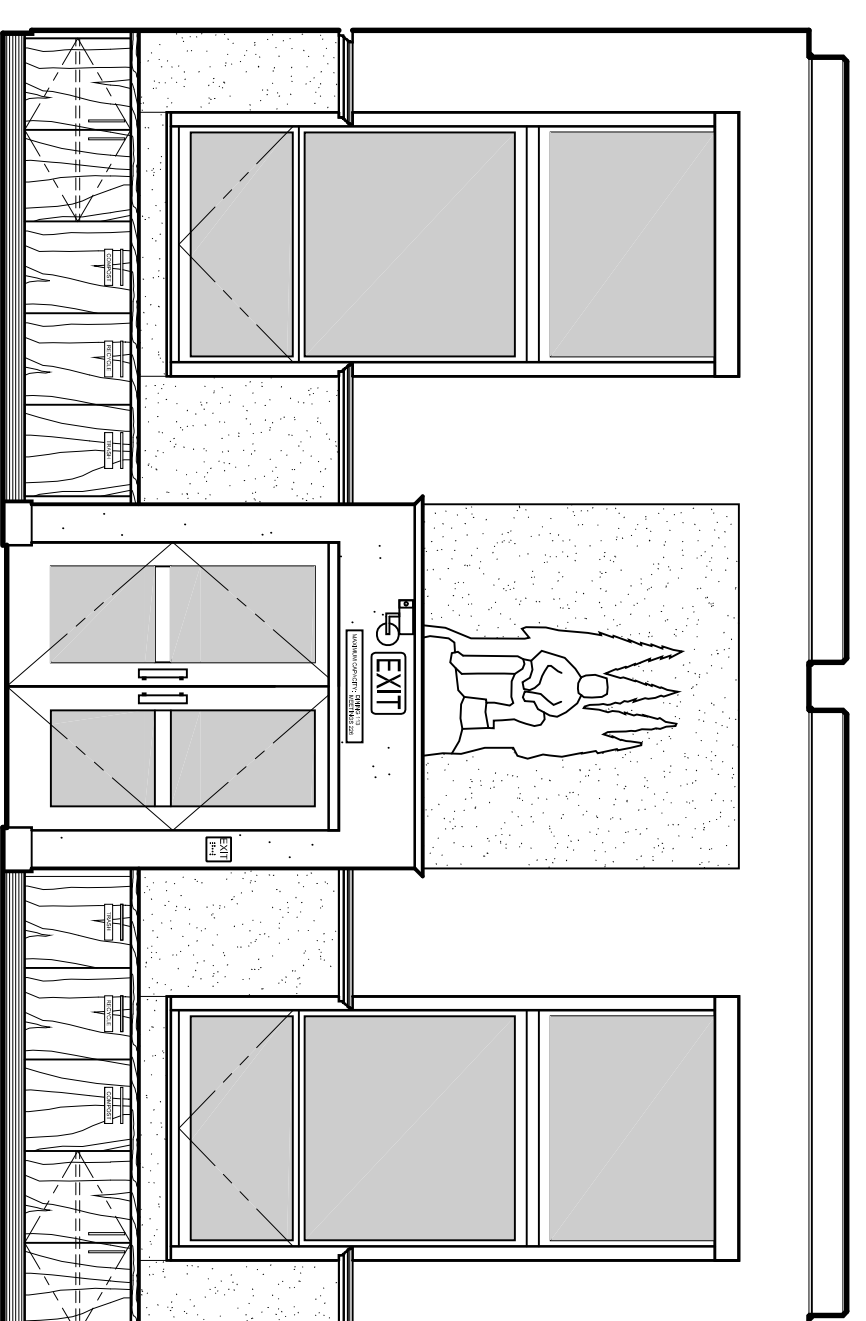
OPTION A



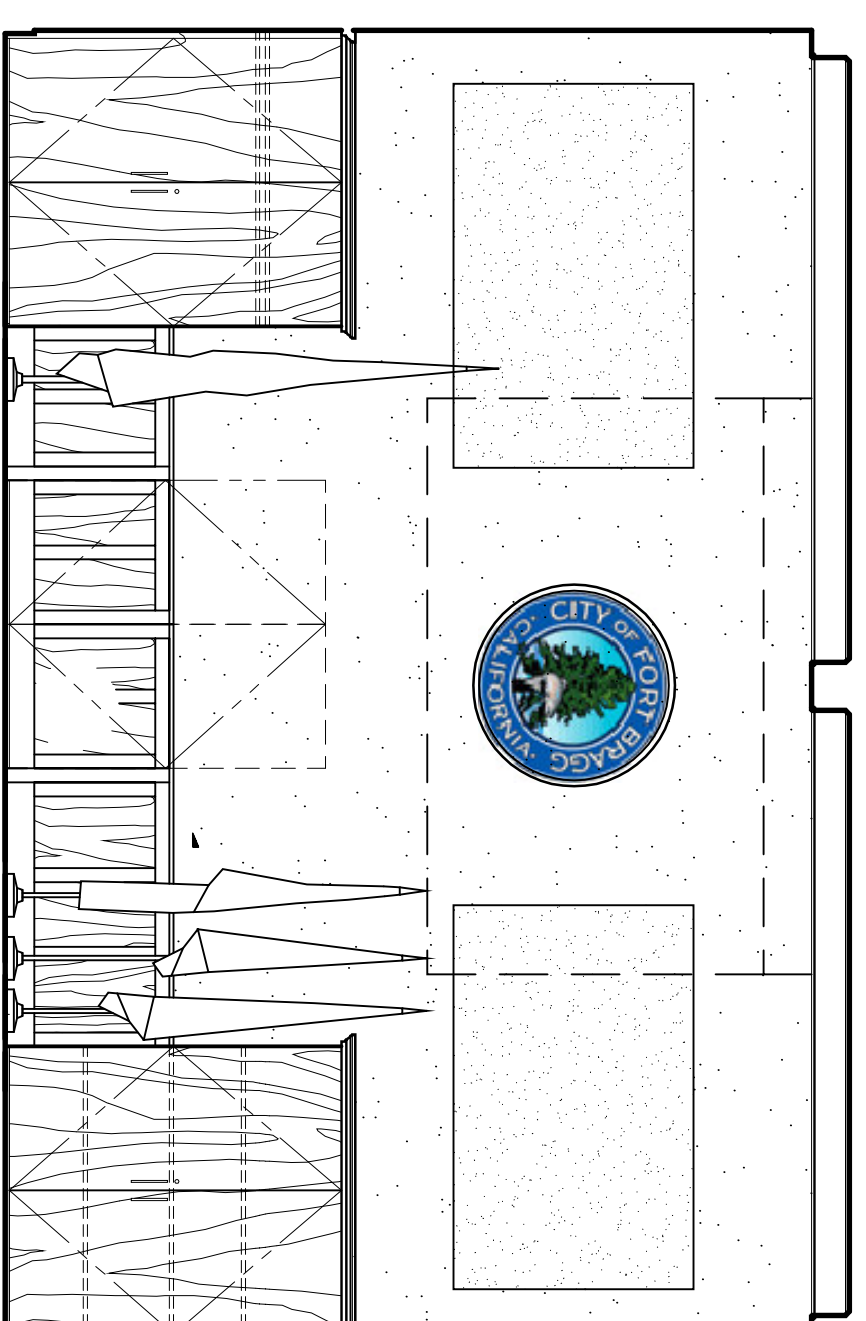
NORTH
TOWN HALL

OPTION B

MAYOR'S PHOTOS, REPHOTOGRAPHED
WITH INTERPRETIVE PANEL BELOW



EAST



WEST

TYPICAL TRIM AT OPENINGS:
 DOOR HEAD: EXISTING
 DOOR JAMB: EXISTING
 WINDOW HEAD: (E) SHEET ROCK RETURN
 WINDOW JAMB: (E) SHEET ROCK RETURN
 STOOL: (E) PAINT GRADE UNO.
 APRON: (E) PAINT GRADE UNO.
 CROWN: EXISTING
 BASE: NEW KID @ TOWN HALL,
 NONE @ OTHER ROOMS

INTERIOR ELEVATIONS

SCALE: 1/4" = 1'-0"

SCHLOSSER, NEWBERGER ARCHITECTS
 ROBERT SCHLOSSER and TODD NEWBERGER
 435 NORTH MAIN STREET • FORT BRAGG, CA 95437
 Phone (707) 961-0911 Fax (707) 961-0912
 www.landscape.com

INTERIOR
ELEVATIONS

AN INTERIOR REMODEL FOR:
 The City of Fort Bragg at:
TOWN HALL
 363 N. MAIN STREET
 FORT BRAGG, California 95437

DATE PLOTTED: JUL 27, 2014
 DRAWN BY: TN
 CHECKED BY: RS
 SCALE: AS NOTED
 SHEET: A7.1

A7.1
 OF SHEETS