

NOTES:  
 - ASSUMED ELEVATION  
 - THIS DOES NOT CONSIST  
 OF A BOUNDARY SURVEY

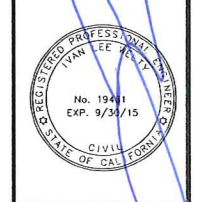
RECEIVED  
 OCT 16 2014  
 CITY OF FORT BRAGG  
 COMMUNITY DEVELOPMENT DEPT

I.L. Welty & Associates  
 703 North Main Street  
 Fort Bragg, California 95437  
 (707) 964-8865 (707) 964-5920 Fax  
 www.ilwelty.com



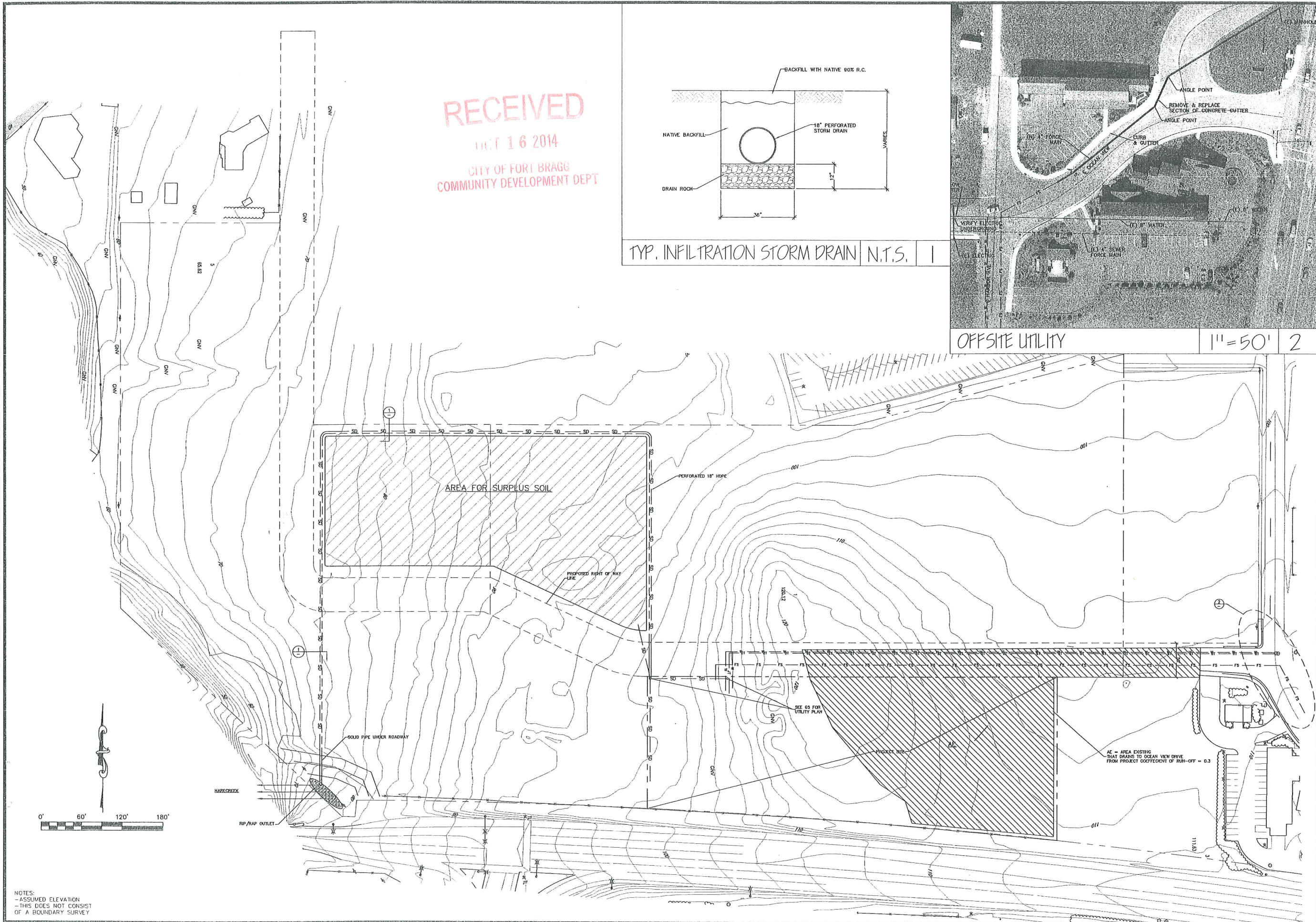
HARE CREEK TOPO MAP  
 GROUP II COMMERCIAL REAL ESTATE  
 FORT BRAGG  
 HARE CREEK CENTER

JOB #11042  
 DRAWN BY  
 DATE 10/16/2014  
 SCALE AS SHOWN  
 APPROVED  
 R.C.E. 15461



SHEET  
 G1  
 OF 5 SHEETS

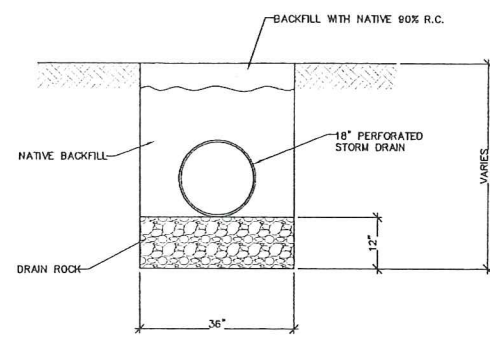




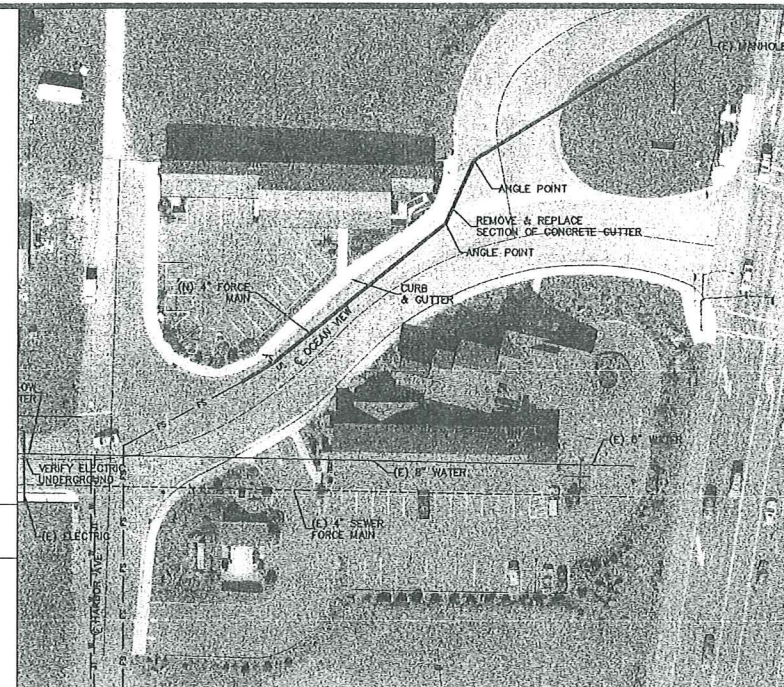
RECEIVED

MAY 16 2014

CITY OF FORT BRAGG  
COMMUNITY DEVELOPMENT DEPT



TYP. INFILTRATION STORM DRAIN N.T.S. | 1



OFFSITE UTILITY | 1" = 50' | 2



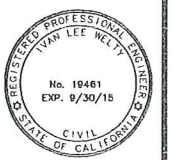
NOTES:  
- ASSUMED ELEVATION  
- THIS DOES NOT CONSIST  
OF A BOUNDARY SURVEY

I.L. Welty & Associates  
703 North Main Street  
Fort Bragg, California 95437  
(707) 964-8865 (707) 964-5920 Fax  
www.ilwelty.com



HARE CREEK OFFSITE IMPROVEMENT PLAN  
GROUP II COMMERCIAL REAL ESTATE  
FORT BRAGG  
HARE CREEK CENTER

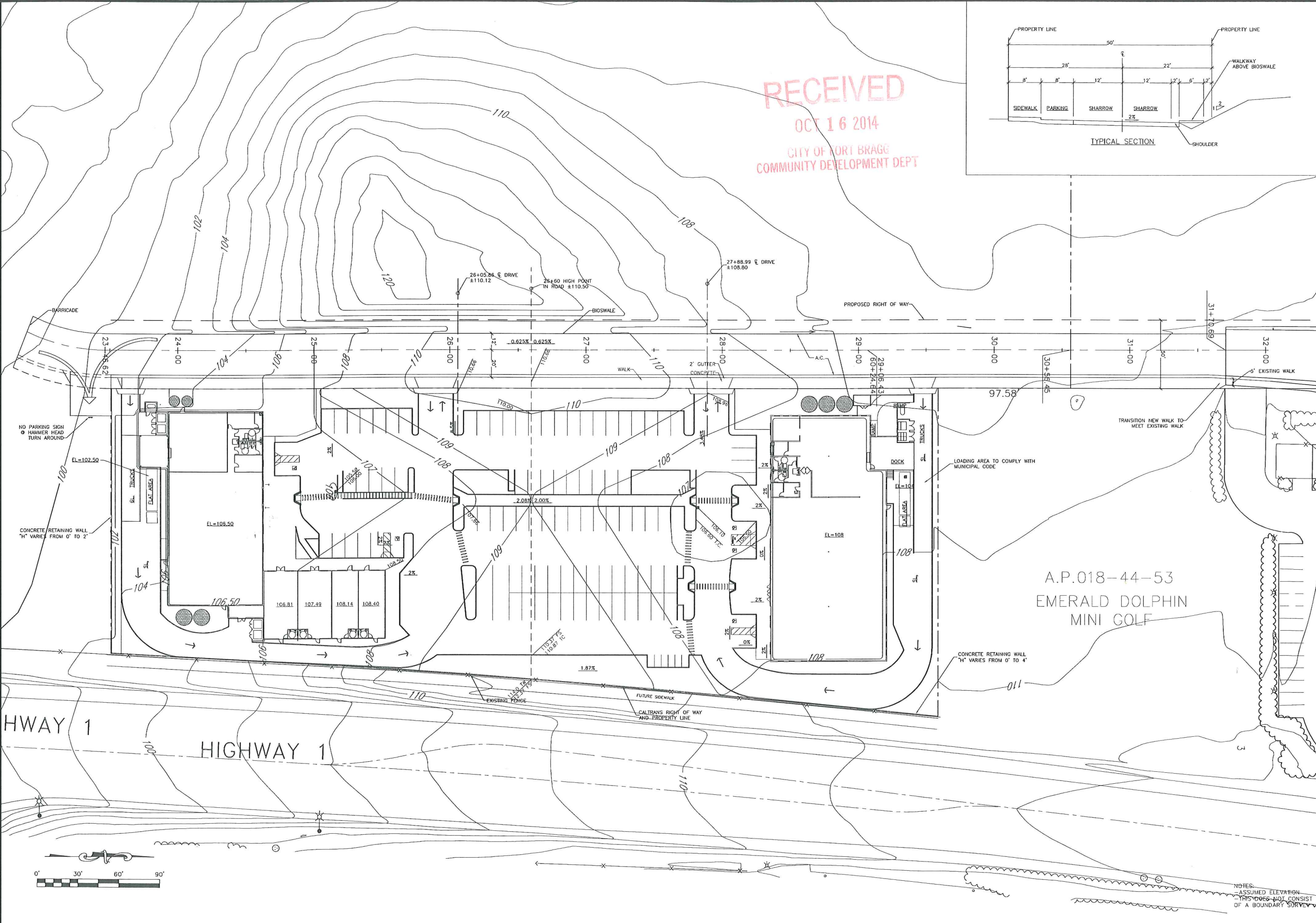
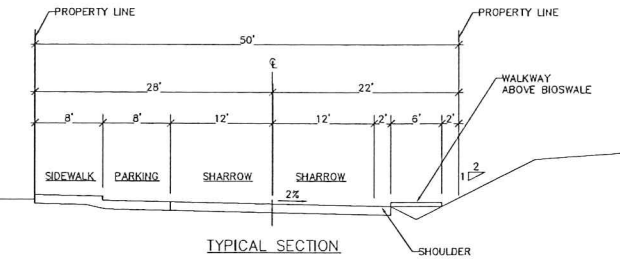
JOB #11042
DRAWN TH
DATE 10/16/2014
SCALE AS SHOWN
APPROVED
R.C.E. 19461



SHEET  
**G2**  
OF 5 SHEETS



RECEIVED  
 OCT 16 2014  
 CITY OF FORT BRAGG  
 COMMUNITY DEVELOPMENT DEPT



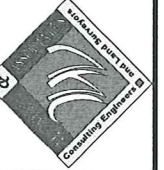
A.P.018-44-53  
 EMERALD DOLPHIN  
 MINI GOLF

HWAY 1  
 HIGHWAY 1



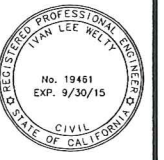
NOTES:  
 - ASSUMED ELEVATION  
 - THIS DOES NOT CONSIST  
 OF A BOUNDARY SURVEY

I.L. Welty & Associates  
 703 North Main Street  
 Fort Bragg, California 95437  
 (707) 964-8865 (707) 964-5920 Fax  
 www.ilwelty.com



HARE CREEK GRADING PLAN  
 GROUP II COMMERCIAL REAL ESTATE  
 FORT BRAGG  
 HARE CREEK CENTER

JOB #1042
DRAWN TH
DATE 10/16/2014
SCALE AS SHOWN
APPROVED
R.C.E. 19461

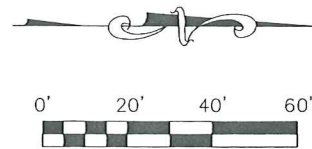


SHEET  
**G3**  
 OF 5 SHEETS

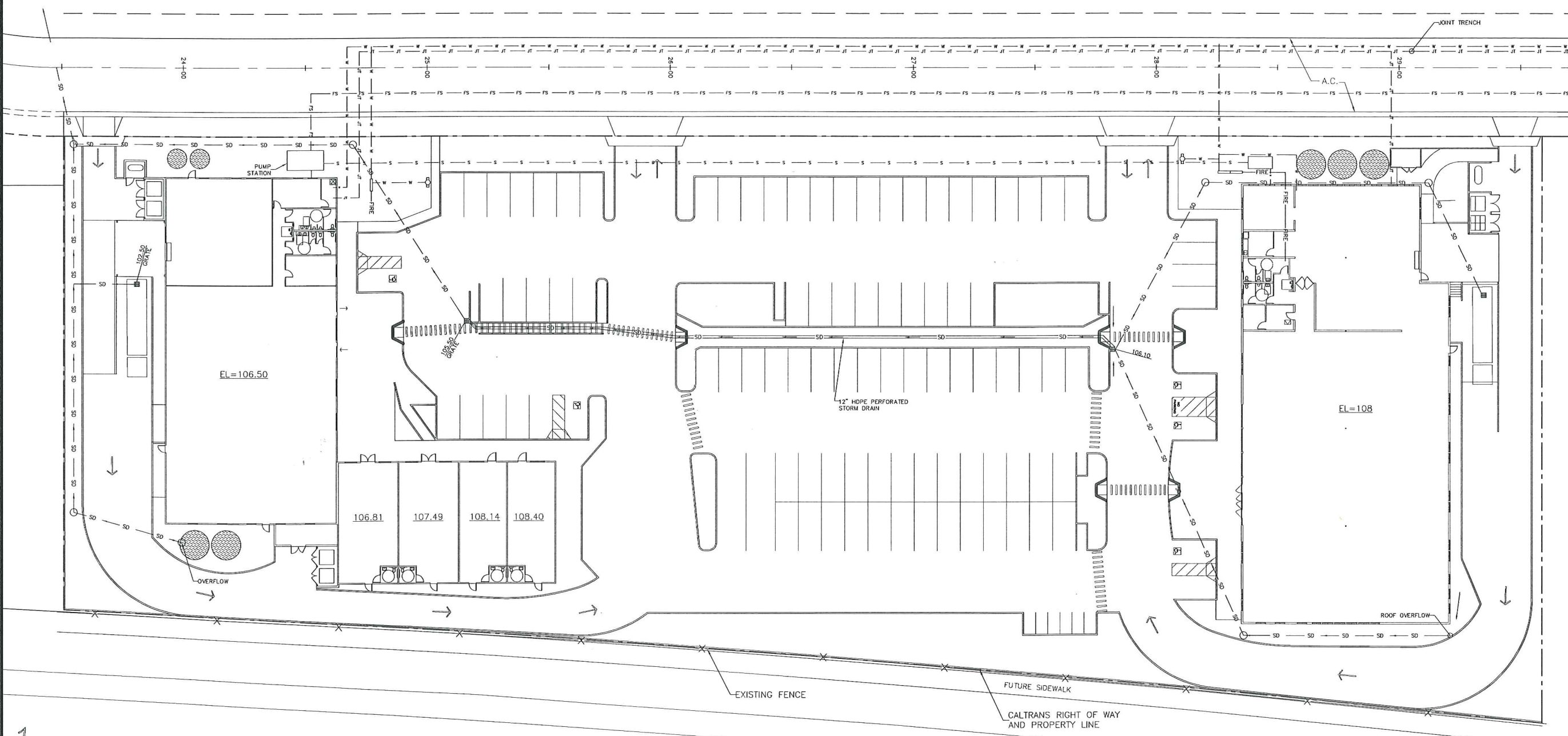


UTILITY LEGEND	
	12" HDPE PERFORATED STORM DRAIN
	12" HDPE STORM DRAIN
	FORCE SEWER LINE
	SEWER LINE
	WATER
	FIRE WATER LINE
	JOINT TRENCH

RECEIVED  
 OCT 16 2014  
 CITY OF FORT BRAGG  
 COMMUNITY DEVELOPMENT DEPT



RESIDUAL DRAINAGE TO INFILTRATION TRENCH



I.L. Welty & Associates  
 703 North Main Street  
 Fort Bragg, California 95437  
 (707) 964-8865 (707) 964-5920 Fax  
 www.ilwelty.com



HARE CREEK UTILITY PLAN  
 GROUP II COMMERCIAL REAL ESTATE  
 FORT BRAGG  
 HARE CREEK CENTER

JOB #1042	TH
DATE 10/16/2014	SCALE AS SHOWN
APPROVED	R.C.E. 19461



SHEET  
**G4**  
 OF 5 SHEETS

NOTES:  
 -ASSUMED ELEVATION  
 -THIS DOES NOT CONSIST  
 OF A BOUNDARY SURVEY

HIGHWAY 1



**STORM WATER MANAGEMENT STRATEGY**

THE STORM WATER THAT COMES IN CONTACT WITH THE PARKING LOT WHERE POSSIBLE CONTAMINATED SOIL SUCH AS OIL AND HEAVY METALS ARE DIRECTED INTO BIOSWALES AND FILTERS PRIOR TO MOVING ON. THE INITIAL RAINFALL QUANTITIES SHOWN AS THE 85TH PERCENTILE STORM IS USED TO SIZE THE TREATMENT BMP'S. THIS DESIGN PROCESS MEETS WITH THE REQUIREMENTS OF MUNICIPAL CODE SECTION 17.64.045 DEVELOPMENTS OF SPECIAL WATER QUALITY.

IN ADDITION TO WATER QUALITY, MUNICIPAL CODE SECTION 17.64.040 REQUIRES THE DEVELOPER TO MITIGATE 20% OF THE CHANGE IN RUNOFF. THE PROJECT STRATEGY FOR THE 20% RUNOFF REQUIREMENT IS AS FOLLOWS:  
 TAKE ALL RUNOFF FROM ROOFS OF ALL BUILDING AND DIRECT TO THE SEVEN TANKS THAT TOTAL 60,000 GALLON CAPACITY. DURING THE STORM, PUMP THE REMAINING RUNOFF FROM THE PARKING LOT AFTER IT HAS BEEN FILTERED INTO THE TANKS. USING A 10 YEAR STORM DESIGN AND INITIAL TIME OF CONCENTRATION OF 10 MINUTES WE CALCULATE THAT THE TANKS WILL BE FULL IN 30 MINUTES. AT THE NEW TIME OF CONCENTRATION OF 40 MINUTES THE RUNOFF HAS BEEN REDUCED IN HALF. WE HAVE DESIGNED AN INFILTRATION STORM DRAIN TRENCH THAT TOTALS 1040 L.F. WITH A 3' WIDE ROCK AREA PRIOR TO ALLOWING THE FLOW TO DRAIN TOWARD HARECREEK. THE INFILTRATION TRENCH HAS A CAPACITY OF 279 GALLONS PER MINUTE (GPM). WITH THE COMBINATION OF THE 60,000 GALLON HOLDING TANKS AND THE INFILTRATION TRENCH WE HAVE REDUCED THE FLOW TO EQUAL THE FLOW FROM THE PROPERTY PRIOR TO DEVELOPMENT AT THIS STORM FREQUENCY. WE HAVE ACCOUNTED FOR 100% OF THE DEVELOPMENT INSTEAD OF THE REQUIRED 20%.

OFFSITE DRAINAGE- PRE-CONSTRUCTION DRAINAGE THAT WAS DIRECTED TO OCEAN VIEW DRIVE TOTALED 89,183 S.F. WITH A COEFFICIENT OF RUN OFF OF 0.3. THE POST CONSTRUCTION RUNOFF FROM THE PROJECT WILL BE 20,444 S.F. WITH A COEFFICIENT OF RUNOFF OF 1.0. THERE WILL BE NO ADDITIONAL RUNOFF TOWARD OCEAN VIEW DRIVE WITH THE DEVELOPMENT.

**10 YEAR STORM VALUES  
GALLONS PER MINUTE (GPM)**

BUILDING A	370.7 GPM
BUILDING B	247.7 GPM
BUILDING C	111.3 GPM
BUILDING TOTAL =	729.7 GPM
A.C. TOTAL =	1626.9 GPM
TOTAL =	2356.6 GPM
20% =	471.2 GPM

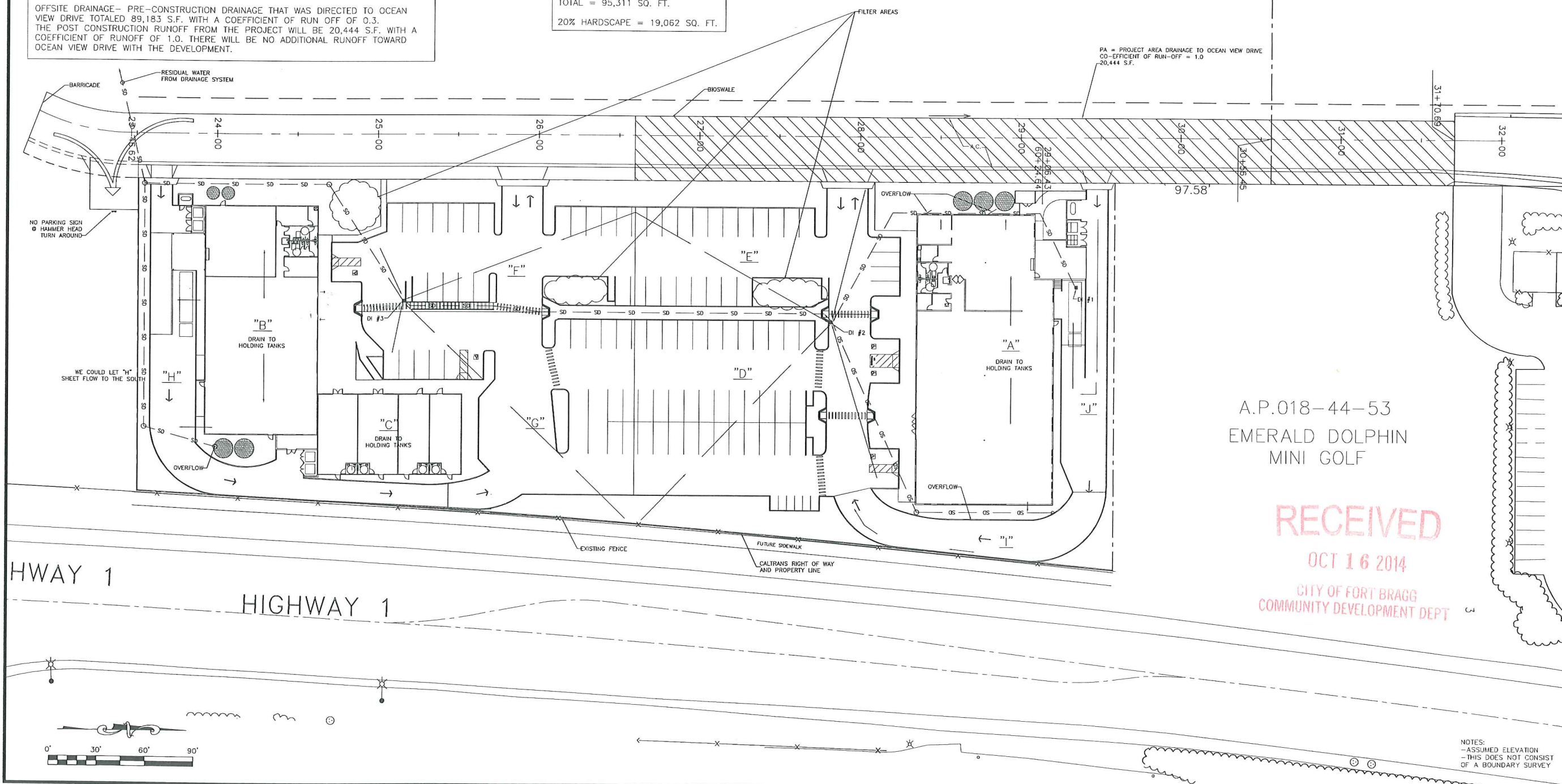
**AREAS:**

BUILDING A =	15,000 SQ. FT.
BUILDING B =	10,011 SQ. FT.
BUILDING C =	4,500 SQ. FT.
SUB TOTAL =	29,511 SQ. FT.
A.C. D =	16,889 SQ. FT.
A.C. E =	9,044 SQ. FT.
A.C. F =	10,464 SQ. FT.
A.C. G =	13,413 SQ. FT.
A.C. H =	7,388 SQ. FT.
A.C. I =	3,730 SQ. FT.
A.C. J =	4,872 SQ. FT.
TOTAL =	95,311 SQ. FT.
20% HARDSCAPE =	19,062 SQ. FT.

**85% STORM CALCULATIONS**

A.C. AREA	SIZE (S.F.)	85% VOLUME GALLONS/HR.	FILTER AREA NEEDED S.F.*
D	16,889	328.98	88.91
E	9,044	176.17	47.61
F	10,464	203.83	55.09
G	13,413	261.27	70.61
H	7,388	143.91	38.94
I	3,730	72.66	19.64
J	4,872	94.90	25.65

\*DESIGN BASED UPON 3.7 GALLONS/HR./S.F.



A.P.018-44-50  
HAHN  
40,000 SQ. FT.

A.P.018-44-53  
EMERALD DOLPHIN  
MINI GOLF

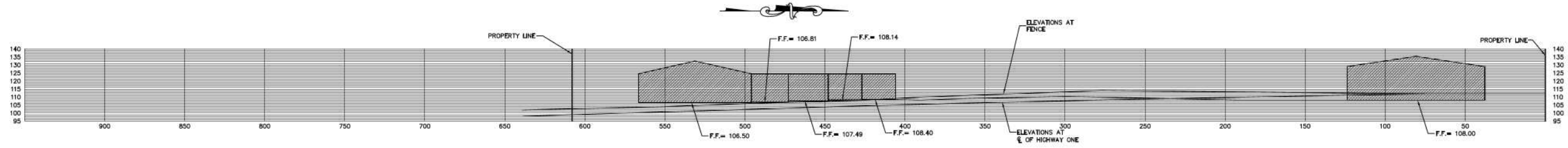
**RECEIVED**  
OCT 16 2014  
CITY OF FORT BRAGG  
COMMUNITY DEVELOPMENT DEPT

**I.L. Welty & Associates**  
703 North Main Street  
Fort Bragg, California 95437  
(707) 964-8865 (707) 964-5920 Fax  
www.ilwelty.com

HARE CREEK DRAINAGE AREAS  
GROUP II COMMERCIAL REAL ESTATE  
FORT BRAGG  
HARE CREEK CENTER

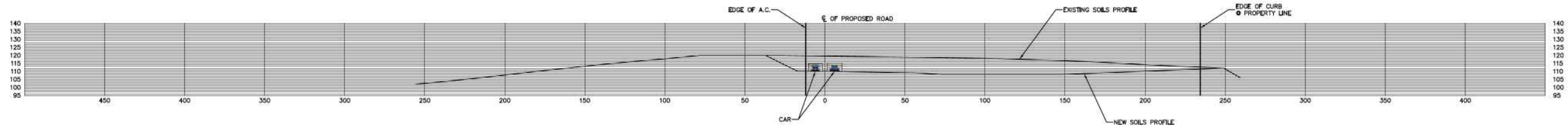
JOB #11042  
DRAWN TH  
DATE 10/16/2014  
SCALE AS SHOWN  
APPROVED  
R.C.E. 19461

NOTES:  
-ASSUMED ELEVATION  
-THIS DOES NOT CONSIST  
OF A BOUNDARY SURVEY



PROFILE LOOKING WEST FROM HIGHWAY ONE

1:30 | 1



SECTION @ STATION 25+77.23

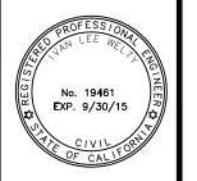
1:30 | 1

I.L. Welty & Associates  
 703 North Main Street  
 Fort Bragg, California 95437  
 (707) 964-8865 (707) 964-5920 Fax  
 www.ilwelty.com



HARE CREEK DEVELOPMENT  
 GROUP II COMMERCIAL REAL ESTATE  
 FORT BRAGG  
 HARE CREEK CENTER

JOB #11042  
 DRAWN TH  
 DATE 1/20/2015  
 SCALE AS SHOWN  
 APPROVED  
 P.C.E. 19461



SHEET  
 G6  
 OF 6 SHEETS