



BAINBRIDGE PARK PLAN

DESIGN DEVELOPMENT

PREPARED FOR THE CITY OF FORT BRAGG

APRIL 2024





PROJECT ROAD MAP

PROJECT KICKOFF

DESIGN DEVELOPMENT WITH CITY

PUBLIC WORKSHOP

CPTED REVIEW WITH FORT BRAGG PD

BAINBRIDGE PARK PLAN

BAINBRIDGE PARK PLAN

BAINBRIDGE PARK





BAINBRIDGE PARK

AERIAL VIEW OF PARK



PARK SCENES

BAINBRIDGE PARK





BAINBRIDGE PARK

PARK SCENES



**WIGGLY GIGGLY PLAYGROUND
ENLARGED PLAN**





BAINBRIDGE PARK

WIGGLY GIGGLY ENLARGED PLAN

SEA URCHIN CLIMBER DOMES

KELP FOREST RUBBER DESIGN

EXISTING RESTROOM

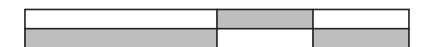


PRESERVE EXISTING FENCE

SHADED SEATING AREA - WRAP-AROUND BENCH TO MATCH EXISTING SEATING

TIDE POOL RUBBER DESIGN

0 20 40



SCALE: 1" = 20'



WIGGLY GIGGLY ENLARGED PLAN

BAINBRIDGE PARK



**PICNIC AREA
ENLARGED PAN**



PICNIC AREA ENLARGED PLAN

BAINBRIDGE PARK



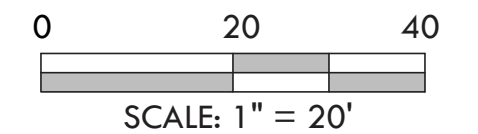
PATIO AREA

ICON PICNIC SHELTER

DECORATIVE VERTICAL
LANDSCAPE LOGS

DECORATIVE LANDSCAPE
BOULDERS

DECORATIVE HORIZONTAL
LANDSCAPE LOGS



RESTROOM UPGRADES





Existing Conditions



Recommended Updates



Power wash and clean all vertical and horizontal surfaces and finish floors with epoxy floor coating



Stainless steel sink



Stainless steel toilet



Three roll toilet paper dispenser with lock



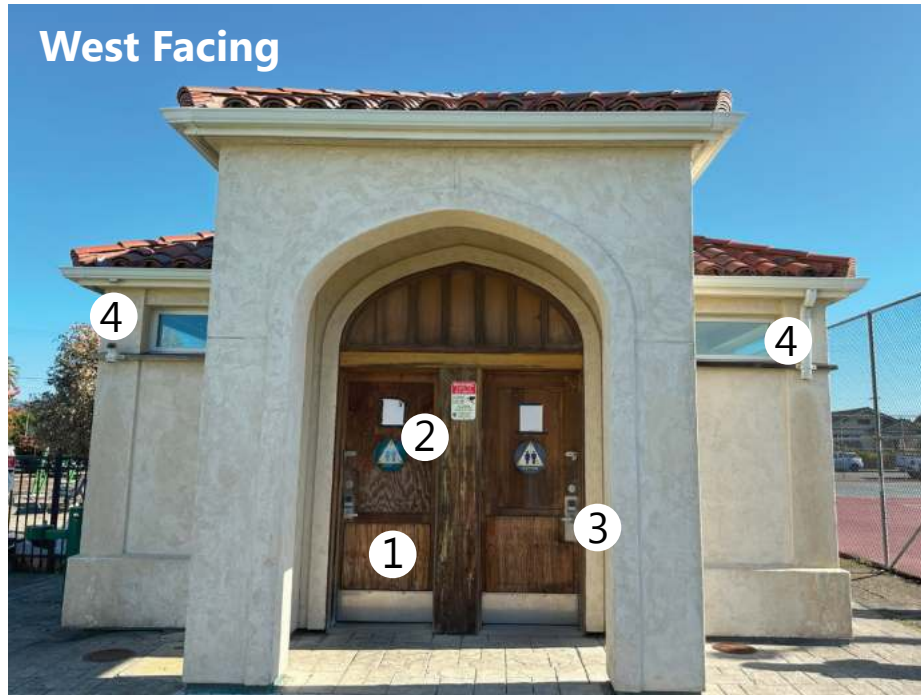
Stainless steel baby changing station

***Replace all porcelain with stainless steel**



BAINBRIDGE PARK

EXTERIOR UPGRADES



- Recommended Updates**
- 1. Metal frame and door with kick-plate
 - 2. Metal gender sign
 - 3. Updated locking mechanism
 - 4. New downspout alternative



- Recommended Updates**
- 1. New lighting
 - 2. Mural opportunity



- Recommended Updates**
- 1. Metal frame and door with kick plate
 - 2. Metal gender sign
 - 3. Updated locking mechanism
 - 4. New downspout alternative



- Recommended Updates**
- 1. Metal frame and door with kick-plate
 - 2. New lighting

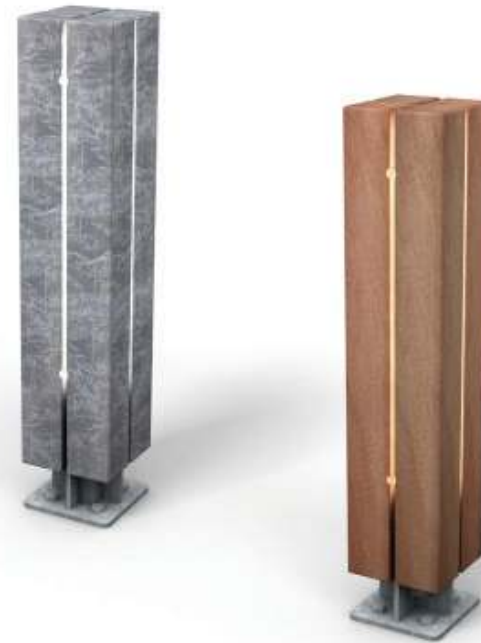
VISION FOR SITE FEATURES





BAINBRIDGE PARK

VISION FOR SITE FEATURES



VISION FOR SITE FEATURES

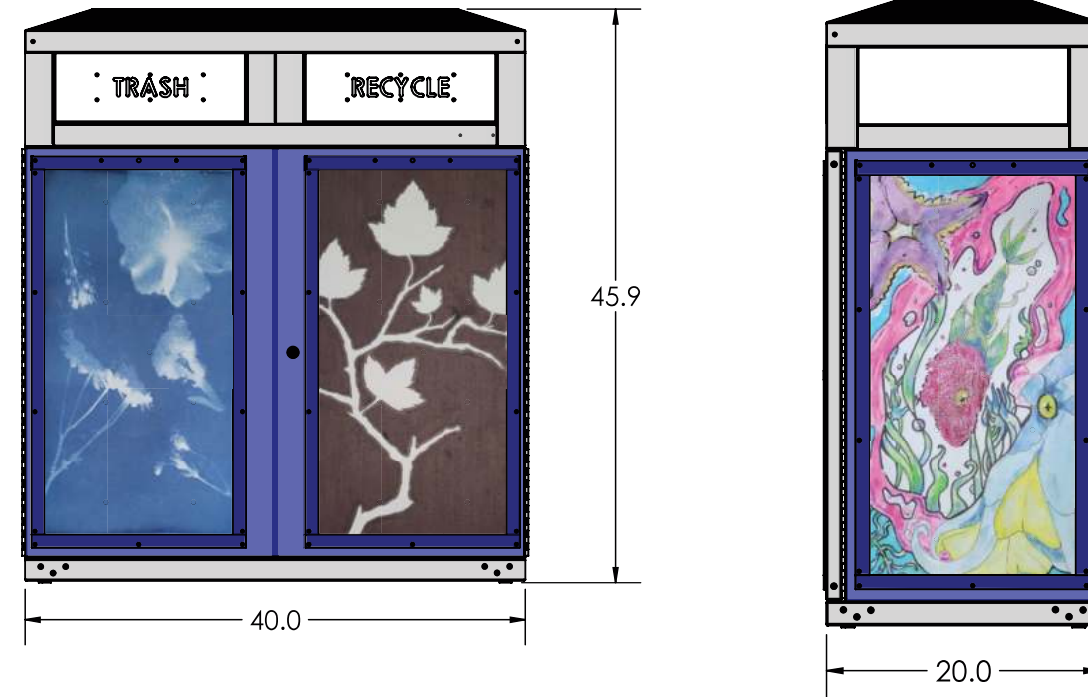
BAINBRIDGE PARK





BAINBRIDGE PARK

VISION FOR SITE FEATURES



PLANT PALETTE





BAINBRIDGE PARK

TREES/ LARGE SHRUBS

FORT BRAGG USDA ZONE 9B

25° F to 30° F / -3.9°C to -1.1°C

A hardiness zone is a geographic area with specific conditions relevant to plant growth and survival. It typically refers to the minimum temperatures that a plant can tolerate. So a plant labeled zone 9b hardy would mean that variety can handle minimum temperatures of 25 – 30° F.

(E) = EVERGREEN

(D) = DECIDUOUS

(N) = CALIFORNIA NATIVE

(A) = ADAPTED TO THE LOCAL CLIMATE



NEW ZEALAND CHRISTMAS TREE | METROSIDEROS EXCELSA
(A, E) | 20-30 ft tall 10-15 ft wide



SANTA CRUZ ISLAND IRONWOOD | LYONOTHAMNUS FLORIBUNDUS SSP. ASPLENIFOLIUS
(N, A, E) | 20-30 ft tall 15-20 ft wide



PACIFIC WAX MYRTLE | MYRICA CALIFORNICA
(E, N, A) | 20-30 ft tall 10-20 ft wide



SILK TASSEL BUSH | GARRYA ELLIPTICA
(E, A, N) | 6-15 ft tall 6-10 ft wide



PINK MELALEUCA | MELALEUCA NESOPHILA
(E, A) | 15-30 ft tall 15-30 ft wide

SHRUBS

BAINBRIDGE PARK



LITTLE SUR MANZANITA |
ARCTOSTAPHYLOS EDMUNDSII 'CARMEL SUR'
(E, N, A) | 0.25-4 ft tall 3-12 ft wide



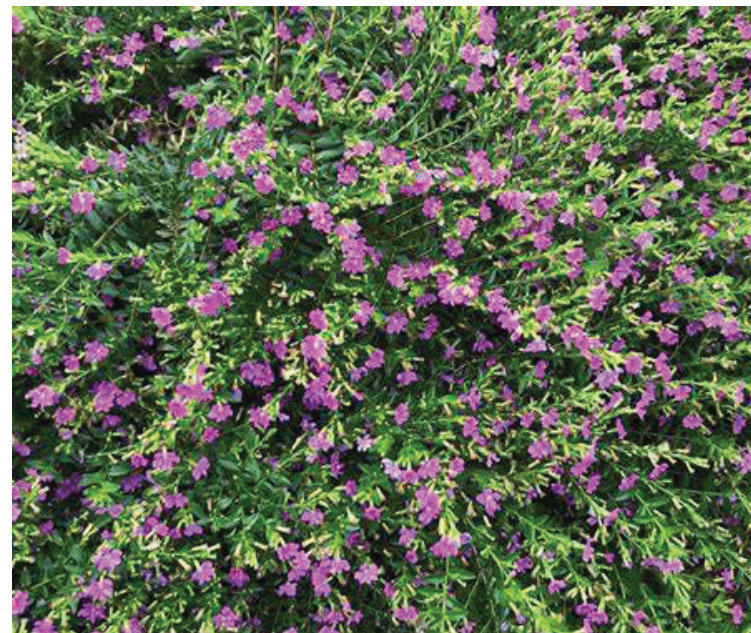
BERBERIS THUNBERGII 'ROSE GLOW' |
ROSE GLOW JAPANESE BARBERRY
(A, D) | 4-5 ft tall 3-4 ft wide



HEATHER | CALLUNA VULGARIS
(E) | 1-2 ft tall 1-3 ft wide



SAGELEAF ROCKROSE | CISTUS SALVIIFOLIUS
(E, A) | 1-2 ft tall 6-8 ft wide



FALSE HEATHER | CUPHEA HYSSOPIFOLIA
(E, A) | 1-2 ft tall 0.75-2.5 ft wide



CALIFORNIA LILAC | CEANOTHUS
(D, N) | 4-8 ft tall 6-12 ft wide



BAINBRIDGE PARK

SHRUBS



TEA TREE | LEPTOSPERMUM SCOPARIUM
(E) | 6-10 ft tall 6-10 ft wide



PACIFIC WAX MYRTLE | MYRICA CALIFORNICA
(E, N, A) | 20-30 ft tall 10-20 ft wide



MEXICAN BUSH SAGE | SALVIA LEUCANTHA
(E, A) | 4-6 ft tall 4-6 ft wide



MEXICAN MARIGOLD | TAGETES LEMMONII
(E, A) | 4-6 ft tall 6-8 ft wide



EVE CASE COFFEEBERRY |
FRANGULA CALIFORNICA 'EVE CASE'
(E, N, A) | 3-6 ft tall 4-6 ft wide



CARPET MANZANITA | ARCTOSTAPHYLOS 'EMERALD CARPET'
(N, A, E) | .5-1 ft tall 3-5 ft wide

GRASSES/SEDGES

BAINBRIDGE PARK



CLUSTERED FIELD SEDGE | CAREX PRAEGRACILIS
(E, N) | 2-3 ft tall 2-3 ft wide



NEW ZEALAND SEDGE | CAREX TESTACEA
(A, E) | 1-2 ft tall 1-2 ft wide



GRAY RUSH | JUNCUS PATENS
(N, E, A) | 1-2 ft tall 1-2 ft wide



KARL FOERSTER FEATHER GRASS | CALAMAGROSTIS ACUTIFLORA
(A) | 3-6 ft tall 1-2 ft wide



GIANT WILDRYE | ELYMUS CONDENSATUS 'CANYON PRINCE'
(N, A, E) | 3-6 ft tall 2-8 ft wide



BLUE OAT GRASS | HEUCTOTRICHON SEMPERVIRENS
(E, A) | 2-5 ft tall 1-2 ft wide



BAINBRIDGE PARK

SHRUBS



TORCH ALOE | ALOE ARBORESCENS
(E) | 6-8 ft tall 6-8 ft wide



SAND HILL SAGE | ARTEMISIA PYCNOCEPHALA
(E, N, A) | 1-2 ft tall 2-3 ft wide

SCHEDULE





SCHEDULE

**DESIGN DEVELOPMENT/CONSTRUCTION
DOCUMENT PROCESS
FEBRUARY - JUNE 2024**

**CONSTRUCTION BEGINS
AUGUST 2024**

**GRAND OPENING
SPRING 2025**