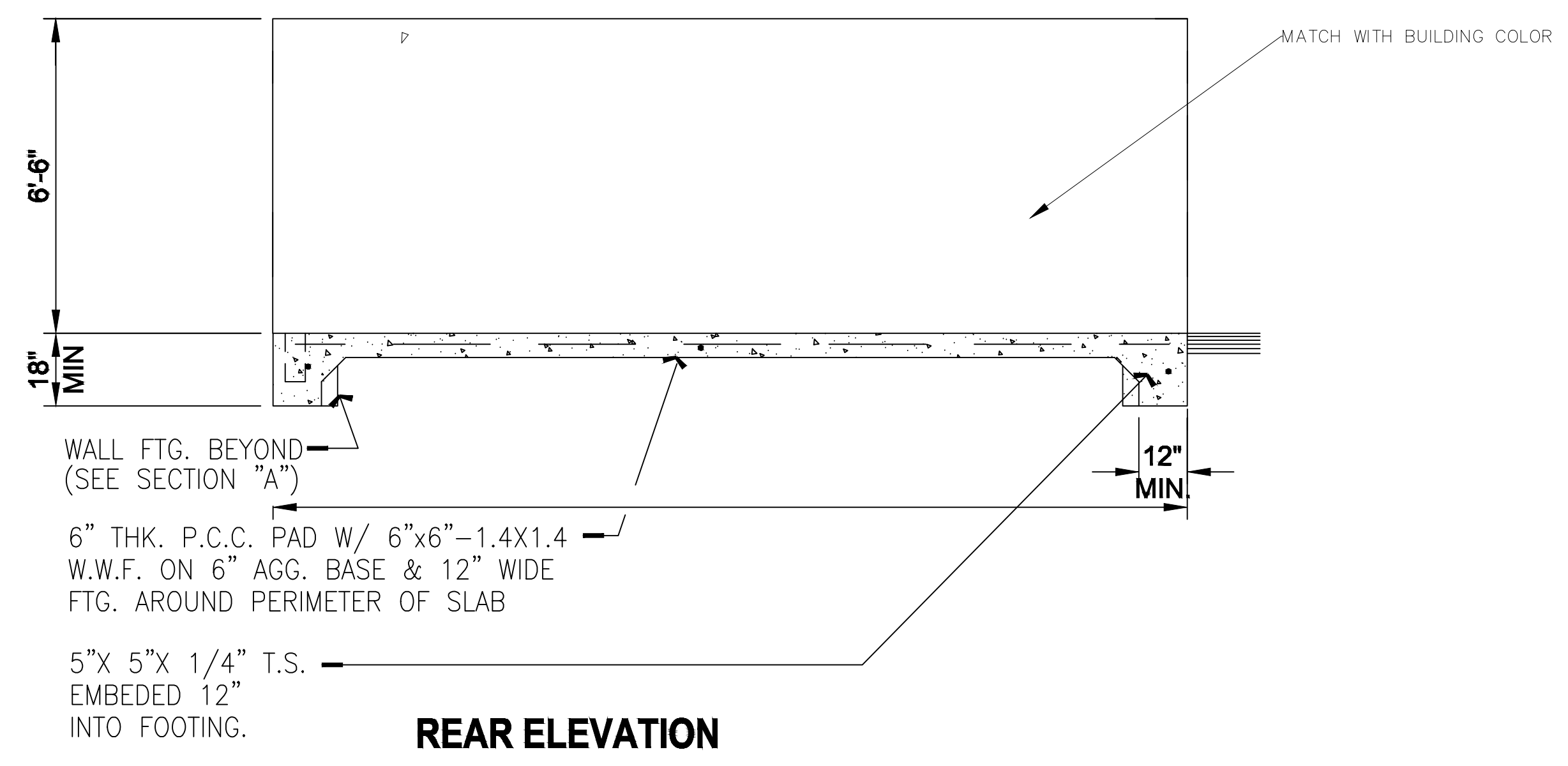
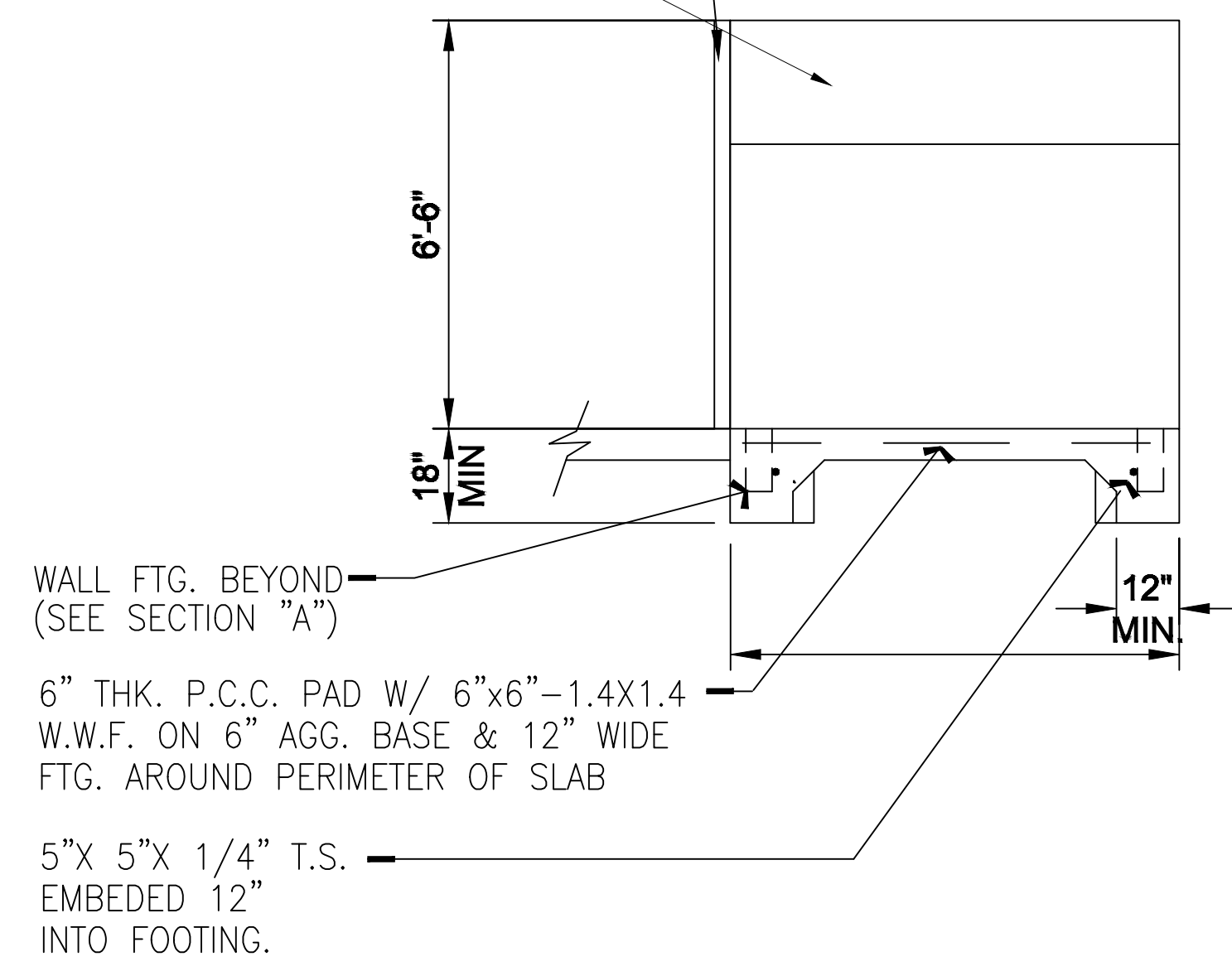
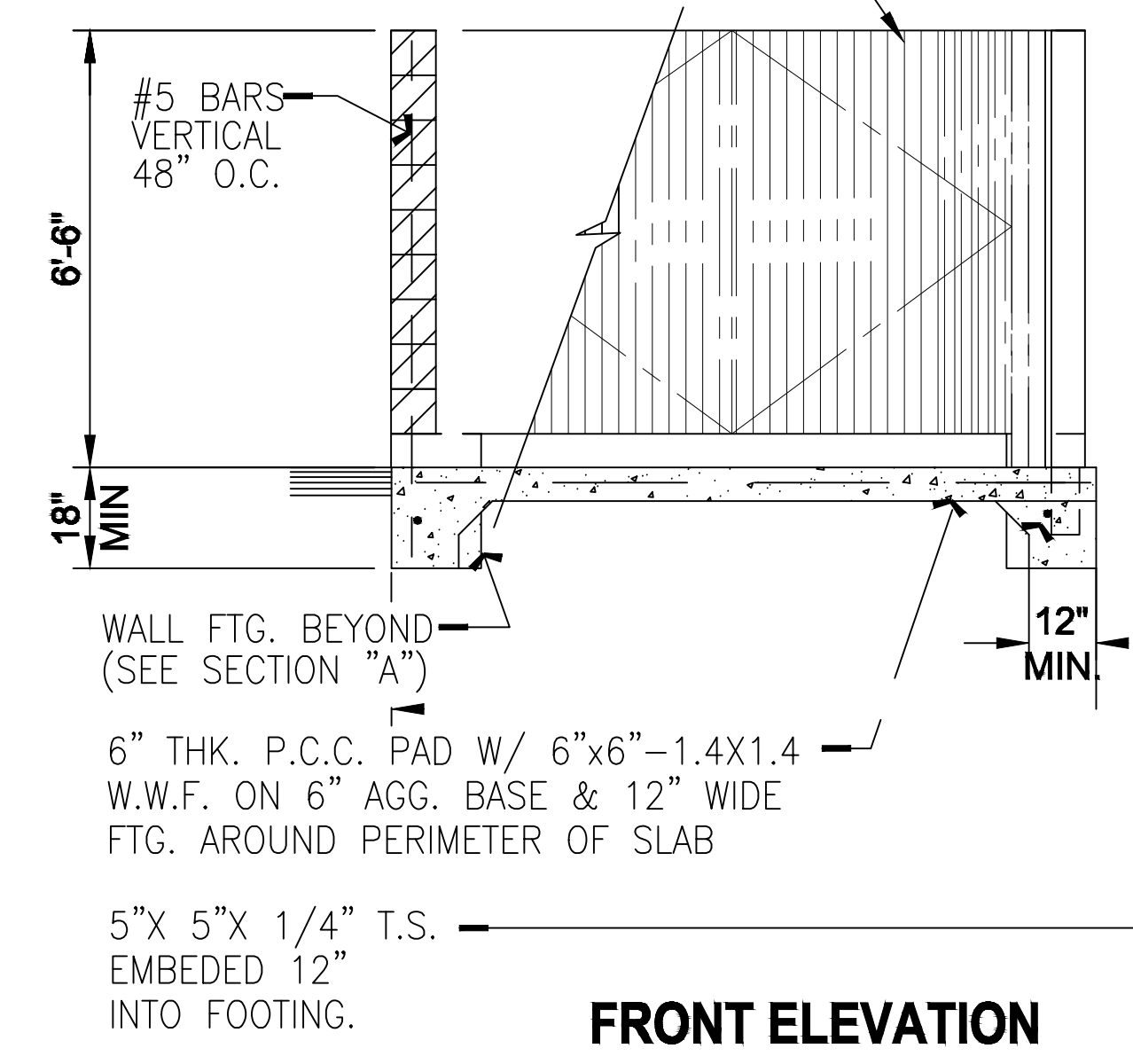


18 GA. CLEANED, PRIMED & PAINTED METAL GATE. (BOX RIB) BUILDING COLOR #7

INCLUDE SIGNAGE INSIDE AND/OR ON THE BINS PROHIBITING THE DISPOSAL OF LIQUIDS AND HAZARDOUS MATERIALS THEREIN.

18 GA. CLEANED, PRIMED & PAINTED METAL GATE. (BOX RIB)

MATCH WITH BUILDING COLOR



- 1/2"DIA. X 8" BARREL BOLT LOCK (ONE GATE)
- 1 1/2"X 1 1/2"X 3/16" METAL ANGLE DIAGONAL BRACE
- 1" X 18 GA. METAL DECK
- 3"X 4"X 1/4" METAL ANGLE FRAME 4 SIDES EA. GATE
- 2 PAIR McKINNEY T4B3781 HINGES EA. GATE WELDED TO GATE & POST
- GROUT SOLID W/ CONCRETE

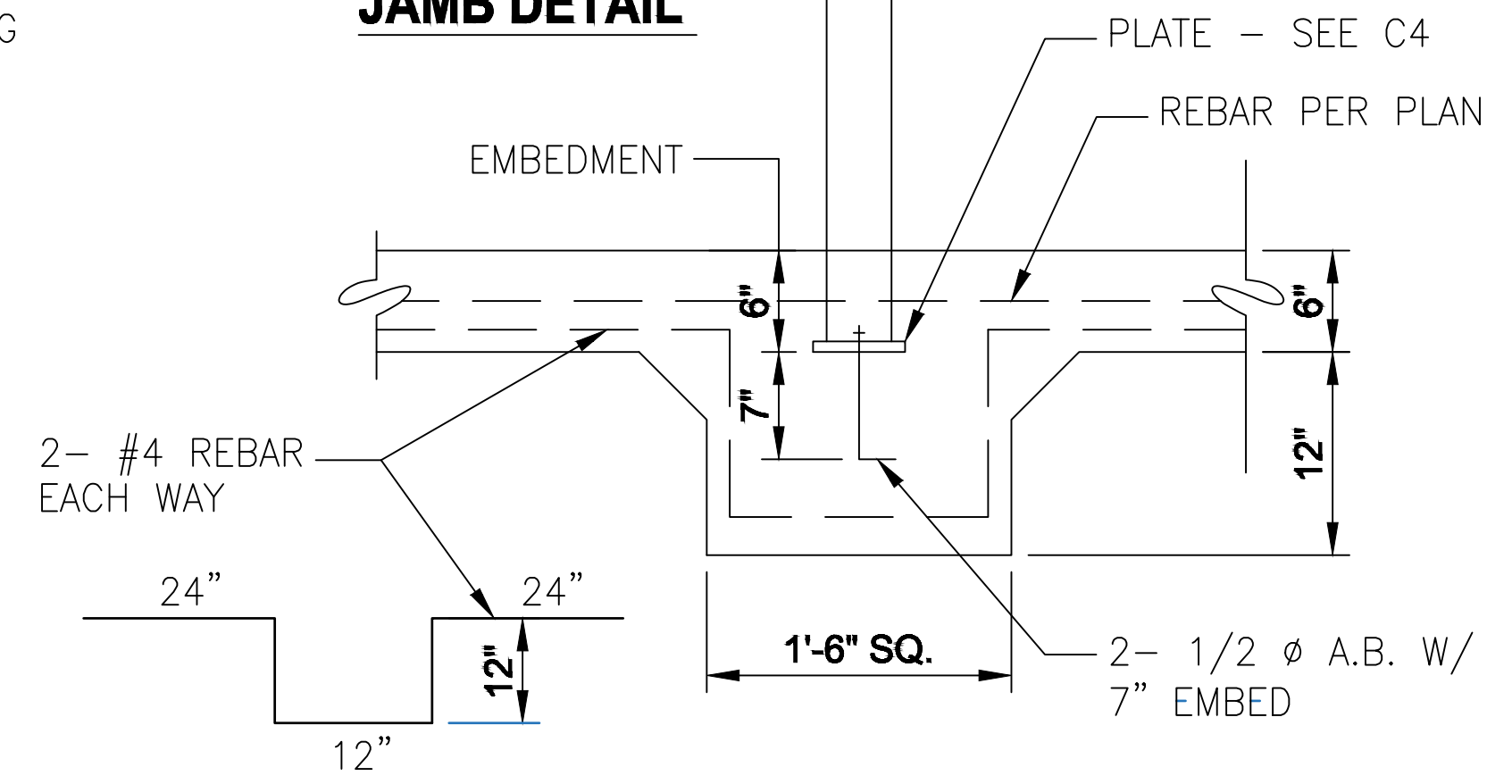
8"X 8"X 16" C.M.U. WALL MATCH WITH BUILDING COLOR

#5 VERT. BAR @ 48" O.C.

#5 HORIZ. BARS @ TOP & MID HGT.

5"X 5"X 1/4" T.S. W/ 5"X 5"X 1/4" CAP PLATE EMBEDDED 12" INTO FOOTING

**JAMB DETAIL**

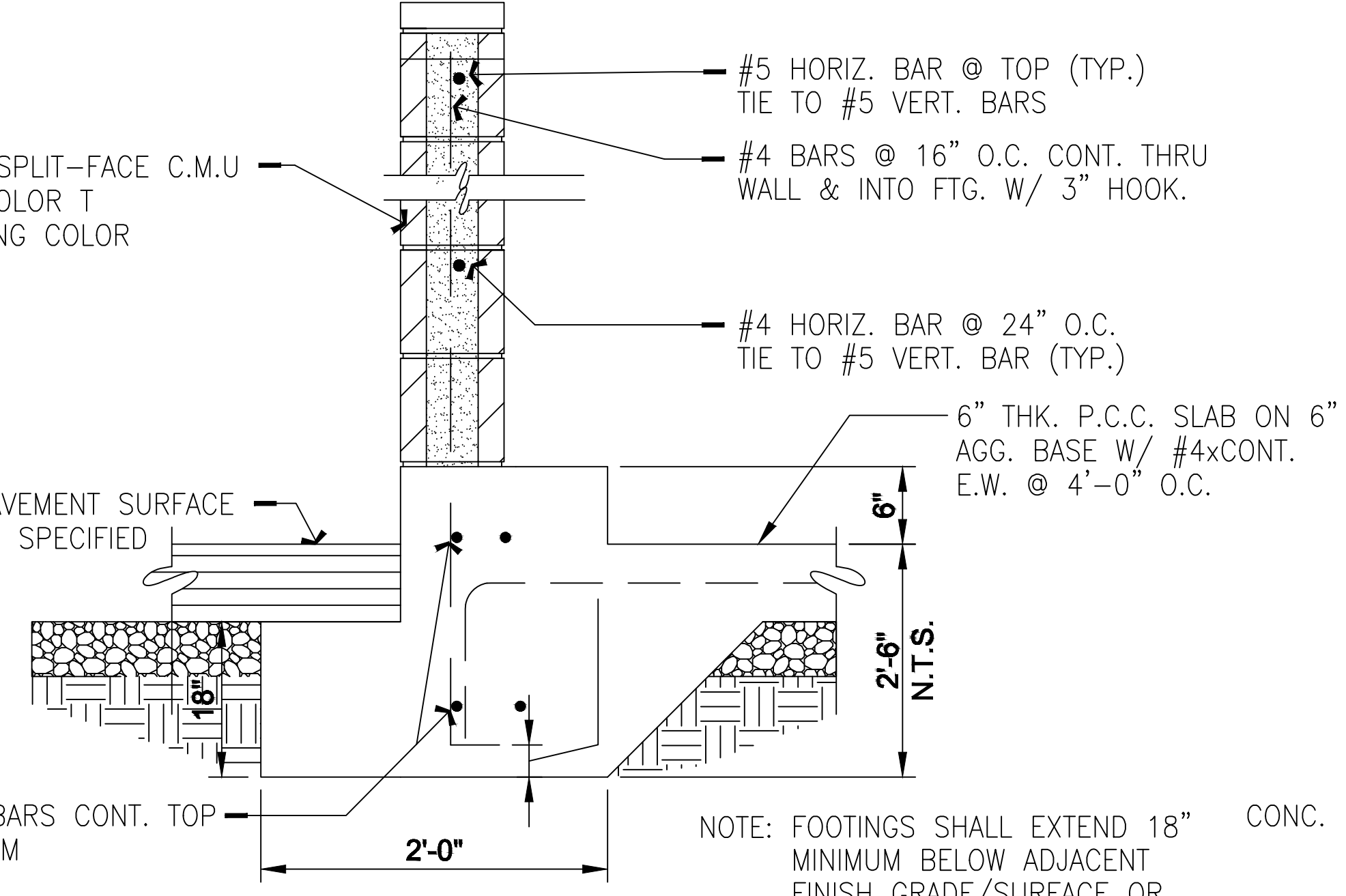


8"X 8"X 16" SPLIT-FACE C.M.U. INTEGRATED COLOR T MATCH BUILDING COLOR

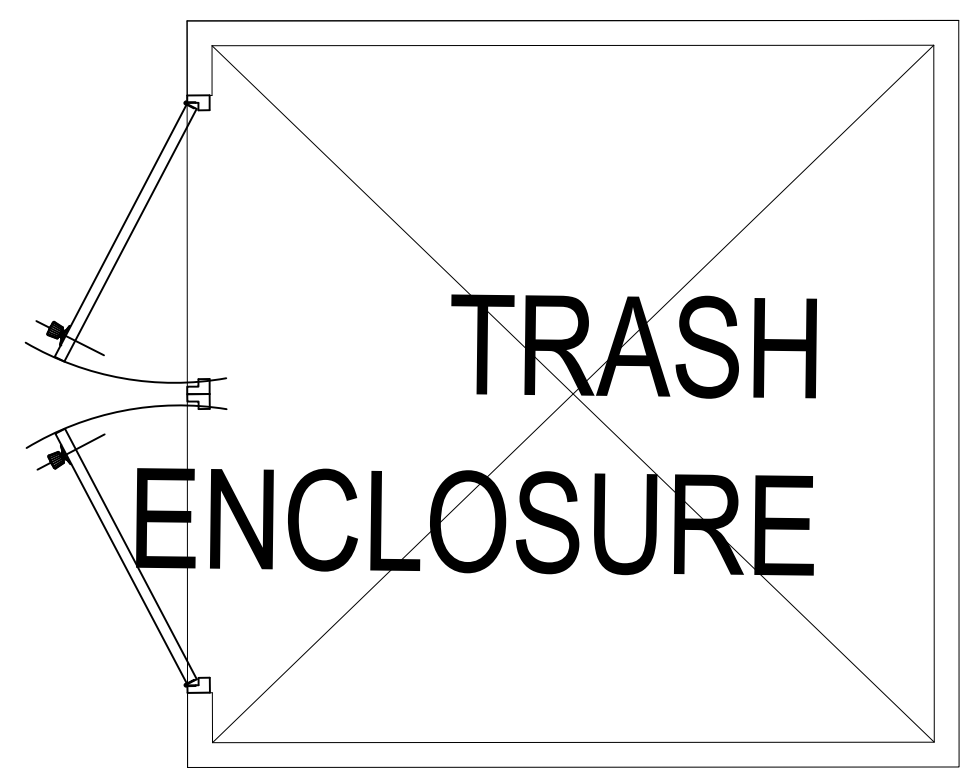
PAVEMENT SURFACE AS SPECIFIED

(2) #5 BARS CONT. TOP & BOTTOM

**SECTION "A"**



NOTE: FOOTINGS SHALL EXTEND 18" MINIMUM BELOW ADJACENT FINISH GRADE/SURFACE OR BELOW FROST DEPTHS PER LOCAL CODES SEE SOILS REPORT FOR ANY ADDITIONAL DESIGN CRITERIA.



**TRASH ENCLOSURE - PLAN**



PROJECT DIRECTOR:  
 FARAH CHAUDHARY  
 PHONE: +1 (916) 793-4048  
 Farah@theboulevard.us

PROJECT MANAGER:  
 M HAMAYOON BAHEZ  
 +1 (916) 477-0102  
 hamayoon@theboulevard.us

ARCHITECT OF RECORD:  
**BOULEVARD**  
 Construction  
 4080 TRUXEL ROAD, SUITE 100,  
 SACRAMENTO, CA, US 95834  
 Website: - https://theboulevard.us  
 Call: +1(916) 330-4200  
 FAX NO: +1(916) 914-2215  
 Email: - info@theboulevard.us

PROJECT:  
 105 S MAIN ST, FORT BRAGG, CA 95437-4207

Assessor Parcel # 008-161-10-00

REVISIONS:	DATE:	DESCRIPTION:	BY:

CURRENT ISSUE DATE:  
**02-05-24**

ISSUED FOR:

CONTROL NO.:

DRAWN BY: **BOULEVARD**

CHECKED:

APPROVED:

SHEET TITLE  
**TRASH ENCLOSURE DETAIL**

SHEET #  
**C-4.0**