

* DIMENSION TO BE DETERMINED BY CONTRACTOR IN FIELD, BASED UPON FIELD MEASUREMENTS OF EXISTING PUMP & COORDINATION W/ MECH DWGS. CONTACT ENGR. W/ FIELD MEASUREMENTS PRIOR TO COMMENCING CONSTRUCTION.

PLAN
3/8"=1'-0"

MONORAIL BEAM
1/8"=1'-0"

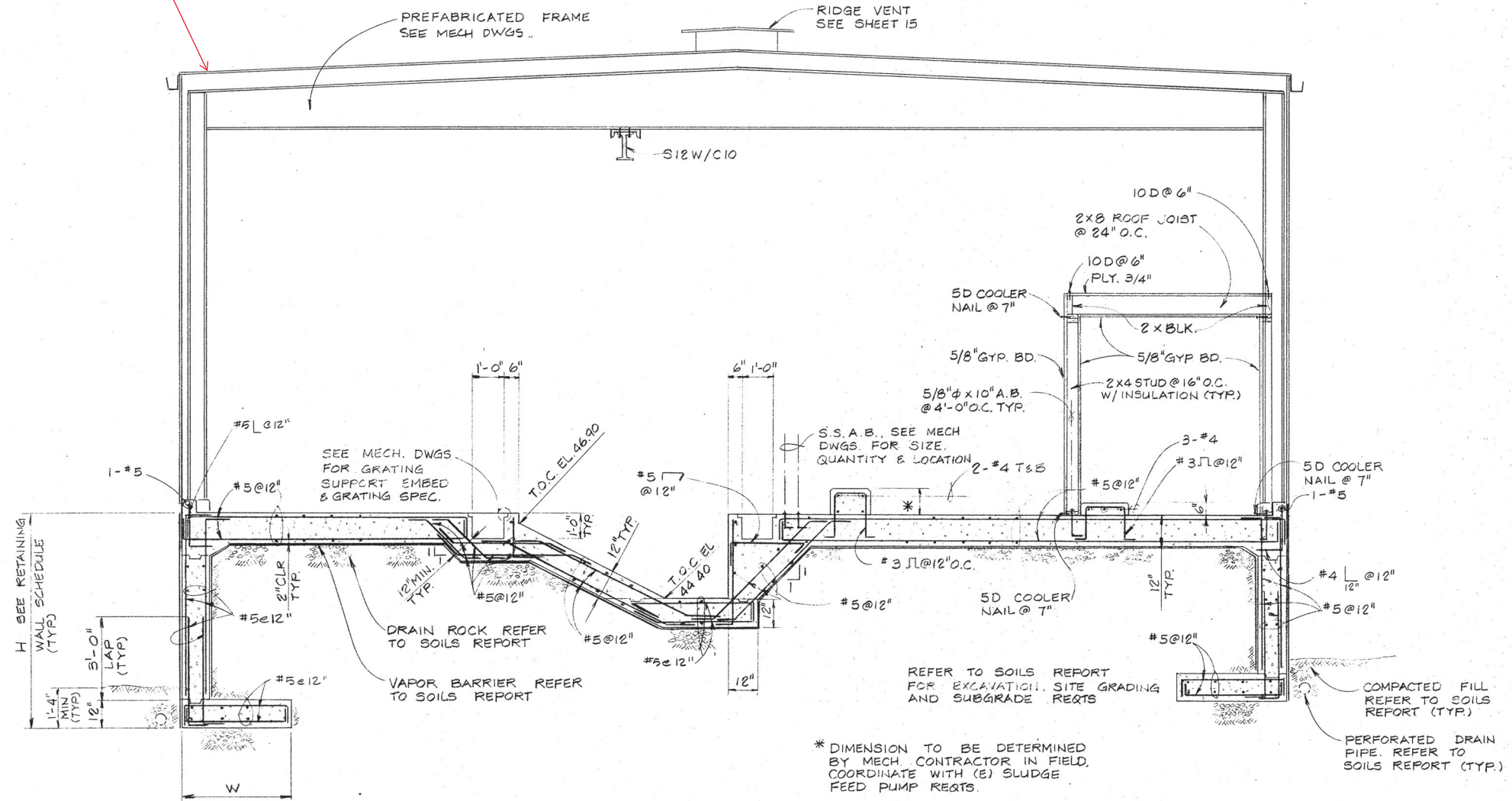
DETAIL 1
3/4"=1'-0"

DETAIL 3
3/4"=1'-0"

ADDITIONAL REBAR AT OPENINGS
N.T.S.

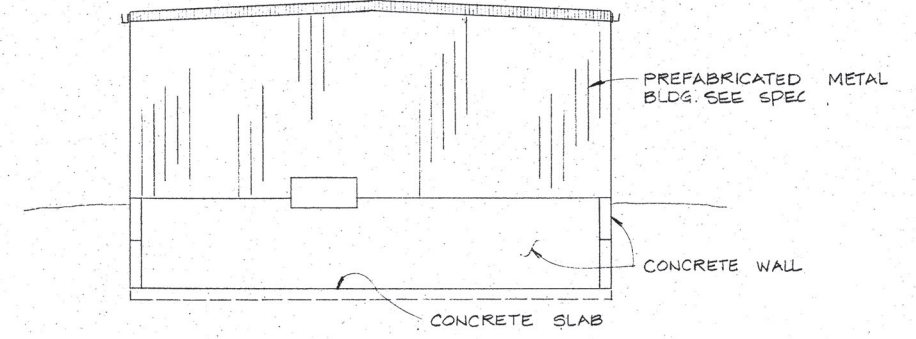
CITY OF FORT BRAGG, CALIFORNIA Municipal Improvement District No. 1	
WASTEWATER TREATMENT PLANT IMPROVEMENTS	
SLUDGE FILTER PRESS STRUCTURAL PLAN & DETAILS	
NUTE ENGINEERING SAN RAFAEL, CALIFORNIA	
Drawn by: JC	Scale: AS SHOWN
Des/Chkd by: JHR	Date: FEB 1988

Bio Solids Dryer Building to be reconstructed

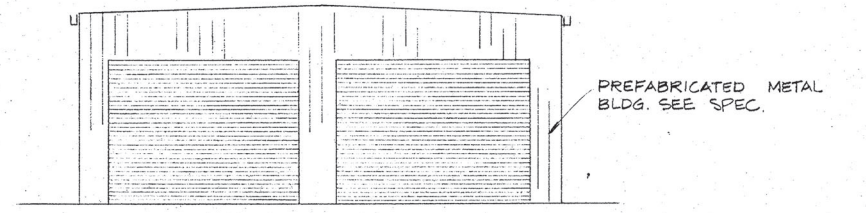


SECTION A
3/8" = 1'-0" 18

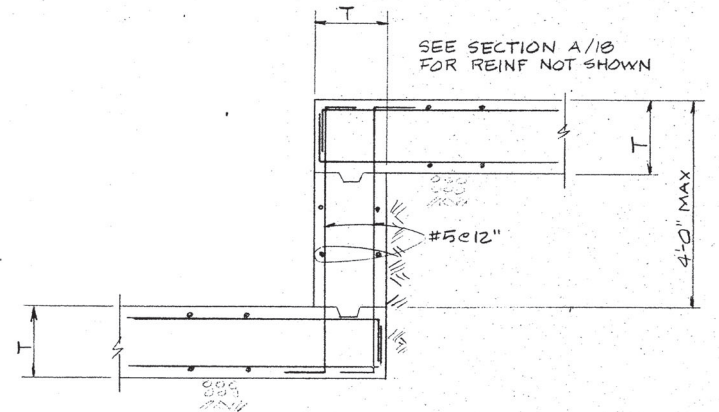
RETAINING WALL	SCHEDULE
H	W
2' $L \le 4'$	2'-0"
4' $L \le 6'$	3'-0"
6' $L \le 8'$	4'-3"
8' $L \le 10'$	5'-6"



ELEVATION B
1/8" = 1'-0" 18



ELEVATION C
1/8" = 1'-0" 18



DETAIL 1
3/4" = 1'-0" 18

CITY OF FORT BRAGG, CALIFORNIA
Municipal Improvement District No. 1

WASTEWATER TREATMENT PLANT IMPROVEMENTS

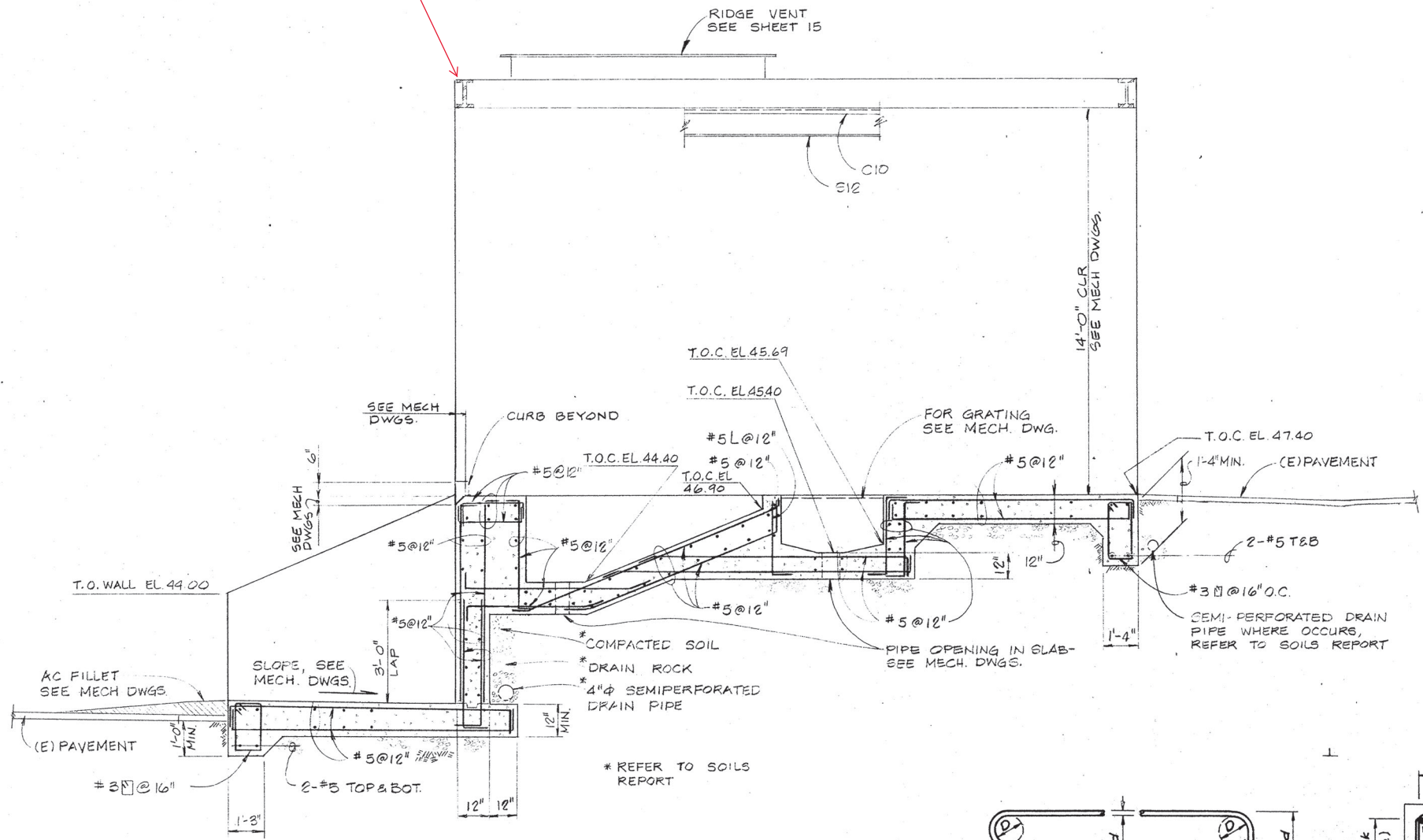
SLUDGE FILTER PRESS STRUCTURAL SECTION A & DETAILS

NUTE ENGINEERING
SAN RAFAEL, CALIFORNIA

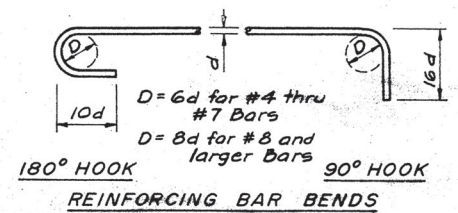
Drawn by: JC
Des/Chkd by: JHR

Scale: AS SHOWN
Date: FEB 1988

Bio Solids Dryer Building to be reconstructed



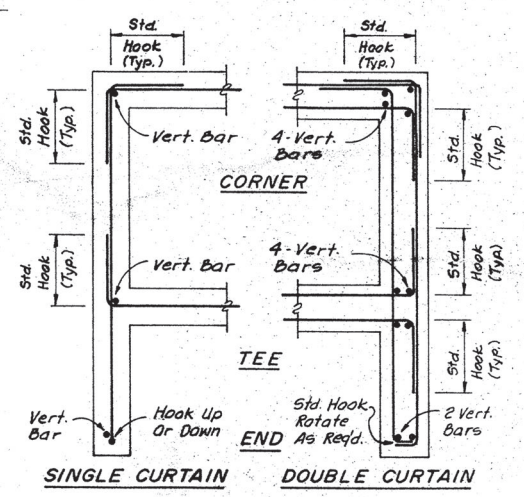
SECTION A 20



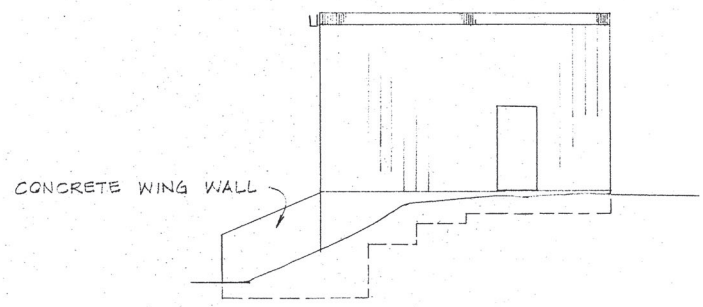
TYPICAL BAR CLEARANCES

FOOTINGS	BOTTOM, UNFORMED SIDES	3"
	FORMED SIDES	1 1/2"
	TOP	2"
WALLS	UNLESS NOTED OTHERWISE	1/2"
SLABS	UNLESS NOTED OTHERWISE	1/2"

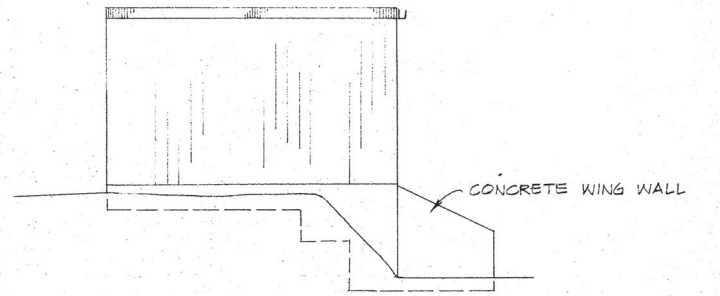
REINFORCING BARS



HORIZONTAL BARS IN WALLS & FOOTINGS



EAST ELEVATION B 20
1/8" = 1'-0"



WEST ELEVATION C 20
1/8" = 1'-0"

CITY OF FORT BRAGG, CALIFORNIA
Municipal Improvement District No. 1

WASTEWATER TREATMENT PLANT IMPROVEMENTS

SLUDGE FILTER PRESS
STRUCTURAL
SECTION C & DETAILS

NUTE ENGINEERING
SAN RAFAEL, CALIFORNIA

Drawn by: JC	Scale: AS SHOWN
Des/Chkd by: JHR	Date: FEB 1988