



Presented by: Michelle Goodman
Education and Outreach Manager

About Us

Who is Redwood Waste Solutions?

- C&S Waste Solutions has been servicing Lake and Mendocino County for nearly 15 years
- Redwood Waste Solutions began servicing Fort Bragg on July 1st, 2022
- C&S Waste Solutions was recently acquired by Waste Connections
- Waste Connections is the 3rd largest solid waste company in North America



Customer Service Locations

Come visit us!

Fort Bragg and Coastal County

- There is a Customer Service office opening in Fort Bragg.
 - 325A E. Redwood Ave. Fort Bragg, CA 95437
 - Open Monday- Friday from 8:00AM-4:30PM



Residential Service Offerings

- Curbside sizes are 20-, 32-, 64-, or 96-Gallon Carts
- Grey lids are trash, blue lids are recycling, and green lids will be organic waste per SB1383 requirements.
- We utilize Split Body Collection Trucks



Commercial Service Offerings

- Cart and dumpster sizes will remain the same. Carts: 20-, 32-, 64-, or 96-.
Dumpsters: 1-6yds
- Collection days are up to 5x per week
- Organics collection is available



Special Service Offerings

- Bulky Item and Electronic Waste collection. (2 Items per year)
 - Changed a bit for City customers through the switch over to RWS
- Holiday Tree Collection
- Paper Shredding Event (1 event annually)



Mobile CRV Redemption Center

- 1 of 10 Pilot Projects allowed in the state
- Mendocino Middle School & Caspar Community Center
- Fort Bragg Food Bank
 - Designed with individuals on foot or bike in mind
 - Takes place in a corner of the food bank lot

Mobile CRV Buy Back Recycling

Redeem Your CRV Eligible Recyclables

Sundays

8:30 a.m. - 5:00 p.m.

Closed from 12:00 - 12:30 p.m. for lunch.

MENDOCINO K-8 SCHOOL

44261 Little Lake Road
Mendocino, CA 95460

Mondays

8:30 a.m. - 5:00 p.m.

Closed from 12:00 - 12:30 p.m. for lunch.

CASPAR COMMUNITY CENTER

15051 Caspar Road
Caspar, California 95420



The Mobile Buy Back at these two locations is a Drive-Through event. All items must have their original labels and be empty, clean, and dry. Please do not crush cans. A valid California ID is required.

Customers are limited to 100 pounds of aluminum maximum, 100 pounds of plastic maximum, and 1,000 pounds of glass maximum. Customers exceeding the daily limit will be turned away.

Eligible CRV container items include:

- Beer and malt beverages
- Wine coolers and distilled spirit coolers
- Carbonated fruit drinks, water or soft drinks
- Non-carbonated fruit drinks, water or soft drinks
- Coffee and tea beverages
- 100% fruit juice less than 46 oz.
- Vegetable juice 16 oz. or less
- Sports drinks

Starting January 1, 2024, Distilled Spirits and Wine (including sparkling and alcohol removed wine) in any container material, including box, bladder, or pouch, will also be eligible.



How Does The Pilot Project Work?

- We show up & leave all in the same day
- No trace should be left behind
- Mobile Scales are utilized on-site
- Payment is offered via check, which is the same form of payment provided by the previous CRV Redemption Center
- Benefits of the mobile program

Where does the Coast's Waste Go?

Solid Waste of Willits & Cold Creek Compost

Landfill: Solid Waste of Willits

Recycle: Solid Waste of Willits

Organics: Cold Creek Compost

LANDFILL

PLACE THESE ITEMS IN YOUR GRAY CART

Paper waste & liners
Desechos de papelería y plásticos

Syringes
Jeringas o pipetas

Clothing
Ropa

Plastic bags, shoes & car seats
Bolsas de plástico, zapatos y asientos de plástico

Paper coffee cups, receipts, hard cover books
Tazas de café de papel, recibos, libros de tapa dura

Full food plastic, cartons & wrappers
Cajas de cartón llenas con papel de aluminio envolturas de plástico

Ceramics, dishes, glassware, mirrors & broken glass
Vajilla, espejos, espejos de vidrio y vidrio roto

COLOQUE ESTOS ARTÍCULOS EN SU CARRITO GRIS

<ul style="list-style-type: none"> • Food scraps • Food soiled paper • Yard/garden waste, wood • Metal, aluminum cans, tin, tin • Recyclable plastic bottles, milk/jug/gallon containers • Recyclable paper: newspapers, magazines, newspapers 	<ul style="list-style-type: none"> • Pizza boxes • Cardboard • Paper • Light bulbs • Syringes • Batteries • Electronics • Household Waste 	<p>NO</p> <ul style="list-style-type: none"> • Holes de corcha • Paper menor que 10 cm x 10 cm • Residuos de paños, maderas • Chaires, sillas y sillas de aluminio, sillas • Acabados de paredes, techos, pisos • Cables eléctricos, auto, uso, uso • Paper, residuos, residuos, residuos, sillas de plástico 	<ul style="list-style-type: none"> • Cans de pintura • Carbur • Pintura • Bombillas • Acabados • Cables eléctricos, auto, uso, uso • Residuos peligrosos
------------------------------------------------------------------------------------------------------------------------------------------------------------------------------------------------------------------------------------------------------------------------------------------------------------	-------------------------------------------------------------------------------------------------------------------------------------------------------------------------------------------------------------------------	-------------------------------------------------------------------------------------------------------------------------------------------------------------------------------------------------------------------------------------------------------------------------------------------------------------------------------------------------------------------------------------------	-------------------------------------------------------------------------------------------------------------------------------------------------------------------------------------------------------------------------------

C&S WASTE SOLUTIONS
www.CandSwaste.com

RECYCLING

ALL ITEMS EMPTY & CLEAN • TODO VACÍO Y LIMPIO

Plastic
Plásticos

Aluminum & Household Metal
Latón y Aluminio

Glass
Vidrio

Cartons
Cartones de leche y leche

Paper & Cardboard
Papel y Cartón

Shredded Paper
Papel y Cartón

Recyclables should be loose in cart, not in plastic bags, except for shredded paper, and must fit inside cart with lid closed. Place cart at curb with front of cart facing the street. Cart must be within 3 feet of the street to be serviced.

<ul style="list-style-type: none"> • Garbage • Batteries • Ceramics • Clothing • Syringes 	<ul style="list-style-type: none"> • Hazardous Waste • CDs/DVDs/Videos • Light Bulbs • Tents & Hoses • Styrofoam 	<p>NO</p> <ul style="list-style-type: none"> • Basura • Baterías • Cerámicas • Ropa • Jeringas 	<ul style="list-style-type: none"> • Residuos Peligrosos • CDs / DVDs / Videos • Cerámicas • Bombillas • Lonas y Mangueras • Espuma de Poliestireno
----------------------------------------------------------------------------------------------------------------------------------------------	-------------------------------------------------------------------------------------------------------------------------------------------------------------------------	----------------------------------------------------------------------------------------------------------------------------------------------------------	-----------------------------------------------------------------------------------------------------------------------------------------------------------------------------------------------------------------

C&S WASTE SOLUTIONS
www.CandSwaste.com

MIXED ORGANIC WASTE

LID MUST BE CLOSED • TAPADERA CERRADA

Food scraps
Basura de comida

Coffee grounds & filters
Residuos de café

Strawcut - less than 4" in diameter
Residuos de paja

Garden & Houseplants
Plantas de exterior y interior

Meat, poultry, fish & bones
Carne, pollo, pescado y huesos

Food soiled paper
Papel ensuciado de alimentos

Grass Clippings & Weeds
Hierba

Limbs
Patas

Food soiled paper plates, cups, aluminum meal only plates, vases, ornaments & metal de paper

Pizza boxes
Cajas de pizza

Brush & Prunings
Ramones de árboles

Small Lumber - Untreated
Madera de interior

Mixed organic waste should be loose in cart, not in plastic bags and must fit inside cart with lid closed. Place cart at curb with front of cart facing the street. Cart must be within 3 feet of the street to be serviced.

<ul style="list-style-type: none"> • Poison Oak • Greases or Oil • Metals or Metal • Hot Airflow • Hazardous Waste • Palm Fronds 	<ul style="list-style-type: none"> • Garbage/Recyclables • Bricks/Concrete/Block • Painted/Treated Wood • Tree Stumps • Hot Water/Hot • Plastic Bags or Pots 	<p>NO</p> <ul style="list-style-type: none"> • Holes • Green o Acabado • Cables o Metales • Carbón o Carbón • Madera Tratada/Pintada • Hojas de Palma 	<ul style="list-style-type: none"> • Branches/Reciclables • Green o Acabado • Cables o Metales • Carbón o Carbón • Hojas de Palma • Bases o Maderas de Plástico
----------------------------------------------------------------------------------------------------------------------------------------------------------------------------------------------	--------------------------------------------------------------------------------------------------------------------------------------------------------------------------------------------------------------------------	--------------------------------------------------------------------------------------------------------------------------------------------------------------------------------------------------------------------------	-----------------------------------------------------------------------------------------------------------------------------------------------------------------------------------------------------------------------------

C&S WASTE SOLUTIONS
www.CandSwaste.com

What goes in the Landfill Cart?

- Styrofoam
- Compostable Bags
- Plastic cutlery
- Plastic Bags
- Pet Waste



LANDFILL

PLACE THESE ITEMS IN YOUR GRAY CART

Pet waste & diapers
Desechos de mascotas y pañales

Styrofoam
Espuma de poliestireno

Clothing
Ropa

Plastic bags, straws & utensils
Bolsas, pajitas y utensilios de plástico

Paper coffee cups, receipts, hard cover books
Tazas de café de papel, ingresos, libros de tapa dura

Foil lined plastic cartons & wrappers
Cajas de cartón forradas con papel de aluminio y envoltorios de plástico

Ceramics, dish/ glassware window & broken glass
Vajilla, cristalería, ventanas de vidrio y vidrio roto

COLOQUE ESTOS ARTÍCULOS EN SU CARRITO GRIS

<ul style="list-style-type: none"> • Food scraps • Food soiled paper • Yard/garden waste, wood • Metal, aluminum cans, foil, tin • Recyclable plastic bottles, milk/soup/juice cartons • Recyclable paper: newspaper, magazines, paperbacks 	<ul style="list-style-type: none"> • Pizza boxes • Cardboard • Paint • Light bulbs • Syringes • Batteries • Electronics • Hazardous Waste 	<ul style="list-style-type: none"> • Residuos de comida • Papel manchado de comida • Residuos de jardín, madera • Chalarra, latas y papel de aluminio, estaño • Botellas de plástico reciclables • Cartones reciclables: leche, sopa, jugo • Papel reciclable: periódicos, revistas, libros de bolsillo 	<ul style="list-style-type: none"> • Cajas de pizza • Cartón • Pintura • Bombillas • Jeringas • Baterías • Electrónica • Residuos peligrosos
---------------------------------------------------------------------------------------------------------------------------------------------------------------------------------------------------------------------------------------------------------------------------------------------------------	-------------------------------------------------------------------------------------------------------------------------------------------------------------------------------------------------------------------------	------------------------------------------------------------------------------------------------------------------------------------------------------------------------------------------------------------------------------------------------------------------------------------------------------------------------------------------------------------------------------	----------------------------------------------------------------------------------------------------------------------------------------------------------------------------------------------------------------------------

C&S WASTE SOLUTIONS
www.CandSwaste.com

What goes in the Recycle Cart?

- Cardboard
- Plastic
- Glass
- Cartons
- Aluminum



RECYCLING



ALL ITEMS EMPTY & CLEAN • TODO VACÍO Y LIMPIO



Plastic ♻️ to ♻️
Plásticos



Aluminum & Household Metal
Latas y Aluminio



Glass
Vidrio



Cartons
Cartones de Jugo y Leche



Paper & Cardboard
Papel y Carton



Shredded Paper
Papel y Carton

Recyclables should be loose in cart, not in plastic bags, except for shredded paper, and must fit inside cart with lid closed. Place cart at curb with front of cart facing the street. Cart must be within 3 feet of the street to be serviced.

- Garbage
- Batteries
- Ceramics
- Clothing
- Syringes

- Hazardous Waste
- CDs/DVDs/Videos
- Light Bulbs
- Tarps & Hoses
- Styrofoam

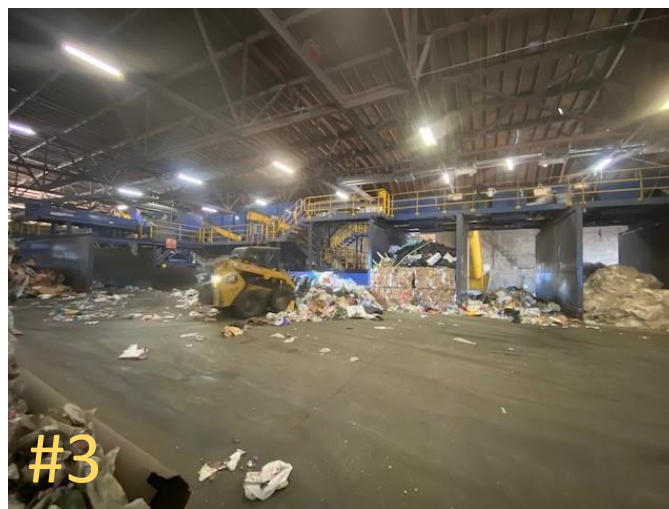


- Basura
- Baterías
- Cerámica
- Ropa
- Jeringas
- Residuos Peligrosos
- CDs / DVDs / Vídeos
- Bombillas
- Lonas y Mangueras
- Espuma de Poliestireno

C&S WASTE SOLUTIONS

www.CandSwaste.com

What does a “mrf” look like?



***This is NOT Solid Waste of Willit's MRF. This is our MRF in Ukiah

1. Bailer, Paper sort, Cardboard Sort
2. Paper Sort & Cardboard Sort
3. Pre-sort (Contamination)
4. Aluminum, Tin, Beverage Plastics, and milk jugs

What goes in the Organics Cart?

- Food Waste
- Coffee Grounds
- Yard Waste
- Food Soiled Paper
- Pizza Boxes



MIXED ORGANIC WASTE

LID MUST BE CLOSED • TAPADERA CERADA

 Food Scraps Basuras de comida	 Coffee grounds & filters Filtros de café	 Branches - less than 4" in diameter Ramitas del Árbol Pajonales	 Garden & Houseplants Plantas de Exterior y Interior
 Meat, poultry, fish & bones Carne, pascado y huesos	 Food soiled paper Papel manchado de alimentos	 Grass Clippings & Weeds Hierba	 Leaves Hojas
 Food soiled paper plates, cups, napkins & paper towels Alimentos papel sucio platos, vasos, servilletas & toallas de papel	 Pizza boxes Cajas de pizza	 Brush & Prunings Bramas de Poda	 Small Lumber - Untreated Madera no Tratada

Mixed organic waste should be loose in cart, not in plastic bags and must fit inside cart with lid closed. Place cart at curb with front of cart facing the street. Cart must be within 3 feet of the street to be serviced.

• Poison Oak	• Garbage/Recyclables	• Nails	• Burns/Residuos
• Grease or Oil	• Brick/Concrete/Rock	• Grass or Asfalto	• Ladrillo/Concrete/Piedra
• Nails or Metal	• Painted/Treated Wood	• Claves o Metal	• Madera Pintada/Tratada
• Hot Ashes	• Tree Stumps	• Cenizas Calientes	• Troncos de Árboles
• Hazardous Waste	• Pet Waste/Litter	• Material Peligroso	• Desechos de Animales
• Palm Fronds	• Plastic Bags or Pots	• Hojas de Palma	• Bolsas o Macetas de Plásticos

NO

What's Up With Compostable Plastics?

- They DO decompose, but not at the same rate as other organic material
 - We are looking into BPI certified bags right now, but there are no guarantees at the moment of acceptability
 - Paper Bags can be used as an immediate alternative to compostable plastic bags
- They jeopardize the organic certification, and Cold Creek is Organic Certified
- How does the processor know if the item is truly compostable or not when sorting through the large loads?



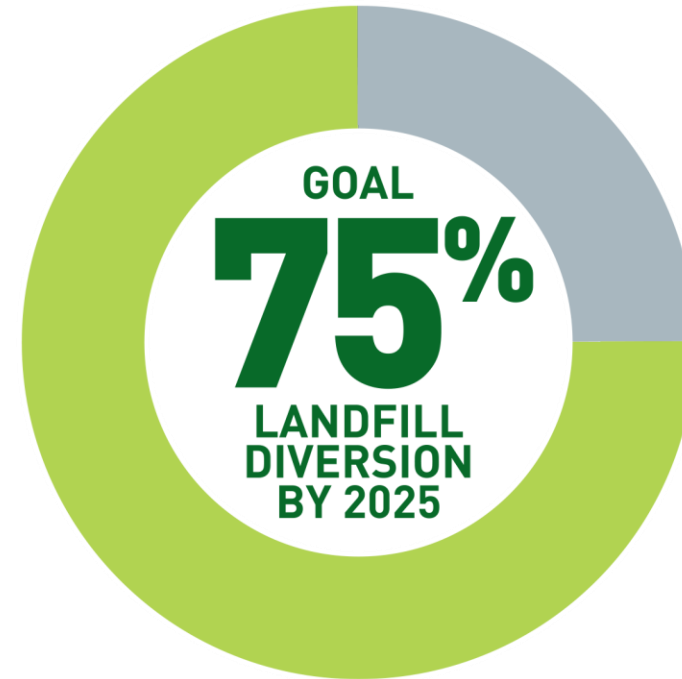
What Does An Organic Facility Look Like?



***This is NOT Cold Creek
Compost’s Facility

SB1383 Implementation

- Required color and labeling of carts
- Organic waste collection-Commercial
- Route Audits
- Waivers
- Education and Outreach
 - School Outreach
 - Newsletters
 - Commercial Customer Education
 - Multi-Family Education
- Edible Food Recovery Program
 - In collaboration with the City & County



What is Hazardous Waste?

- Chemicals
- Sharps
- Medications
- Propane Tanks
- Batteries

HOUSEHOLD HAZARDOUS WASTE

STOP! IT'S TOO **TOXIC** TO TRASH!

Household hazardous waste (HHW) includes products that contain ingredients that are harmful or dangerous to humans, animals, and the environment. HHW DOES NOT GO IN THE TRASH. It must be taken to a facility for proper disposal. Below are various types of HHW.

CORROSIVES: acids, bases, batteries, drain or pipe clog remover



IGNITABLE: paints (dry or wet), petroleum-based products, polishes, gasoline



REACTIVE: pool chemicals, hydrogen peroxide, iodine, perchlorates



TOXICS: poisons, pesticides, gardening chemicals, ammonia, solvents



MISCELLANEOUS: propane tanks, smoke detectors, fluorescent lamps



PLEASE DO NOT DISPOSE OF THESE ITEMS IN THE TRASH.
FOR PROPER DISPOSAL, PLEASE TAKE THEM TO THE FACILITIES LISTED ON THE REVERSE.

HHW in Mendocino County

- Mobile Event took place at Caspar Transfer Station on August 3rd & 4th from 9am-1pm for residential customers
- Transfer Station Collection is available for certain items
- There is a 15 Gallon HHW Limit
- Maximum 60 Linear feet of Fluorescent bulbs

HOUSEHOLD HAZARDOUS WASTE DISPOSAL LOCATIONS

Household Hazardous Waste is strictly prohibited in all garbage, recycling, and organic waste.
The locations listed below accept the following household hazardous wastes materials.

UKIAH TRANSFER STATION

3151 Taylor Drive, Ukiah | (707) 462-8621

- Light Bulbs
- Latex Paint
- Batteries
- Electronic Waste
- Used Motor Oil
- Used Oil Filters
- Appliances
- Treated Wood Waste

BOONVILLE TRANSFER STATION

18851 Mountain View Road, Boonville
(707) 895-3569

- Latex Paint
- Batteries
- Sharps
- Used Motor Oil
- Treated Wood Waste

WESTPORT TRANSFER STATION

37551 N. Hwy 1, Westport
(707) 972-4687

- Latex Paint
- Batteries
- Sharps

ALBION TRANSFER STATION

30180 Albion Ridge Road, Albion
(707) 937-3918

- Latex Paint
- Batteries
- Sharps
- Electronic Waste
- Used Motor Oil
- Treated Wood

COVELO TRANSFER STATION

90500 Refusa Road, Covelo | (707) 489-2062

- Latex Paint
- Batteries
- Sharps
- Electronic Waste
- Used Motor Oil
- Treated Wood

LAYTONVILLE TRANSFER STATION

1825 Branscomb Road, Laytonville | (707) 984-8303

- Latex Paint
- Batteries
- Sharps
- Electronic Waste
- Used Motor Oil
- Treated Wood

POTTER VALLEY TRANSFER STATION

8923 Main Street, Potter Valley | (707) 489-8012

- Latex Paint
- Batteries
- Sharps
- Used Motor Oil
- Electronic Waste
- Treated Wood Waste

SOUTH COAST TRANSFER STATION

40855 Fish Rock Road, Gualala | (707) 489-8018

- Latex Paint
- Batteries
- Sharps
- Used Motor Oil
- Appliances
- Treated Wood Waste

CASPAR TRANSFER STATION

15000 Prairie Way, Mendocino
(707) 964-3781

- Light Bulbs
- Fluorescent Tubes
- Latex Paint
- Batteries
- Sharps
- Used Motor Oil
- Electronic Waste
- Appliances
- Treated Wood Waste

WILLITS TRANSFER STATION

351 Franklin Avenue, Willits
(707) 459-4778

- Light Bulbs
- Fluorescent Tubes
- Latex Paint
- Batteries
- Sharps
- Electronic Waste
- Used Motor Oil
- Used Oil Filters
- Appliances
- Treated Wood Waste

Customers are limited to a maximum of 15 gallons of combined HHW items.

For items not listed here, please visit the MendoRecycle website at www.MendoRecycle.com, visit in person at 3200 Taylor Drive in Ukiah, or check the Haz-Mobile event schedule.

STOP! IT'S TOO TOXIC TO TRASH

We Offer Lots of Free Public Education!

Call us at 707-234-6400 if you are interested



Facility Tours



School Presentations & Trainings



Group Presentations



Bilingual On-Site trainings at commercial businesses and apartment complexes



Bilingual flyers, posters, magnets, newsletters, and more



Public Education Booths at Events



Redwood Recycles



REDWOOD RECYCLES



- RECYCLING GUIDE
- COLLECTION REMINDERS
- RESIDENTS
- BUSINESS & SCHOOLS
- TIPS, NEWS & EVENTS
- CLEAN WATER
- FAQ

What do you need to recycle today?

Follow Us On Facebook!



Topics we post about:

- Service delays
- Fun sustainability facts
- Updates on different service offerings
- Job Opportunities
- You can message us with questions
- Stay up to date on community involvement



Redwood Waste Solutions

@redwoodwastesolutions · Waste Management Company