

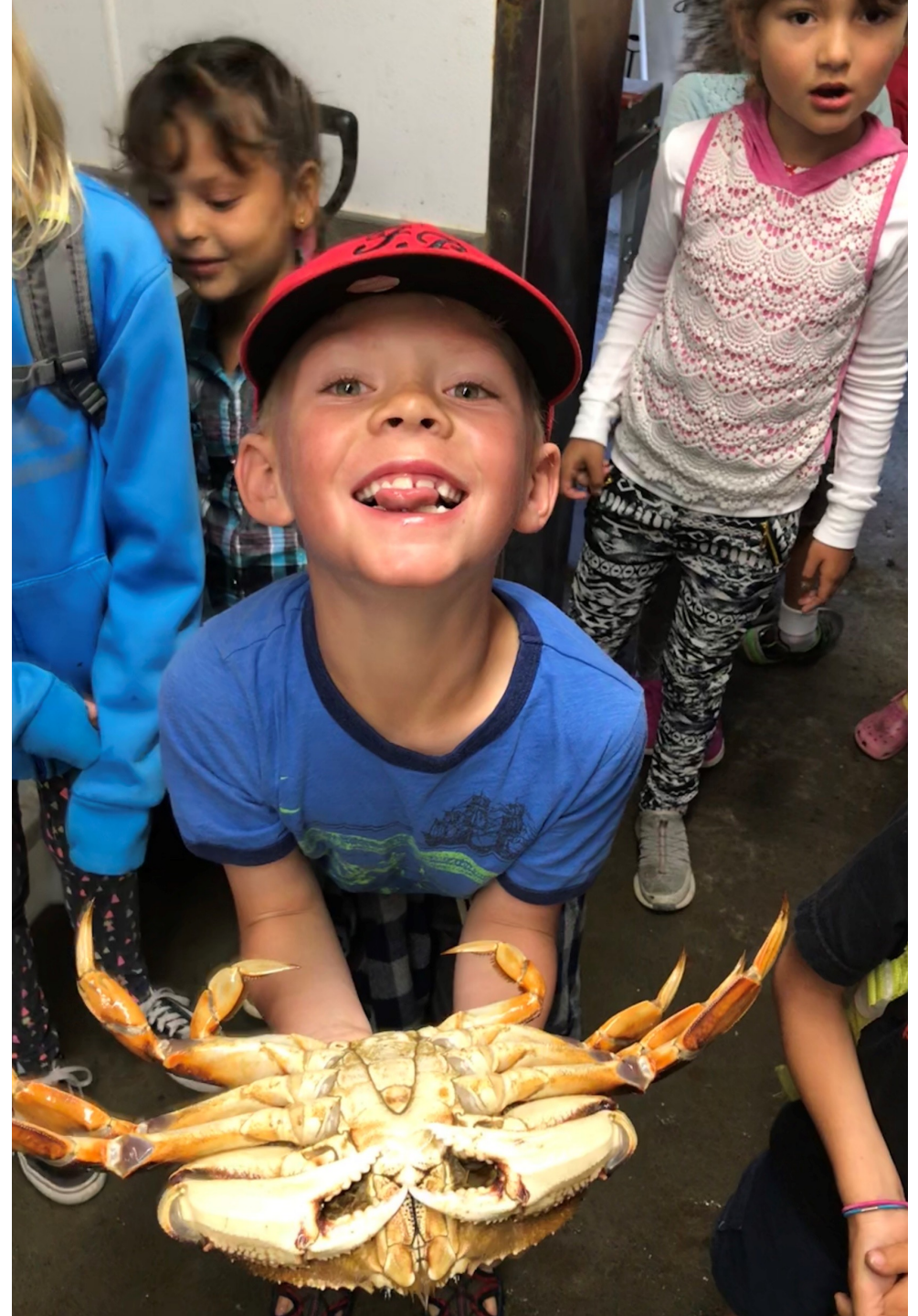
# NOYO CENTER FOR MARINE SCIENCE



Sheila Semans  
Executive Director

[www.noyocenter.org](http://www.noyocenter.org)

Mission:  
To advance ocean  
conservation  
through  
education,  
exploration and  
experience





Discovery Center



Noyo Harbor

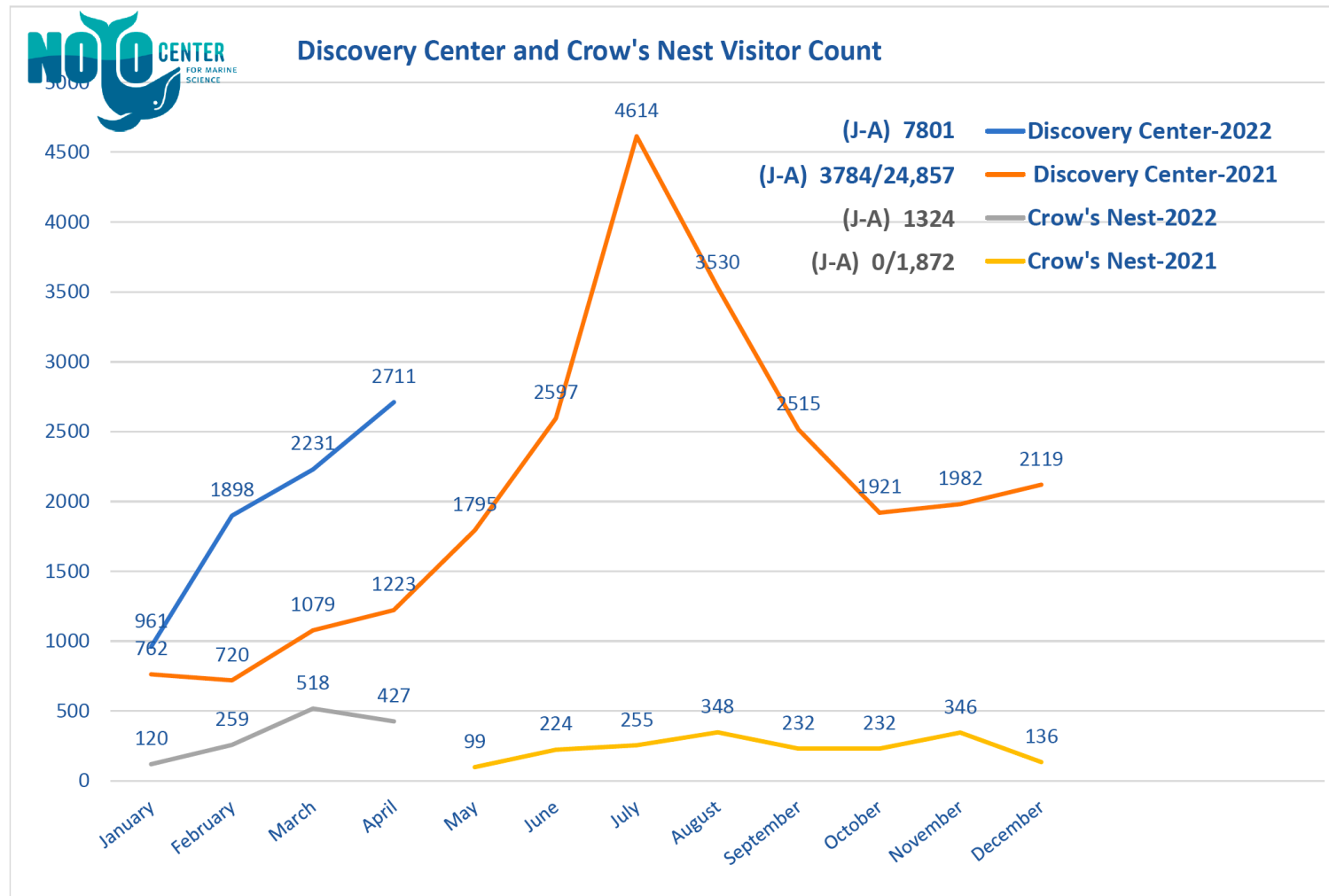


Crow's Nest Interpretive Center

## Noyo Center's Three Locations

---

# Public Visitors



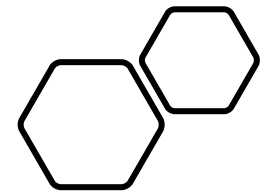
\* Jan-April 2021: Crow's Nest and Discovery Center Museum were closed due to Covid. DC retail opened in January on a limited basis.



# EDUCATION

Mostly *out* of the classroom

Blue whale field trips:  
640 kids + 140 teachers and chaperones





*Post high school intern working on marine mammal response.*



*High school junior working on Sea Otter articulation and exhibit for Discovery Center.*



*Paper published in Frontiers in Ecology and the Environment. A Tale of Two Whales: applying digital imaging and 3D printing to cetacean research and education.*

# Education: Interns

Inspiring the next generation of environmental leaders



Mendocino Coast  
Discovery Camp  
2022

Ages 11-14

July 11 - 15



Registration and More Info



<https://noyocenter.org>



# Summer Camps

Four Camps, 60 students



Red Tide Program



Beach Survey Team



Beach Clean-ups



Sea Star BioBlitz

# CITIZEN SCIENCE



# Volunteers: the heart of this organization

---

Over the last 12 months: 49 volunteers have contributed over 1530 hours!

- Crow's Nest docents
- Citizen Science programs
- Special Events
- Fishermen's Market
- Harbor building remodel





Marine Mammal  
Response:  
April 21-April 22:  
76 animals



Help the Kelp:  
Abalone Broodstock Program  
Urchin Aquaculture

# Research



# Noyo Center for Marine Science

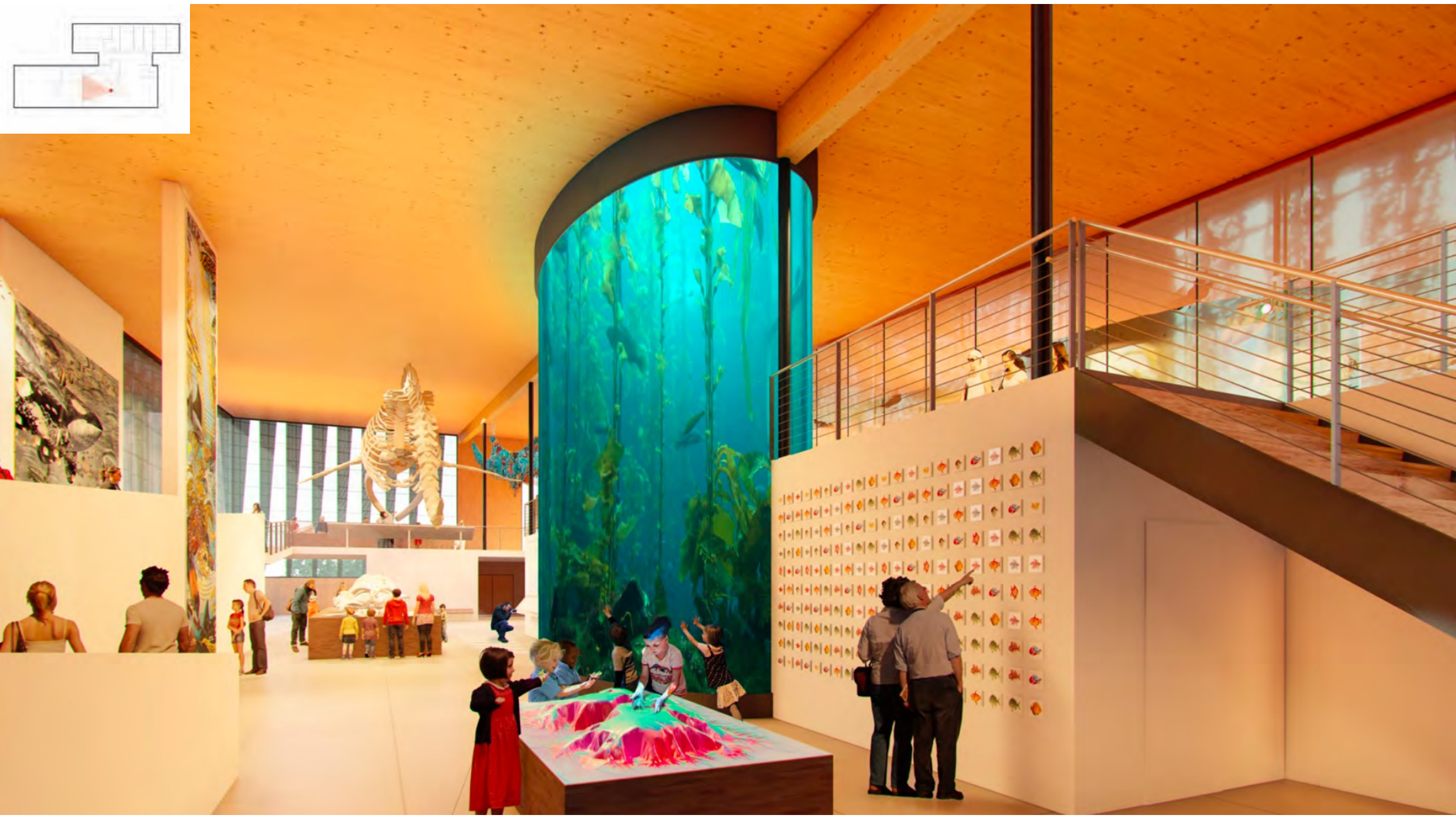
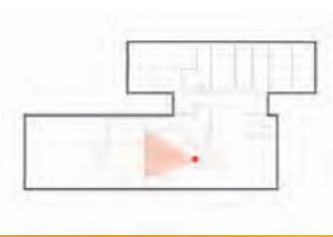
## Ocean Science Center Conceptual Designs

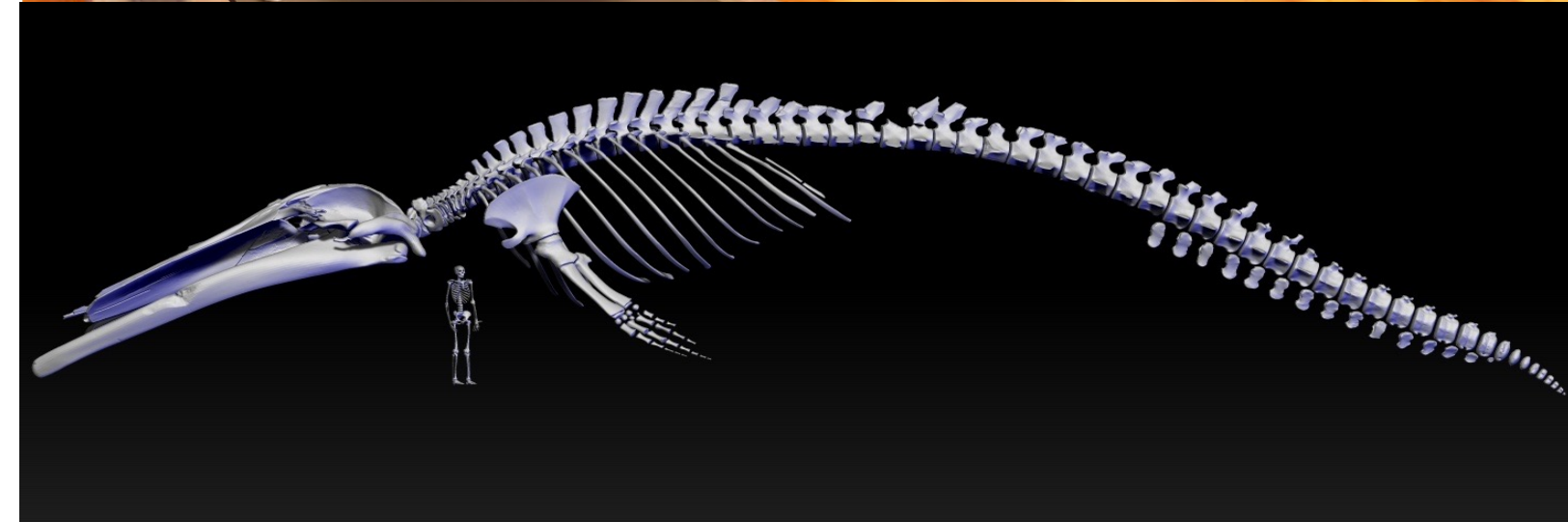






| <b>ADMIN</b>                                      |   |       |               |
|---|---|-------|---------------|
| admin offices                                     | 7 | 100   | 700           |
| admin storage                                     | 1 | 300   | 300           |
| conference room                                   | 1 | 400   | 400           |
| collab.   | 1 | 400   | 400           |
| library   | 1 | 200   | 200           |
| security  | 1 | 200   | 200           |
| <b>Subtotal</b>                                   |   |       | <b>2,200</b>  |
| <b>CORE</b>                                       |   |       |               |
| Lobby + Reception                                 | 1 | 1600  | 1600          |
| Lobby Storage                                     | 1 | 150   | 150           |
| Gift Shop   | 1 | 550   | 550           |
| GS Storage  | 1 | 200   | 200           |
| Restrooms   | 2 | 200   | 400           |
| Café  | 1 | 2000  | 2000          |
| Prep Kitchen                                      | 1 | 500   | 500           |
| <b>Subtotal</b>                                   |   |       | <b>5,400</b>  |
| <b>EXHIBIT</b>                                    |   |       |               |
| Exhibit Space                                     | 1 | 6,500 | 6,500         |
| Mezzanine   | 1 | 4,500 | 4,500         |
| Skeleton Exhibit (included in above)              |   |       |               |
| Aquaria (included in above)                       |   |       |               |
| Multi-Purpose Room                                | 1 | 1900  | 1900          |
| <b>Subtotal</b>                                   |   |       | <b>12,900</b> |
| <b>SUPPORT</b>                                    |   |       |               |
| Backup Generator                                  | 1 | 400   | 400           |
| Electronics Shop                                  | 1 | 500   | 500           |
| Exhibit and Lab Support                           | 1 | 600   | 600           |
| <b>Subtotal</b>                                   |   |       | <b>1,500</b>  |
| <b>LABS</b>                                       |   |       |               |
| Dry Labs(s)                                       | 1 | 700   | 700           |
| Wet Lab(s)  | 1 | 800   | 800           |
| Seawater Treatment                                | 1 | 600   | 600           |
| Maker Space                                       | 1 | 600   | 600           |
| Teaching Lab                                      | 1 | 800   | 800           |
| Specimen Storage (under ramp and in exhibit hall) |   |       |               |
| <b>Subtotal</b>                                   |   |       | <b>3,500</b>  |
| <b>TOTAL</b>                                      |   |       | <b>25,500</b> |









2021 Fund-a-Need

# La-BONE-atory

---

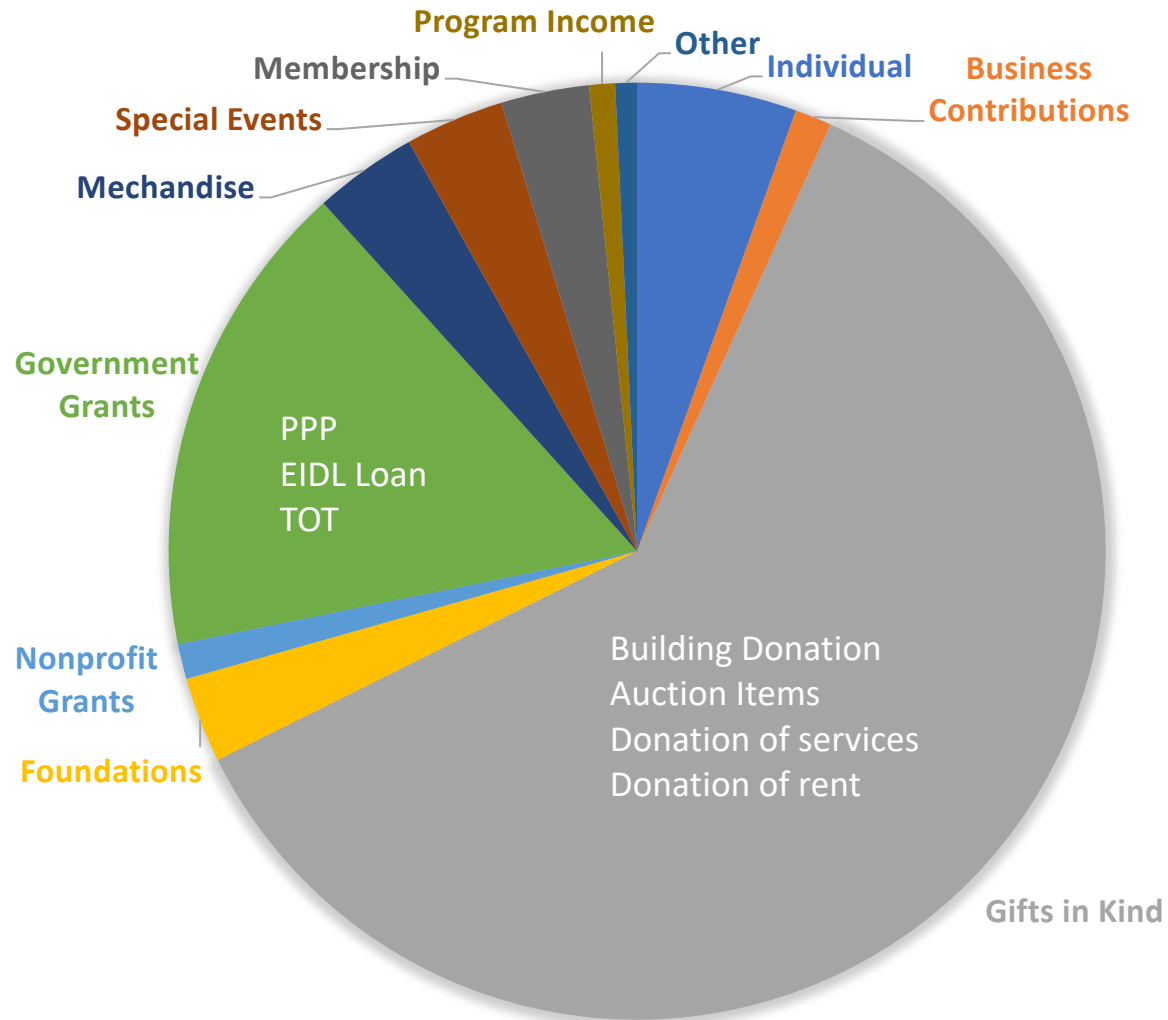


# OSC Design Next Steps: EDA Grant

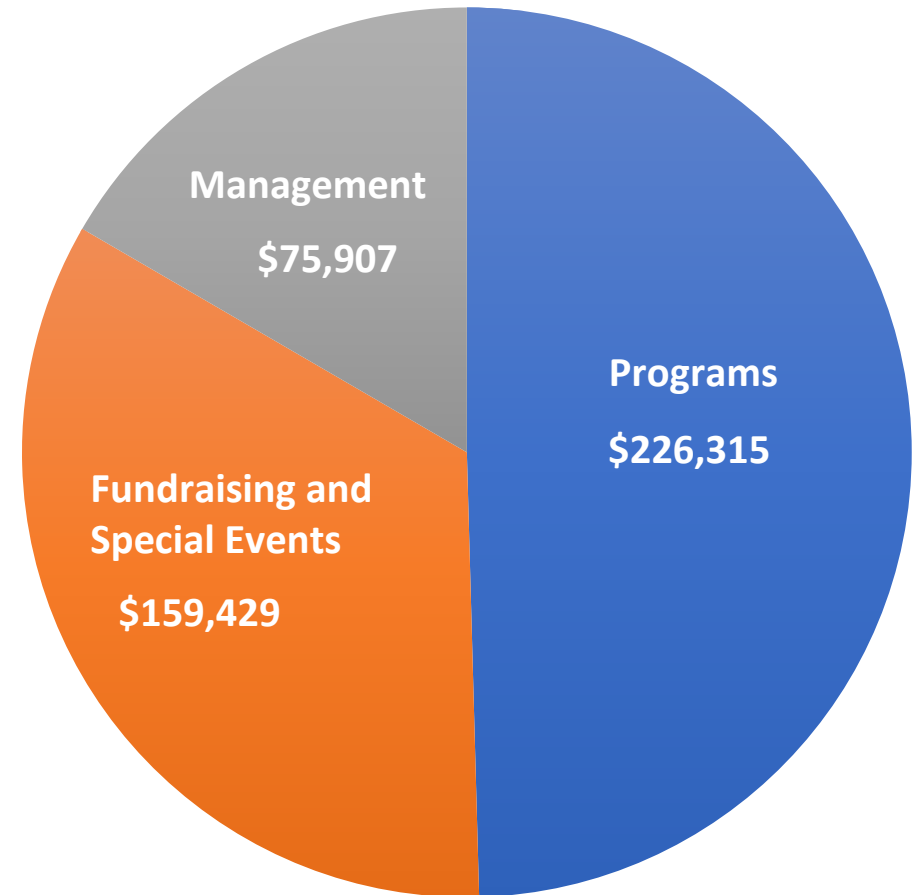
- Schematic Design (30% design)
- Exhibit Design (Giant kelp tank, Dome, Blue Whale)
- NEPA/CEQA
- Partnership with West Business Development Center
  - OSC Business Plan
  - Blue Economy Regional Strategy



# Income: \$1,344,033



# Expense: \$456,651





# Thank You!

[www.noyocenter.org](http://www.noyocenter.org)

**Sheila Semans**  
**Executive Director**  
[sheila@noyocenter.org](mailto:sheila@noyocenter.org)