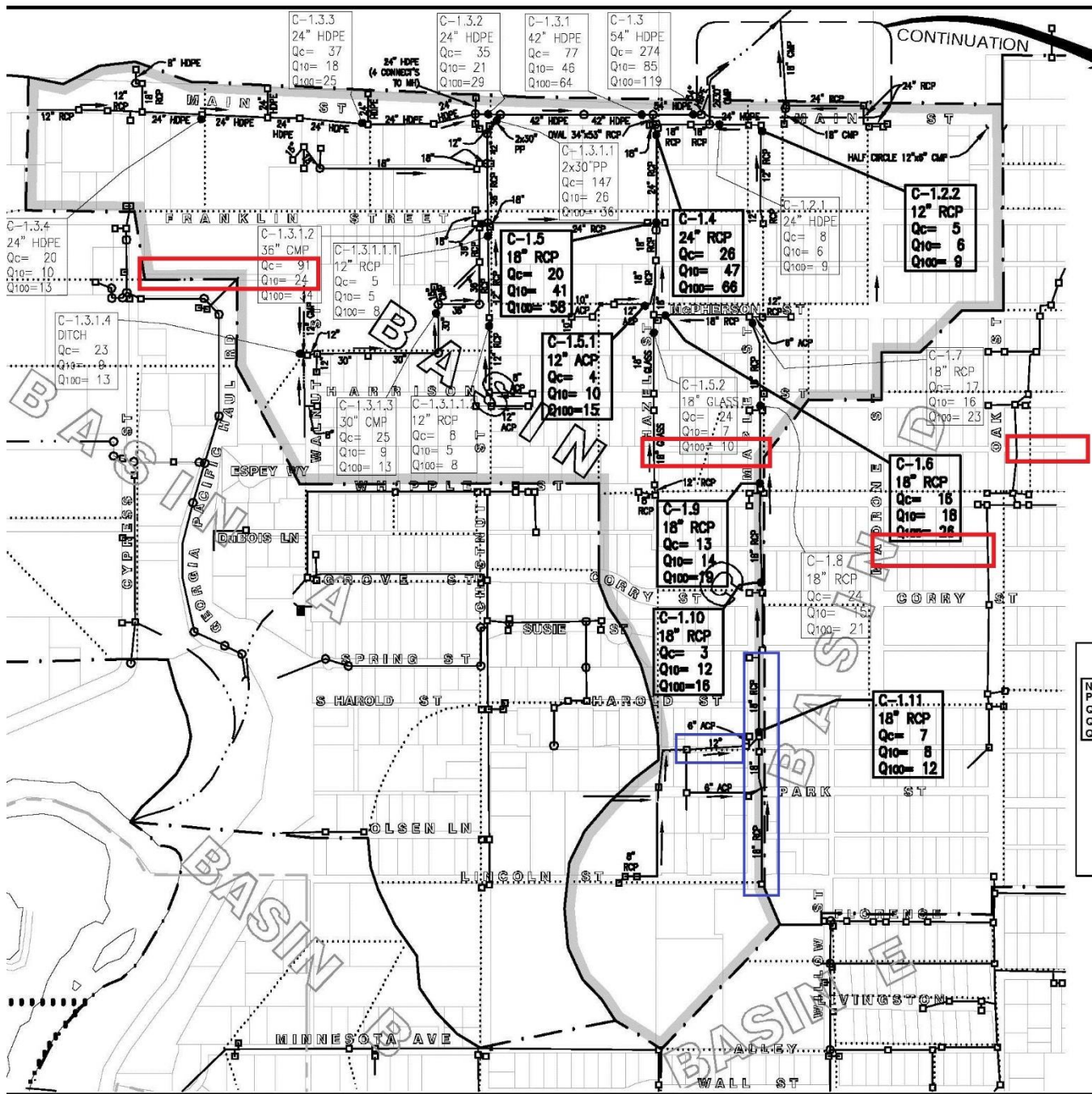


2020 Alleys for Rehabilitation

**& the Maple Street
Storm Drain
Conditions**

- 1. Alley S300G; the Residential Maple St. Mess**
- 2. Alley N102G; the Short-but-Severe Residential Rut**
- 3. Alley S600E; the Commercial Cut-Through**
- 4. Alley S100H; the Commercial RV Roller-Coaster**





- All four alleys were “rated for the highest priority for improvement” in the 2011 Alley Master Plan
- All of these alleys have been internally logged and tracked due to high number of on-going complaints and request for pothole services
- Three of the four alleys were selected for nearness to the existing project (i.e. their proximity) to the Maple Street Storm Drain Repair project
- The four alleys are shown in red and the Maple St storm drain project is shown in blue on the map.





1. Alley S300G; the Residential Maple St. Mess

Alley S300G; is a Residential type 2 improvement, located between S Harrison St. and S. Whipple St. from Maple to Hazel.





1. Alley S300G; the Residential Maple St. Mess





2. Alley N102G; the Short-but- Severe Residential Rut

Alley N102G; a Residential type 1 improvement, located between N Harrison St. and N Whipple St. from Alder to Oak.



2. Alley N102G; the Short-but- Severe Residential Rut





08/26/2019

3. Alley S600E; the Commercial Cut-Through

Alley S600E; is a Commercial/Multifamily (MF) type improvement, located between S Franklin St. and the GP Haul Rd. from Walnut to Cypress.

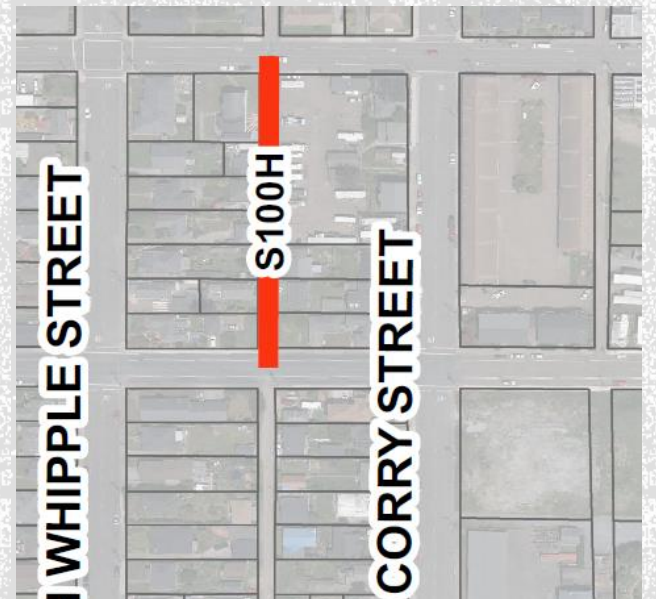


3. Alley S600E; the Commercial Cut-Through



4. Alley S100H; the Commercial RV Roller-Coaster

Alley S100H; a Commercial type 2 improvement, located between S Whipple St. and S Corry St. and Oak and Madrone.



4. Alley S100H; the Commercial RV Roller-Coaster

Alley S100H; a Commercial type 2 improvement, located between S Whipple St. and S Corry St. and Oak and Madrone.





Maple Street Section and Storm Drain Conditions



Maple Street Section and Storm Drain Conditions



Alley S300K a section of the programmed Maple Street Component

