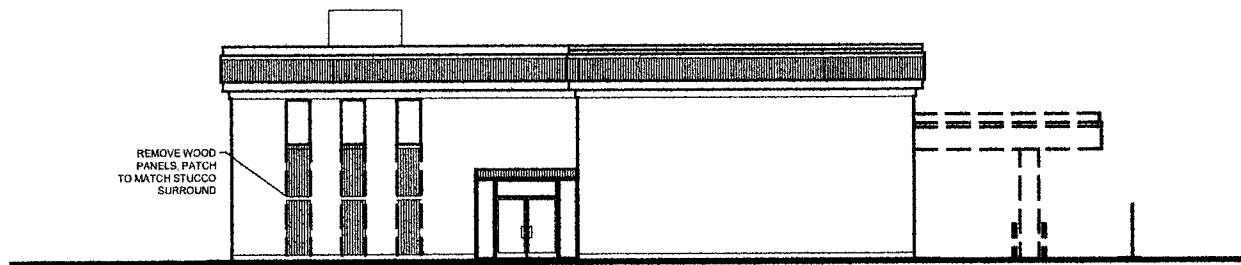
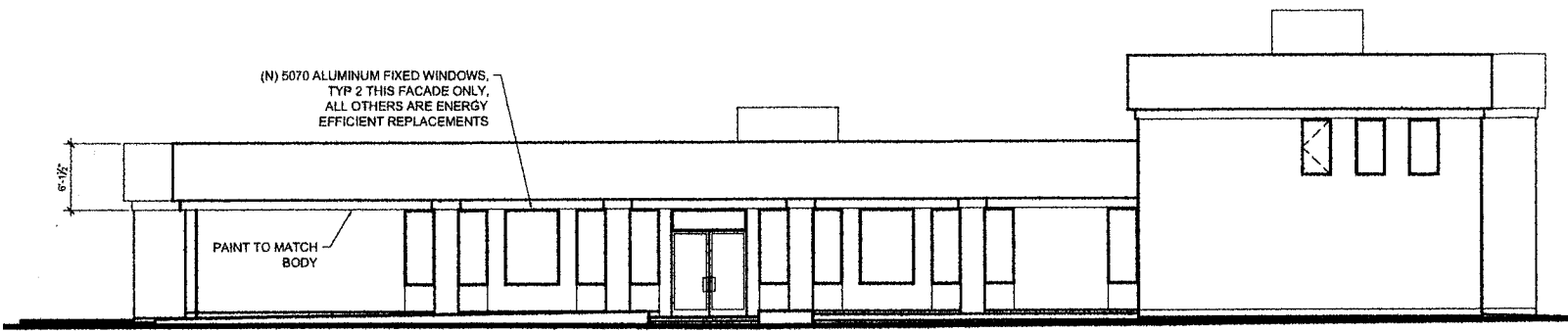


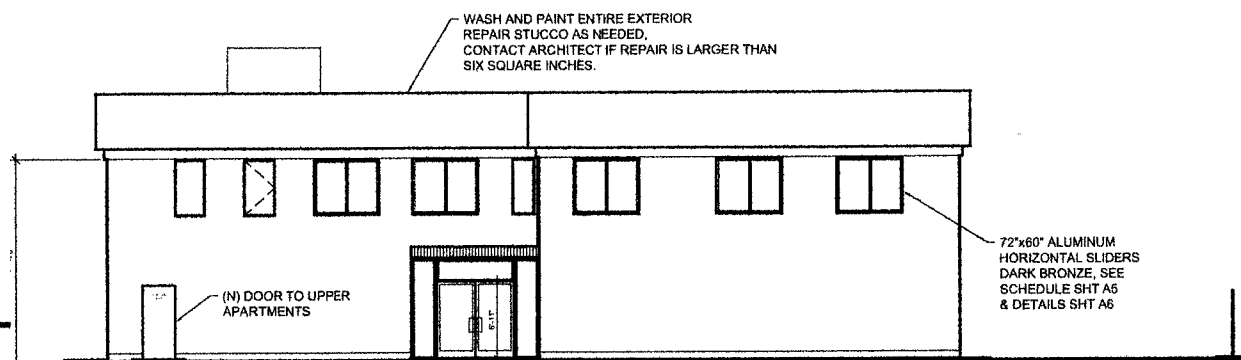
**(E) WEST ELEVATION**  
 SCALE: 1/10" = 1'-0"



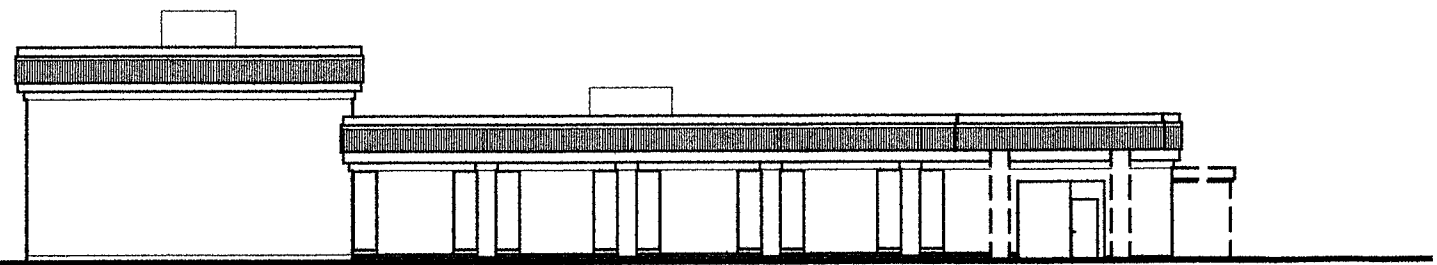
**(E) SOUTH ELEVATION**  
 SCALE: 1/10" = 1'-0"



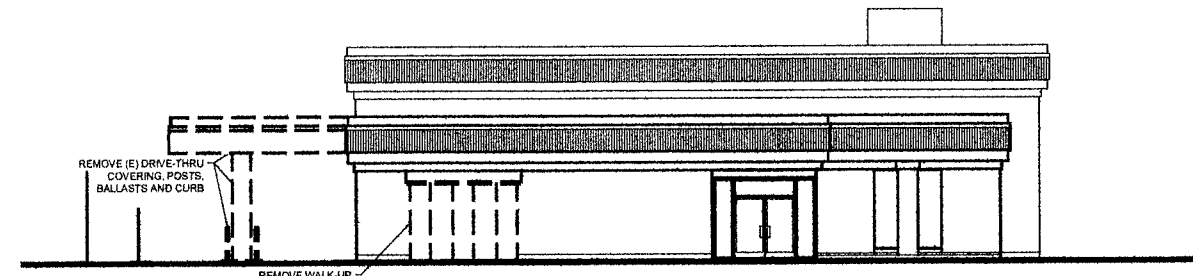
**(N) WEST ELEVATION**  
 SCALE: 1/8" = 1'-0"



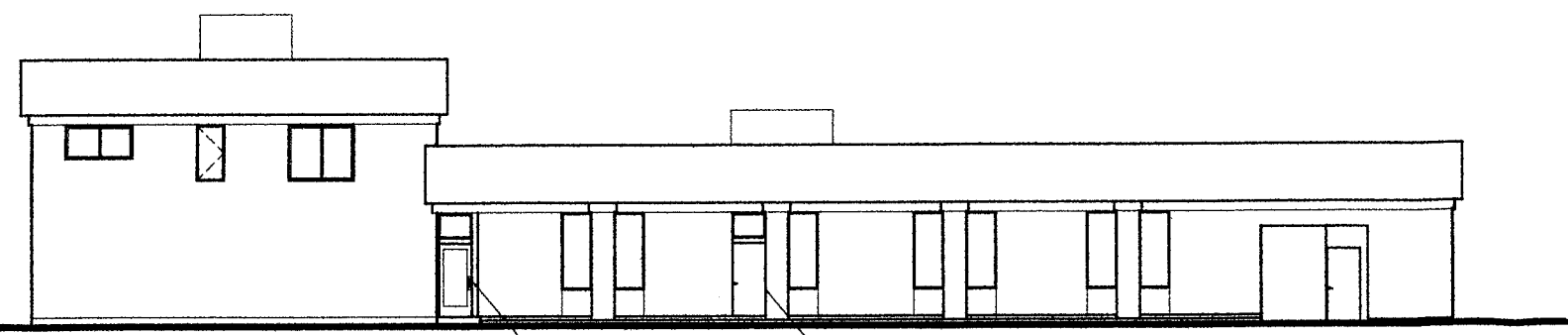
**(N) SOUTH ELEVATION**  
 SCALE: 1/8" = 1'-0"



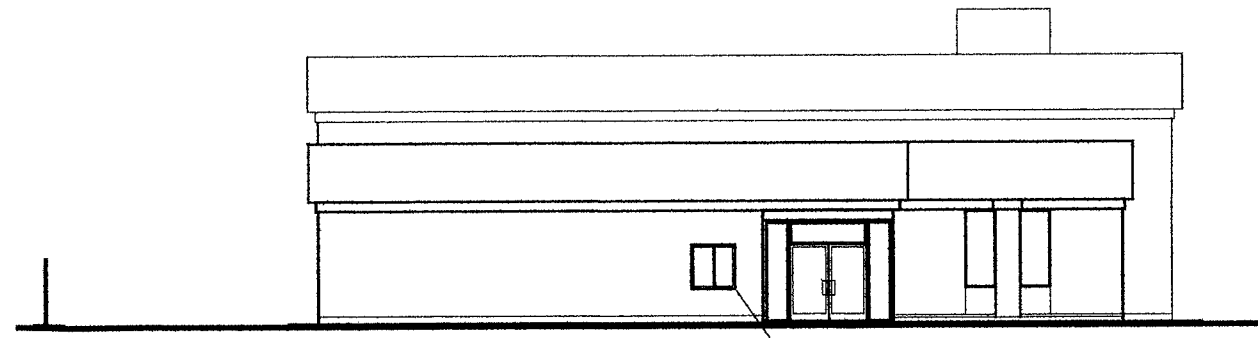
**(E) EAST ELEVATION**  
 SCALE: 1/10" = 1'-0"



**(E) NORTH ELEVATION**  
 SCALE: 1/10" = 1'-0"



**(N) EAST ELEVATION**  
 SCALE: 1/8" = 1'-0"



**(N) NORTH ELEVATION**  
 SCALE: 1/8" = 1'-0"

REVISION	BY

NOTES

City of Fort Bragg  
Received

DEC 27 2023

REMODELING PLANS FOR:

**PAPA BEAR'S PIZZA**  
 228 N. MAIN ST.  
 FORT BRAGG, CA  
 95437

A.P. #008-153-28-00

DATE	December 22, 2023
SCALE	AS NOTED
DRAWN BY	KBG
CHECKED BY	POB

**EXTERIOR ELEVATIONS**