



AMERICAN CHILLER SERVICE, INC.
 WWW.AMERICANCHILLER.COM

**Large Tonnage Air
 Conditioning Specialists**

CA Lic. No. 605046
 NV Lic. No. 0035255

March 14, 2023

Proposal

C.V. Starr Community Center
 300 S Lincoln St.
 Fort Bragg, CA 95437

Quote # 61209

Paul:

Per your request we are pleased to offer our bid for mechanical services at the subject location. All work is quoted for labor to be performed M-F during normal business hours.

Equipment Covered:

- 2) Raypak hot water heaters M/N: WH1-0400
- 1) Flo-Fab storage tank M/N: RLU-4274V

Scope of Work:

- Coordinate work with onsite personnel
- Coordinate lock out and tag out of all potential energy sources
- Customer to provide forklift and or grade all equipment for rigging of items to be replaced
- Demo and remove two Raypak boilers and discard, electrical and controls to be set aside
- Demo and remove piping and pumps needed for prep of new piping configuration
- Demo and remove hot water holding tank and discard
- Set/mount new boilers and new 534-gallon hot water holding tank
- Install new piping and piping accessories needed to tie in new boilers to existing system
- Install new piping and piping accessories needed to tie in new 534-gallon hot water storage tank
- Run new electrical and controls as needed to new boilers and terminate connections
- Run new sensors and control accessories needed between new boilers and new storage tank
- Reinsulate new piping and new 534-gallon hot water holding tank
- Start, test, and ensure proper operation of domestic hot water loop
- Provide written reports and recommendations on all findings

Total Cost:

\$148,209.00*

Thank you for the opportunity to quote this service, we look forward to working with you!

***Exclusions- Mechanical or structural engineering and any permits or associated permit fees**

Respectfully,
 American Chiller Service, Inc.

Hugo Chacon

Accepted By:

 C.V. Starr Community Center

(The Terms and Conditions attached form an integral part of this agreement and are expressly incorporated herein)

Sacramento	11328 Sunrise Gold Circle, Rancho Cordova CA 95742	Phone: (916)457-7800	Fax: (916)731-8100
Bay Area	743 Thornton Street, San Leandro CA 94577	Phone: (510)686-1111	Fax: (510)686-1234
Modesto	931 Reno Ave., Suite L, Modesto CA 95351	Phone: (209)557-0111	Fax: (209)557-0123
Reno / Tahoe	5580 Mill Street, Suite 400, Reno NV 89502	Phone: (775)322-9900	Fax: (775)322-9929
North Bay	1180 Holm Road, Suite C, Petaluma CA 94954	Phone: (707)304-5822	Fax: (707)304-5825
Mailing Address	P.O. Box 1887 Rancho Cordova, CA 95741-1887	Toll Free: (800)916-2445	
	Website: www.americanchiller.com	E-Mail: info@americanchiller.com	

10. Customer shall be responsible for all costs, expenses, damages, fines, penalties, claims and liabilities associated with or incurred in connection with any hazardous materials or substances, including but not limited to asbestos, upon, beneath, about or inside Customer's equipment or property.

Title to, ownership of, and legal responsibility and liability for any and all such hazardous materials or substances, shall at all times remain with Customer. Customer shall be responsible for the removal, handling and disposal of all hazardous materials and substances in accordance with all applicable Governmental Regulations. Customer shall defend, indemnify, reimburse and hold harmless American Chiller Service and its officers, directors, agents, and employees from and against any and all claims, damages, costs, expenses, liabilities, actions, suits, fines and penalties (including without limitation, attorneys' fees and expenses) suffered or incurred by any such indemnified parties, based upon, arising out of or in any way relating to exposure to, handling of, or fees and expenses) suffered or incurred by any such indemnified parties, based upon, arising out of or in any way relating to exposure to, handling of, or disposal of any hazardous materials or substances, including but not limited to asbestos, in connection with the services performed hereunder. American Chiller Service shall have the right to suspend its work at no penalty to American Chiller Service until such products or materials and the resultant hazards are removed. The time for completion of the work shall be extended to the extent caused by the suspension and the contract price equitably adjusted. American Chiller Service reserves the right to engage others in a subcontractor status to perform the work hereunder.

11. Customer agrees to provide American Chiller Service personnel with the usual required utilities (water, electricity, compressed air, etc.) and special tools and equipment normally used for such services unless restricted specifically in the quote. Customer agrees to ensure that sufficient service access space is provided. American Chiller Service shall not be held liable for failure or damage to any equipment caused by power interruptions, single phasing, phase reversal, low voltage, or other deficiencies beyond the control of American Chiller Service.
12. This agreement does not include responsibility for design of the system (unless specifically included), obsolescence, electrical power failures, low voltage, burned-out main or branch fuses, low water pressure, vandalism, misuse or abuse of the system(s) by others (including the Customer), negligence of the system by others (including the Customer), failure of the Customer to properly operate the system(s), or other causes beyond the control of American Chiller Service.
13. In the event that American Chiller Service is required to make any repairs and/or replacements or emergency calls occasioned by the improper operation of the equipment covered hereby, or any cause beyond American Chiller Service's control, Customer shall pay American Chiller Service for the charges incurred in making such repairs and/or replacements or emergency calls in accordance with the current established American Chiller Service rates for performing such services.
14. American Chiller Service shall not in any event be liable for failure to perform or for delay in performance due to fire, flood, strike or other labor difficulty, act of God, act of any Governmental Authority or of Customer, riot, war, embargo, fuel or energy shortage, wrecks or delay in transportation, inability to obtain necessary labor, materials, or equipment from usual sources, or due to any cause beyond its reasonable control. In the event of delay in performance due to any such cause, the date of delivery or time of completion will be extended by a period of time reasonably necessary to overcome the effect of such delay. If the materials or equipment included in this Proposal become temporarily or permanently unavailable for reasons beyond the control of American Chiller Service, American Chiller Service shall be excused from furnishing said materials or equipment and be reimbursed for the difference between cost of materials or equipment unavailable and the cost of an available reasonable substitute.
15. AMERICAN CHILLER SERVICE SHALL NOT IN ANY EVENT BE LIABLE TO THE CUSTOMER OR TO THIRD PARTIES FOR ANY INCIDENTAL, CONSEQUENTIAL, INDIRECT OR SPECIAL DAMAGES, INCLUDING BUT NOT LIMITED TO, LOSS OF PRODUCTION, LOSS OF USE OR LOSS OF PROFITS OR REVENUE ARISING FROM ANY CAUSE WHATSOEVER INCLUDING, BUT NOT LIMITED TO ANY DELAY, ACT, ERROR OR OMISSION OF AMERICAN CHILLER SERVICE. IN NO EVENT WILL AMERICAN CHILLER SERVICE'S LIABILITY FOR DIRECT OR COMPENSATORY DAMAGES EXCEED THE PAYMENT RECEIVED BY AMERICAN CHILLER SERVICE FROM CUSTOMER UNDER THE INSTANT AGREEMENT.
16. American Chiller Service extends the manufacturer's warranties on all parts and materials and warrants labor to meet industry standards for a period of thirty (30) days from the date performed, unless a longer duration is expressly stated elsewhere in this Agreement. American Chiller Service expressly limits its warranty on Customer's Equipment to cover only that portion of Equipment which had specific service work done by American Chiller Service. These warranties do not extend to any Equipment or service which has been repaired by others, abused, altered, or misused, or which has not been properly maintained. THESE WARRANTIES ARE IN LIEU OF ALL OTHER WARRANTIES, EXPRESSED OR IMPLIED, INCLUDING, BUT NOT LIMITED TO, THOSE OF MERCHANTABILITY AND FITNESS FOR SPECIFIC PURPOSE, WHICH ARE HEREBY SPECIFICALLY DISCLAIMED.
17. Each of us agrees that we are responsible for any injury, loss, or damage caused by any negligence or deliberate misconduct of our employees or employees of our subcontractors. If any of our employees or those of our subcontractors, cause any injury, loss or damage in connection with performing their duties under this agreement, the responsible party will pay for all costs, damages, and expenses, which arise. Each of us agrees to defend and hold harmless the other party, its officers, directors and employees, from and against all claims, damages, losses and expenses, including but not limited to attorney's fees and court costs, arising out of or resulting from the performance of work hereunder, to the extent that such claim, damage, loss, or expense is caused by an active or passive act or omission of the indemnifying party or anyone directly or indirectly employed by that party, or anyone for whose acts that party may be liable.
18. This Agreement shall be binding upon and inure to the benefit of each party's respective successors, assigns and affiliates. This Agreement is governed by and construed in accordance with the laws of the State of California.

Job: _____

Engineer: _____

Contractor: _____

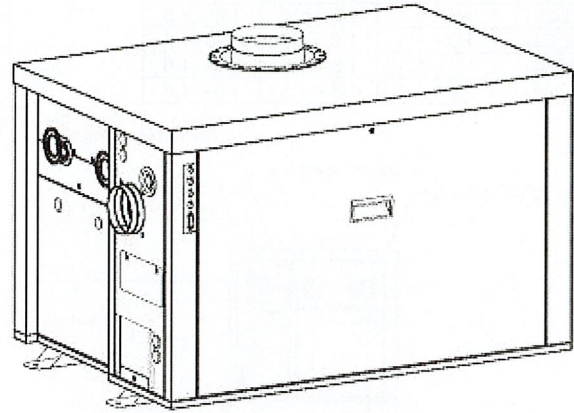
Prepared By: _____ Date: _____

Model: _____ Indoor/Outdoor: _____ MBH Input: _____

Hi Delta SS™ - Type WH

Water Heaters
Models HD101-HD401

- TruSeal® Direct Vent**
- Sealed Combustion Chamber**
- 100% Factory Fire Tested**
- Efficiency: 85%**
- Maximum Outlet Temperature: 200°F**
- Minimum Non-condensing Inlet Temperature: 105°F**
- Thermal Shock Proof Heat Exchanger**
- Limited Twenty-year Thermal Shock Warranty**
- Limited Five-year Heat Exchanger Warranty**
- Status Display LED's**
- PolyTuf Powder Coated Cabinet**
- No Combustible Floor Shield Required**
- Fan-assisted – Ultra Low NOx (<20 ppm Nat.)**
- Patented Burner Security Blanket**



Patent No. 7,044,124



Proudly Assembled in the USA

Heat Exchanger

- HLW Stamp
- Headers
 - Bronze - Standard
 - Cast Iron, Glass-lined – Option A-2
- ASME Inspected and Stamped 160 PSIG Working Pressure
- National Board Approved
- Finned Tubing
 - Copper - Standard
 - Cupro Nickel – Option A-3
- ASME Steel Tube Sheet
- Silicone High Temp O-Rings
- ASME Pressure Relief Valve
 - 125 PSIG – Standard
 - 150 PSIG – Option A-16
- Temperature and Pressure Gauge (shipped loose)
- Flow Switch – Mounted
- Left-hand Water (Standard)
- Right-hand Water - Optional A-6

Controls

- 120V, 60Hz, 1Ø Power Supply
- 120/24V 60Hz Transformer
- 100% Shutoff/Lockout
- Hot Surface Ignition
- Remote Flame Sensor
- Fixed High Limit Control, Manual Reset
- On/Off Power Switch
- Blocked Vent Pressure Switch
- Combustion Air Proving Switches (2)
- Economaster Style Pump Relay

Gas Train

- 4" WC Minimum Pressure
- Combination Valve
- Firing Mode
 - On/Off (WH1) – Standard
 - 2 Stage (WH3) – Optional
- Fuel
 - Natural Gas
 - Propane Gas
- Design Certified - ANSI Z21.10.3/CSA 4.3

Burner

- Two-stage Capable
- Ultra-Low NOx (<20 ppm Nat.)

Construction

- Indoor/Outdoor Construction
- Slide-Out Controls Tray
- Front Controls Enclosed
- PolyTuf Powder Coat Finish
- TruSeal® Direct Vent
- Integral Combustion Air Filter
- CSA Low Lead Certified ≤ .25% Lead

Venting

- Vent Termination Cap
 - Outdoor – Option D-11
 - Indoor, Horizontal – Option D-15
 - Indoor, Vertical – Option D-20
- Combustion Air - Ducted
 - Air Intake Elbow – Option D-16
- Extractor – Optional
 - By Others
 - Not Required

Temperature Controls (Optional)

- B-2 1-Stage Controller, 100-200°F (Loose)
- B-3 2-Stage Controller, 100-200°F (Loose)
- B-26 TempTracker Digital Controller, 2-Stage (Mtd)
- B-21 TempTracker Digital Controller, 4-Stage (Loose)
- Remote Controller
- By others:

Options

- I-1 Adjustable High Limit Control, Auto Reset
- P-7 Pump: 1/8 HP, 120V, 1Ø, 60 Hz
 - Bronze only
 - Mounted
 - Loose
- P-__ Cold Water Protection (See 1000.19)
- S-__ Low and High Gas Pressure Switches, Manual



Raypak
A Rheem Company



Submittal Data Information

101-035

Model 0012 Cartridge Circulator

Effective: January 12, 2015

Supersedes: May 31, 2013

Job: _____ Engineer: _____ Contractor: _____ Rep: HTE

ITEM NO.	MODEL NO.	IMP. DIA.	G.P.M.	HEAD/FT.	H.P.	ELEC. CHAR.
Boiler Pump	0012-SF4	N/A			1/8	115/1/60

Features

- Exclusive ACB Anti-Condensate Baffle with Ambient Air Flow-Protects Motor Windings against Condensate Buildup
- High Velocity Performance-Compact Design
- Quiet, Efficient Operation
- Direct Drive-Low Power Consumption
- Unique Replaceable Cartridge Design-Field Serviceable
- Self Lubricating
- No Mechanical Seal
- Unmatched Reliability-Maintenance Free
- Universal Flange to Flange dimensions
- Cast Iron or Stainless Steel Construction

Materials of Construction

Casing (Volute):.....Cast Iron or Stainless Steel
 Stator Housing:.....Aluminum
 Cartridge:.....Stainless Steel
 Impeller:.....Non-Metallic
 Shaft:.....Ceramic
 Bearings:.....Carbon
 O-Ring & Gaskets:.....EPDM

Model Nomenclature

F – Cast Iron, Flanged
 SF – Stainless Steel, Flanged

Performance Data

Max. Flow: 52 GPM
 Max. Head: 14.5 Feet
 Min. Fluid Temperature: 40°F (4°C)
 Max. Fluid Temperature: 230°F (110°C)
 Max. Working Pressure: 150 psi
 Connection Sizes: 1-1/4", 1-1/2" or 2" Flanged

Certifications & Listings

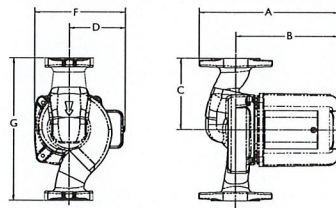


Application

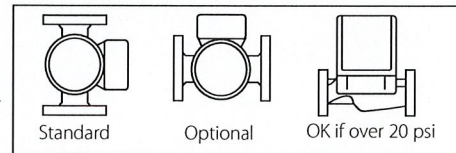
The Taco 0012 is specifically designed for high flow/medium head applications in large residential and light commercial systems. Ideal for large BTUH Boilers, 2" recirculation loops, Primary/Secondary loops, commercial water heaters and light commercial heating and cooling systems. The Stainless Steel 0012 can be used on open loop systems. The unique replaceable cartridge contains all of the moving parts and allows for easy service instead of replacing the entire circulator. Universal flange to flange dimensions and orientation allows the 0012 to easily replace other models. Compact, low power consumption design makes it ideal for high-efficiency jobs. The 0012-F4 is a direct replacement for the HV Series and the 0012-F4-1 is a direct replacement for the 2" Series using existing flanges.

Pump Dimensions & Weights FLANGES INCLUDED

Models	Casing	Flange Size	Flange Orientation	A		B		C		D		F		G		Ship Wt.	
				in.	mm	in.	mm	in.	mm	in.	mm	in.	mm	in.	mm	lbs.	Kg
0012-F4	Cast Iron	1-1/2"	S	8-5/8	219	6-3/8	162	4-1/4	108	3-5/16	84	5-1/2	140	8-1/2	216	13.0	5.9
0012-F4-4	Cast Iron	1-1/2"	R	8-1/16	205	6-3/8	162	4-1/4	108	3-5/16	84	6	152	8-1/2	216	13.0	5.9
0012-SF4	St. Steel	1-1/2"	S	8-5/8	219	6-3/8	162	4-1/4	108	3-5/16	84	5-1/2	140	8-1/2	216	13.0	5.9
0012-SF4-S	St. Steel	1-1/2"	R	8-1/16	205	6-3/8	162	4-1/4	108	3-5/16	84	6	152	8-1/2	216	13.0	5.9
0012-F4-1	Cast Iron	2"	S	9	229	6-3/8	162	4-1/4	108	3-5/16	84	5-1/2	140	8-1/2	216	13.0	5.9
0012-SF4-1	St. Steel	2"	S	9	229	6-3/8	162	4-1/4	108	3-5/16	84	5-1/2	140	8-1/2	216	13.0	5.9



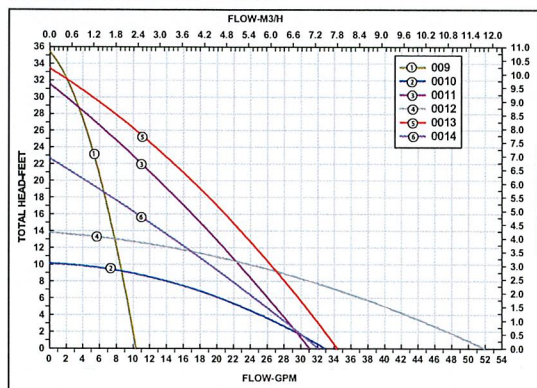
Mounting Positions



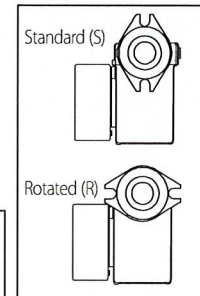
Electrical Data

Model	Volts	Hz	Ph	Amps	RPM	HP
All Models	115	60	1	1.33	3250	1/8
Motor Type	Permanent Split Capacitor Impedance Protected					
Motor Options	220/50/1, 220/60/1, 230/60/1, 100/110/50/60/1					

Performance Field — 60Hz



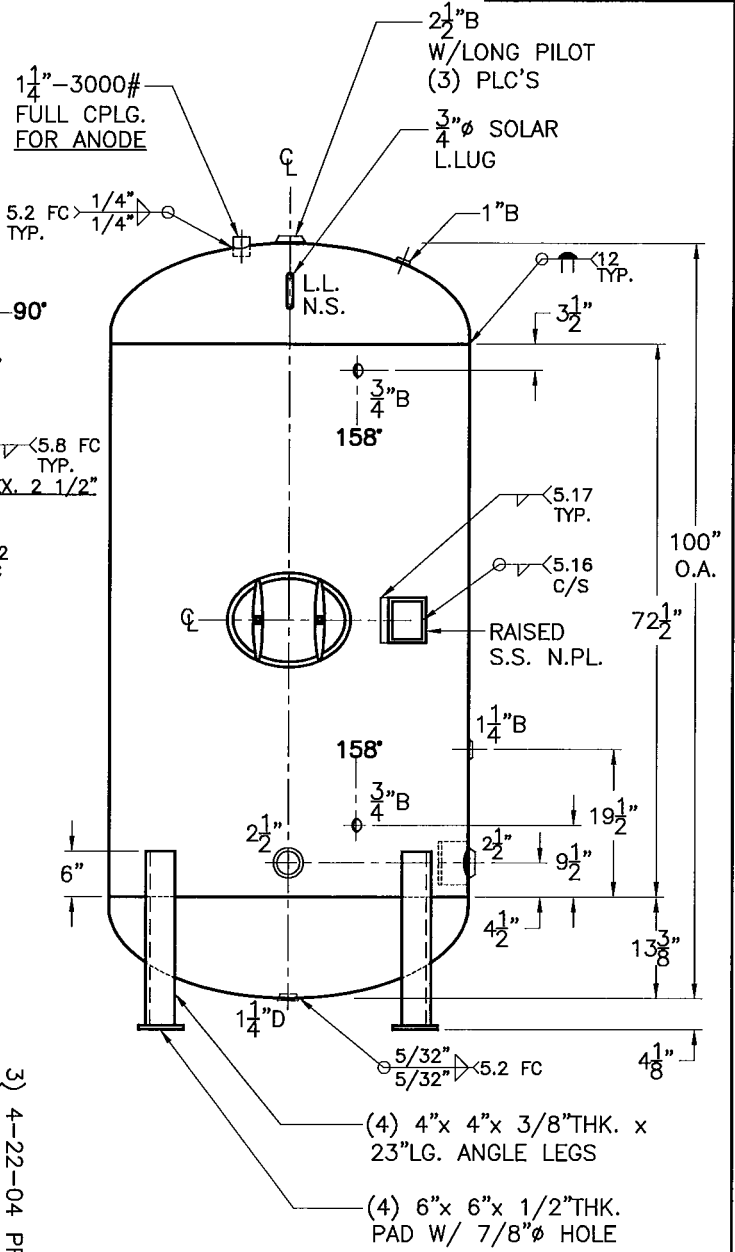
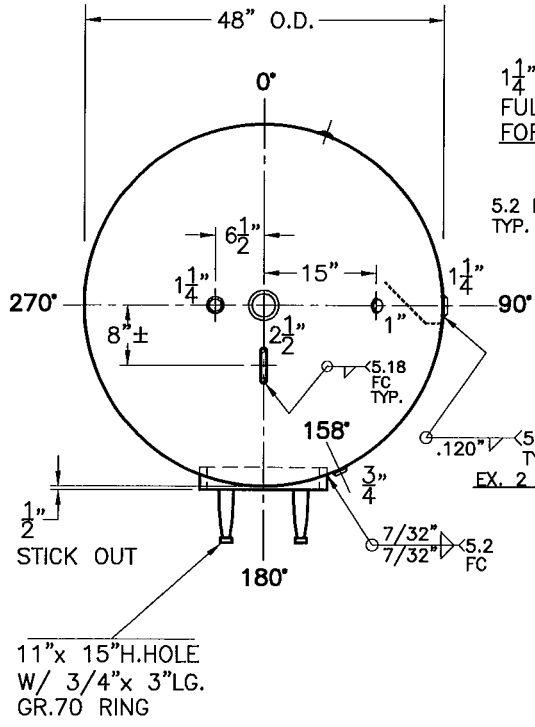
Flange Orientation



Taco, Inc., 1160 Cranston Street, Cranston, RI 02920 | Tel: (401) 942-8000 | FAX: (401) 942-2360
 Taco (Canada), Ltd., 8450 Lawson Road, Suite #3, Milton, Ontario L9T 0J8 | Tel: (905) 564-9422 | FAX: (905) 564-9436
 Visit our web site: www.TacoComfort.com | Printed in USA | ©2015 Taco, Inc.



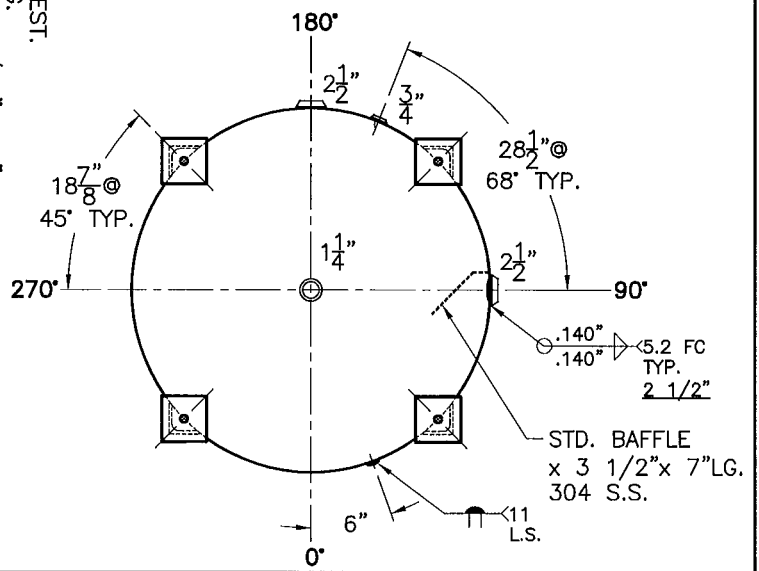
JOB No. _____
DATE: _____



SHELL / HEADS	
M.A.W.P.	160 PSIG. @ 210 °F
ASME SECTION	IV 2019
X-RAY	RT-NO / H.L.W.
GALLONS	712 WT. 1184 LBS.
SERIAL NO.	
N.B.	

NOTE: 1) SHIP LOOSE W/(1) 1 5/16" x 96" LG. FLEX. MAG. ANODE.
2) HYDRO @ 240 PSIG.
3) 4-22-04 PROOF TEST.

JOGGLE	.250" SA-455 2:1 S.E.
FOR:	HANSON STANDARD
VERT. WATER TANK.	
SURFACE AREA =	113.0 SQ. FT.
INSIDE:	GLASS LINED (5 MILS MIN.)
OUTSIDE:	S.BLAST AND PRIME
CAD-"B" UNDER "STD"-SERIES	
LEG-ZONE	4-15 KM.
BY: J.G.	SCALE: 3/4"=12"
ROY E. HANSON JR. MFG.	
LOS ANGELES, CA 90021	



AST SERIES | PRE-CHARGED (ASME) FOR POTABLE WATER | SUBMITTAL

File No: 37.53
Date: OCTOBER 19, 2015
Supersedes: 37.53
Date: MARCH 19, 2015

Job: _____ Representative: _____

_____ Order no.: _____ Date: _____

Engineer: _____ Submitted by: _____ Date: _____

Contractor: _____ Approved by: _____ Date: _____

DATA

Model no. ordered: _____ Qty: _____

Tag no.: _____ Charge pressure: _____ psi/kPa

ASME certification required: Yes No

Standard factory charge is 40 psi (276 kPa) unless otherwise specified.

MATERIALS OF CONSTRUCTION

Shell: Carbon steel

Liner: Polypropylene

System Connection: Stainless steel

Fixed Diaphragm: Butyl - FDA approved

MAXIMUM OPERATING CONDITIONS

Working temperature: 240°F (115°C)

Working pressure: 150 psi (1034 kPa)

NOTES

- For Domestic potable water systems & Draw down tanks for Pressure booster systems.
- Designed and constructed per ASME, section VIII, division.

TYPICAL SPECIFICATION

Furnish and install, as shown on the plans, Armstrong Model AST-_____ ASME pre-charged diaphragm Expansion Tank, stamped 150 psi (1034 kPa) working pressure. Each tank will be supplied with a heavy duty FDA approved butyl diaphragm. Tank sizes AST-20 to AST-210 shall be supplied with a ring base, lifting rings, and NPT system connection. An air charging valve connection (standard tire valve) shall be provided to facilitate adjusting precharge pressure to meet actual system conditions.