



## Quarterly Report on Sales Tax and Business Activity

### Top 25 Sales Tax Remitters

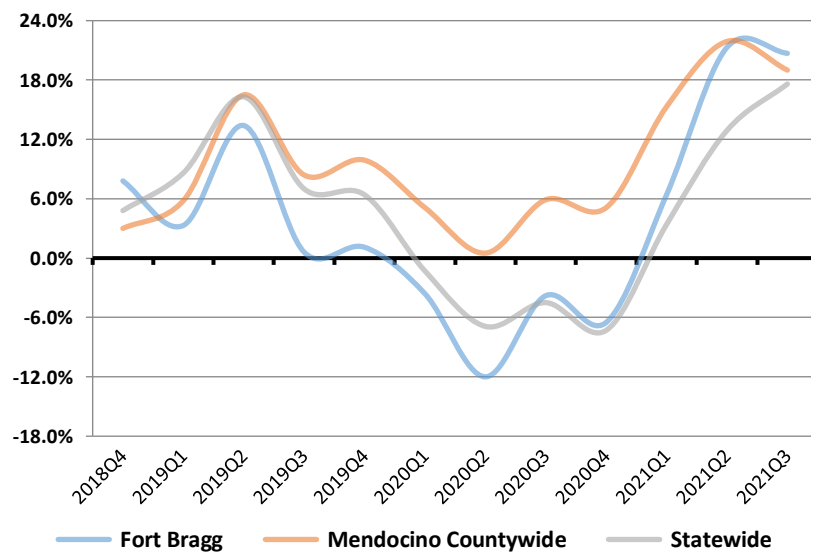
- ARCO AM/PM MINI MARTS
- BOATYARD TOBACCO
- CANCLINI TV & APPLIANCE
- CHEVRON SERVICE STATIONS
- CVS/PHARMACY
- DOLLAR TREE STORES
- GEO AGGREGATES
- HARVEST MARKET
- KEMPPE LIQUID GAS
- MCDONALD'S RESTAURANTS
- MENDO MILL & LUMBER COMPANY
- MENDOCINO COUNTY HORTICULTURE SUPPLY
- NOYO HARBOR INN
- O'REILLY AUTO PARTS
- REDWOOD COAST FUELS
- RINO SERVICE STATIONS
- RITE AID DRUG STORES
- ROSSI BUILDING MATERIALS
- SAFEWAY STORES
- SINCLAIR SERVICE STATIONS
- SPORT CHRYSLER-JEEP-DODGE
- TACO BELL
- THE BREWERY SHOP
- TRUE VALUE HARDWARE
- TWO SHORT SALES

### 3rd Quarter 2021 in Review

California sales tax cash receipts increased by 17.6% from the same quarter last year. In this jurisdiction sales tax cash receipts increased by 11.1% from the same quarter last year due to a increase of \$5,853,000 in Taxable Sales.

Cash Receipts	Quarter	Annual
<b>Fort Bragg</b>	11.1%	20.7%
<b>Mendocino Countywide Pool</b>	-9.5%	15.4%
<b>Mendocino Countywide</b>	5.6%	19.0%
<b>North Coast Region</b>	5.7%	16.6%
<b>Statewide</b>	17.6%	17.6%

### Annualized Percent Change in Sales Tax Cash Receipts



### Business Activity

- General Retail
- Food Products
- Transportation
- Construction
- Business To Business
- TOTAL LOCAL BUSINESS ACTIVITY**
- COUNTYWIDE POOL ACTIVITY**

Fort Bragg		North Coast		California	
Quarter	Annual	Quarter	Annual	Quarter	Annual
14.3%	19.1%	2.5%	12.0%	20.5%	12.7%
16.1%	17.0%	11.9%	-29.4%	24.3%	-0.3%
18.3%	13.8%	2.1%	8.5%	14.8%	8.7%
6.2%	15.4%	-1.5%	8.4%	1.5%	3.5%
23.5%	13.3%	10.0%	8.1%	5.1%	-1.2%
<b>14.8%</b>	<b>16.4%</b>	<b>3.9%</b>	<b>0.5%</b>	<b>14.6%</b>	<b>5.4%</b>
<b>-4.8%</b>	<b>16.2%</b>	<b>-3.4%</b>	<b>17.1%</b>	<b>0.5%</b>	<b>14.7%</b>



## News

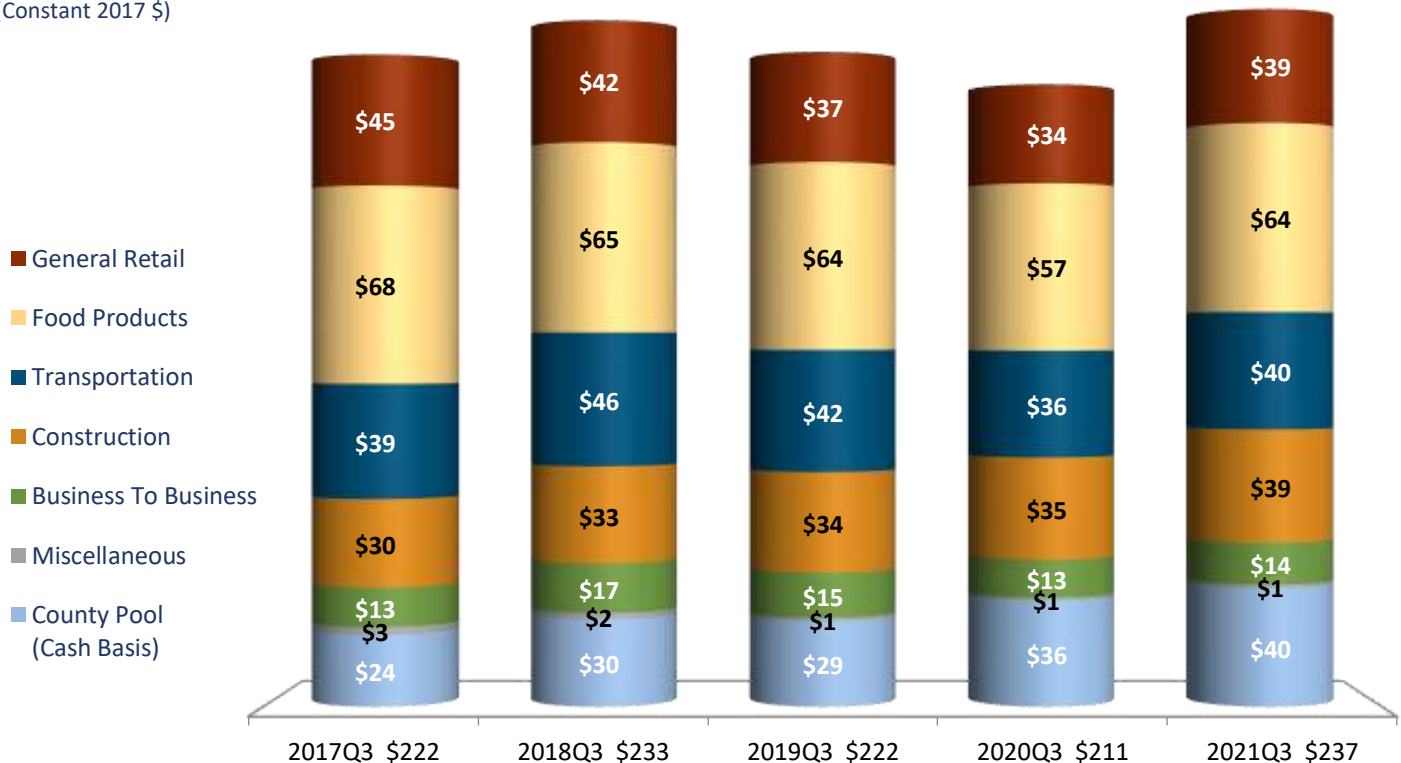
- Economic Activity:** Real Gross Domestic Product (GDP) grew at a seasonally adjusted annualized rate of 2.0% in the third quarter of 2021. Real GDP in Q3 2021 surpassed its Q4 2019 pre-pandemic peak by 1.4%. (BEA)
- Employment:** The U.S. unemployment rate fell by 0.6% to 4.6% in October of 2021 compared to August of 2021. Total U.S. nonfarm payroll employment increased by 531,000 (0.2%) in October of 2021. California's unemployment rate decreased to 7.3% in October, a slight .3% improvement from June of 2021. California's civilian employment increased by 201,500 (1.2%) in October of 2021 compared to June of 2021. (BLS, EDD)
- Personal Income:** U.S. personal income increased by 4.3% for the third quarter of 2021, compared to same quarter previous year. U.S. personal income for the year of 2021Q3 has increased by 6.4% compared to the 2020Q3 yearly personal income amount. (BEA)

## Fort Bragg

### Annual Per Capita Sales Tax

Adjusted for Inflation

(Constant 2017 \$)



**NORTH COAST: Quarterly Comparison of 2020Q3 and 2021Q3 (July through September Sales)**

	General Retail	Food Products	Transportation	Construction	Business To Bu.	Miscellaneous	Jul - Sep 2021 (2021Q3)	Jul - Sep 2020 (2020Q3)	% Chg	Gain	Gain	Decline	Decline
<b>LAKE COUNTY</b>													
LAKEPORT	2.5%	5.5%	1.8%	14.7%	4.2%	-12.0%	305,026	295,417	3.3%	Service Stations	Restaurants	Auto Sales - New	Food Markets
<b>MENDOCINO COUNTY</b>													
FORT BRAGG	14.3%	16.1%	18.3%	6.2%	23.5%	56.1%	478,803	416,910	14.8%	Restaurants	Service Stations	Furniture/Appliance	Light Industry
UKIAH	-4.2%	1.2%	-30.9%	0.3%	-3.8%	-6.4%	1,420,312	1,547,846	-8.2%	Restaurants	Bldg.Matls-Whsle	Auto Sales - New	Furniture/Appliance
WILLITS	-12.0%	8.8%	16.0%	-17.2%	-15.8%	-6.8%	390,457	388,046	0.6%	Service Stations	Restaurants	Florist/Nursery	Bldg.Matls-Retail
<b>SHASTA COUNTY</b>													
REDDING	5.4%	14.9%	6.3%	-2.1%	12.7%	8.0%	6,531,168	6,132,466	6.5%	Service Stations	Restaurants	Misc. Vehicle Sales	Auto Sales - Used

## FORT BRAGG

Sales Tax Net Cash Receipts: Two Advances Plus Clean-Up Payment

Last Year Cash Received > This Year Cash Received > Calendar Sales Quarter >	% CHANGE BY MONTH ENDED QUARTER						MOST RECENT FOUR QUARTERS TOTAL			
	Aug-19	Nov-19	Feb-20	May-20	Aug-20	Nov-20	Dec-19 thru	Dec-20 thru	\$ Chg	% Chg.
	Aug-20	Nov-20	Feb-21	May-21	Aug-21	Nov-21	Nov-20	Nov-21		
	20Q2	20Q3	20Q4	21Q1	21Q2	21Q3	2020Q3	2021Q3		
1 Mendocino County	-4.8%	11.7%	11.7%	55.8%	39.4%	14.5%	6,805,701	8,655,202	1,849,501	27.2
2 Ukiah	14.9%	18.6%	9.6%	32.8%	18.1%	-4.6%	6,873,719	7,726,001	852,281	12.4
<b>3 Fort Bragg</b>	<b>-13.5%</b>	<b>12.0%</b>	<b>-6.3%</b>	<b>47.7%</b>	<b>44.6%</b>	<b>11.1%</b>	<b>1,701,859</b>	<b>2,054,171</b>	<b>352,312</b>	<b>20.7</b>
4 Willits	12.5%	14.1%	2.1%	31.2%	19.8%	0.0%	1,655,439	1,851,851	196,411	11.9
5 Point Arena	-19.6%	-15.3%	-41.5%	1.6%	23.0%	-2.0%	66,639	60,935	(5,704)	(8.6)
Shasta Co Total	0.0%	11.5%	3.8%	36.8%	23.4%	5.7%	35,559,391	41,135,590	5,576,200	15.7
<b>Mendocino Co Total</b>	<b>3.2%</b>	<b>14.4%</b>	<b>7.8%</b>	<b>42.8%</b>	<b>28.8%</b>	<b>5.6%</b>	<b>17,103,358</b>	<b>20,348,159</b>	<b>3,244,801</b>	<b>19.0</b>
Lake Co Total	22.3%	20.1%	7.1%	34.8%	21.2%	6.4%	7,411,558	8,581,497	1,169,939	15.8
South Coast	-10.6%	<b>-3.7%</b>	-10.4%	29.7%	34.8%	<b>18.8%</b>	3,065,514,886	3,563,226,501	497,711,615	16.2
Inland Empire	1.9%	<b>9.0%</b>	3.8%	50.6%	37.7%	<b>21.9%</b>	832,289,870	1,053,348,168	221,058,298	26.6
Other Southern	6.2%	<b>3.1%</b>	-5.9%	48.7%	18.0%	<b>14.1%</b>	31,223,578	35,983,764	4,760,186	15.2
<b>Southern California</b>	<b>-3.3%</b>	<b>1.7%</b>	<b>-3.5%</b>	<b>32.5%</b>	<b>28.6%</b>	<b>15.3%</b>	<b>3,929,028,333</b>	<b>4,652,558,433</b>	<b>723,530,099</b>	<b>18.4</b>
S.F. Bay Area	-11.0%	<b>-4.7%</b>	-10.1%	23.8%	26.3%	<b>13.6%</b>	1,568,577,324	1,748,869,361	180,292,037	11.5
Central Valley	8.2%	<b>10.8%</b>	8.5%	45.9%	33.9%	<b>20.0%</b>	751,050,756	943,908,573	192,857,817	25.7
Sacramento Valley	5.8%	<b>6.4%</b>	-1.0%	36.6%	28.0%	<b>16.8%</b>	536,877,924	637,652,163	100,774,240	18.8
Central Coast	-8.7%	<b>2.2%</b>	-2.0%	39.5%	28.9%	<b>11.4%</b>	164,224,833	192,304,994	28,080,161	17.1
Other Northern	4.0%	<b>11.4%</b>	8.0%	35.2%	26.6%	<b>9.2%</b>	73,218,244	86,726,773	13,508,529	18.4
<b>North Coast</b>	<b>3.3%</b>	<b>13.3%</b>	<b>5.3%</b>	<b>38.2%</b>	<b>24.6%</b>	<b>5.7%</b>	<b>60,074,306</b>	<b>70,065,246</b>	<b>9,990,940</b>	<b>16.6</b>
<b>Northern California</b>	<b>-7.9%</b>	<b>-1.1%</b>	<b>-7.5%</b>	<b>34.2%</b>	<b>35.3%</b>	<b>19.4%</b>	<b>3,154,023,387</b>	<b>3,679,527,111</b>	<b>525,503,725</b>	<b>16.7</b>
<b>MUNI/AVENU STATEWIDE</b>	<b>-5.9%</b>	<b>0.0%</b>	<b>-5.7%</b>	<b>33.4%</b>	<b>32.3%</b>	<b>17.6%</b>	<b>7,083,051,720</b>	<b>8,332,085,544</b>	<b>1,249,033,824</b>	<b>17.6</b>