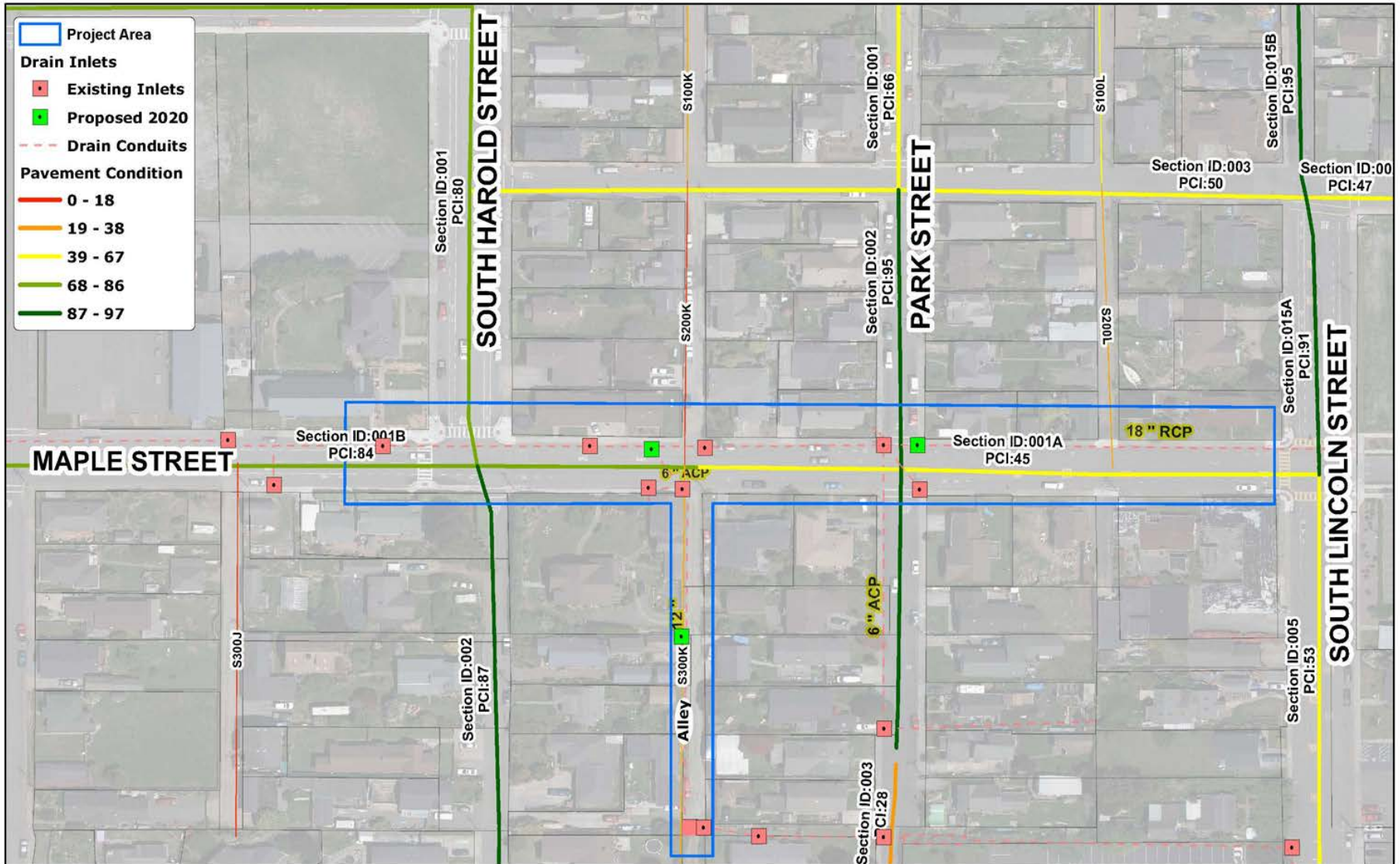




# 2020 Maple Street Drainage Rehabilitation Proposed Drain Inlet Locations



# Maple Street Project – Lincoln to Park

Needs replacement - LACO improvement plans dated January 2015



Image 1 - Inlets at crosswalk on S Franklin at Redwood Elementary – view looking north  
Crosswalk is frequently flooded due to issues downstream



Image 2 - Inlet on S Lincoln - 150 feet of downstream pipe was replaced in Feb of 2018

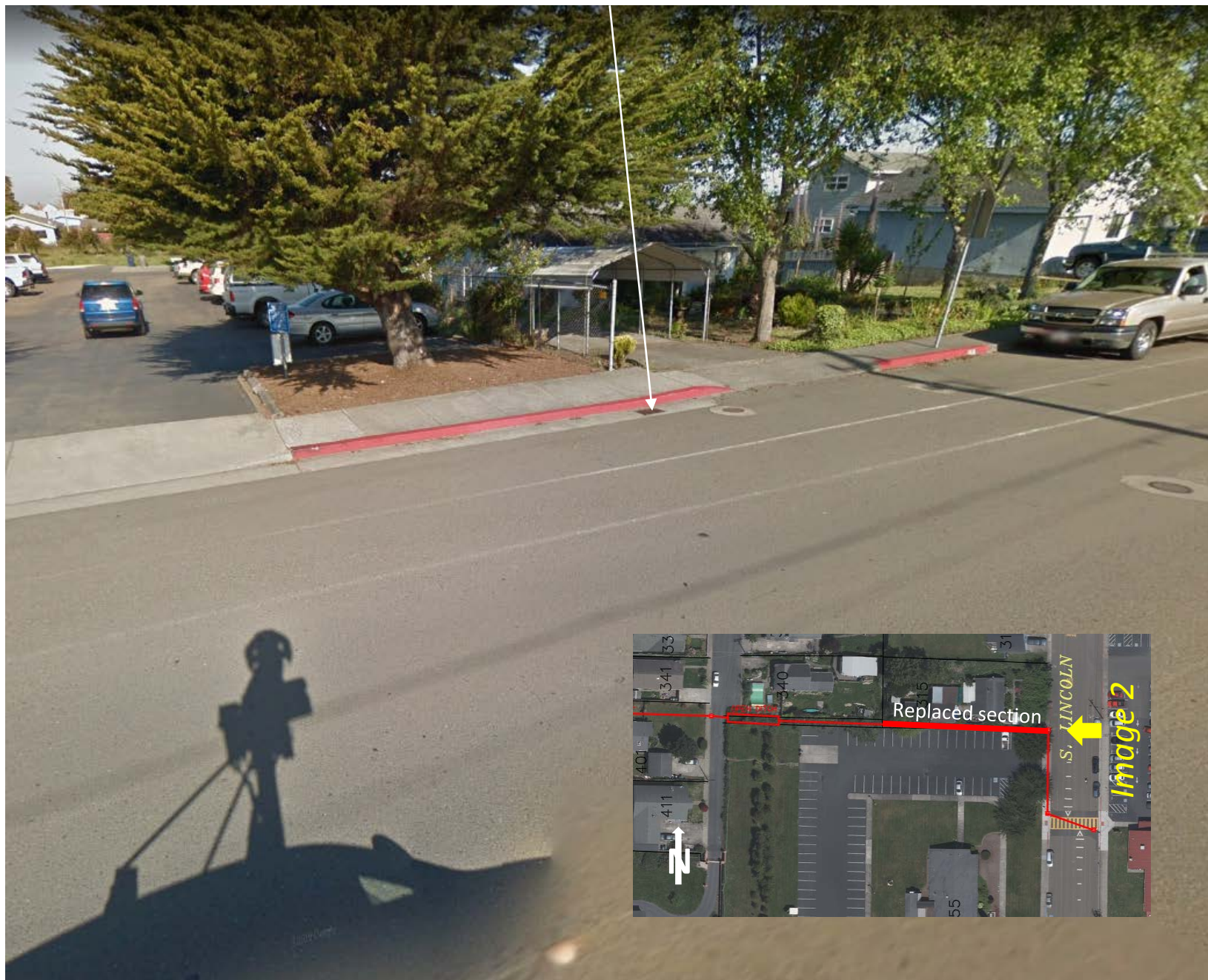


Image 3 - West end of drainage from S Lincoln, and southernmost inlet on Park - view looking south – owner of 340 Park has been asking for new pipe since April of 2018



# Maple Street Project – Park to Maple

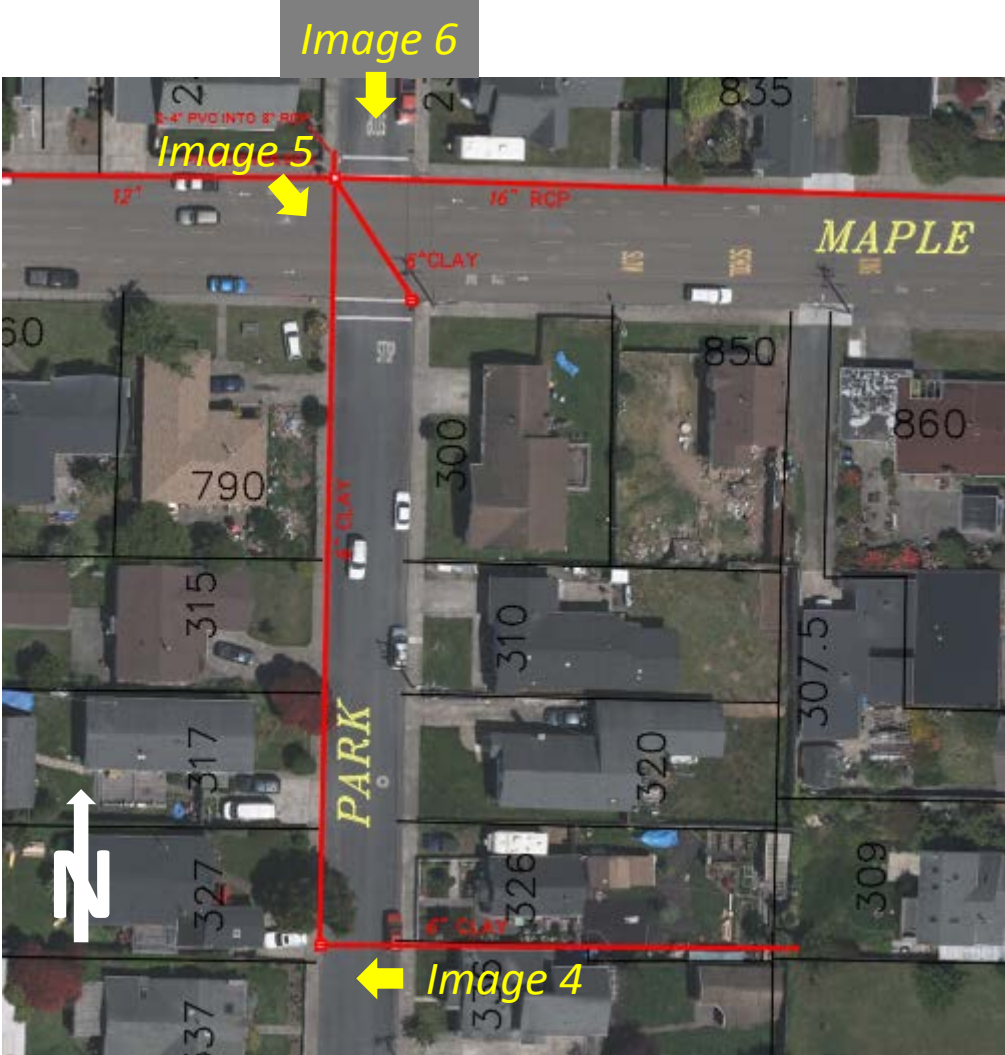


Image 4 - Inlet on W side of Park – view looking west

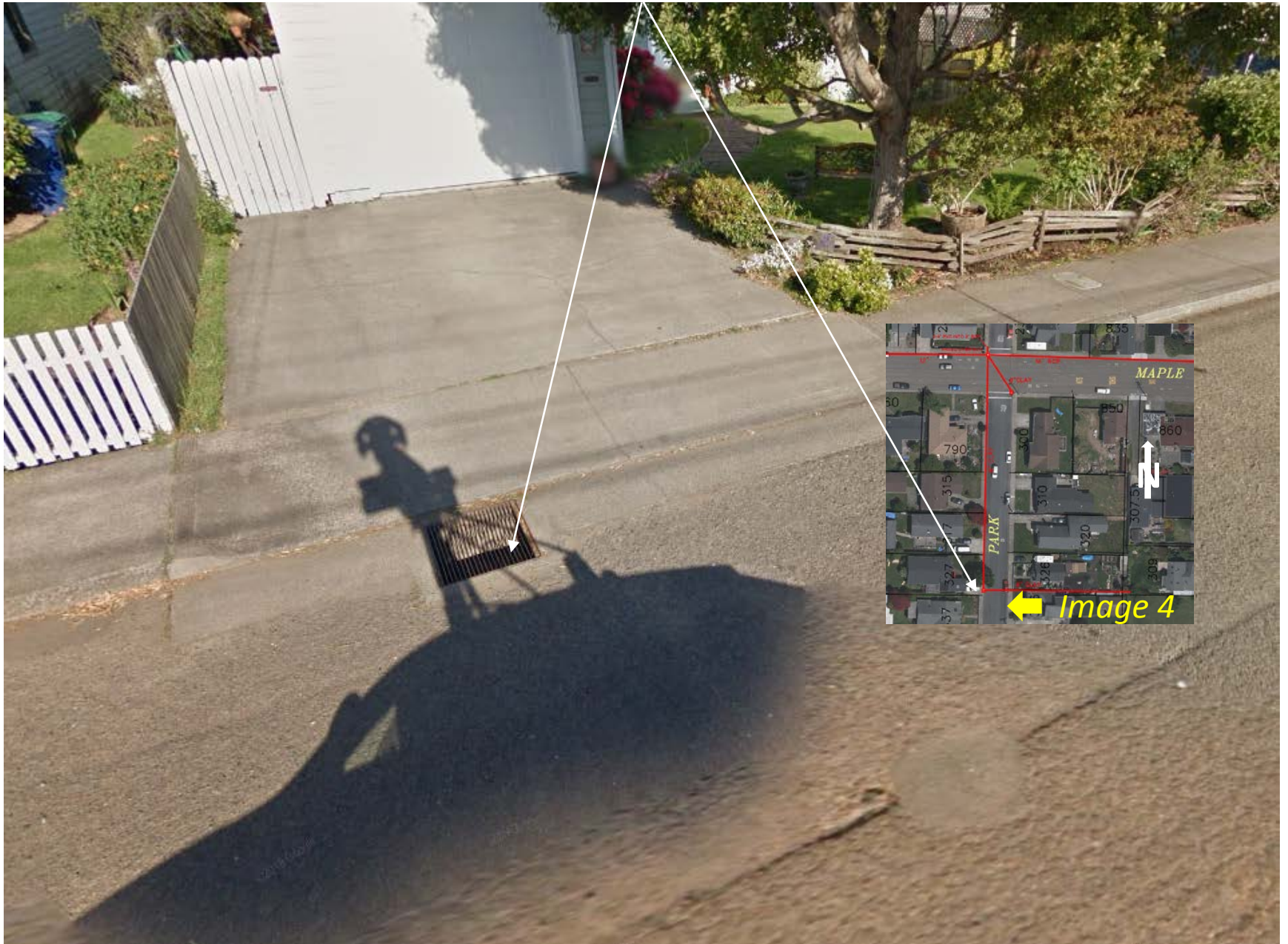




Image 5 - Inlet at SE corner Park and Maple



Image 6 - Inlet (pipe opening only) at NW corner Park and Maple – view looking south





Image 7 – Inlets on south side of Maple at alley

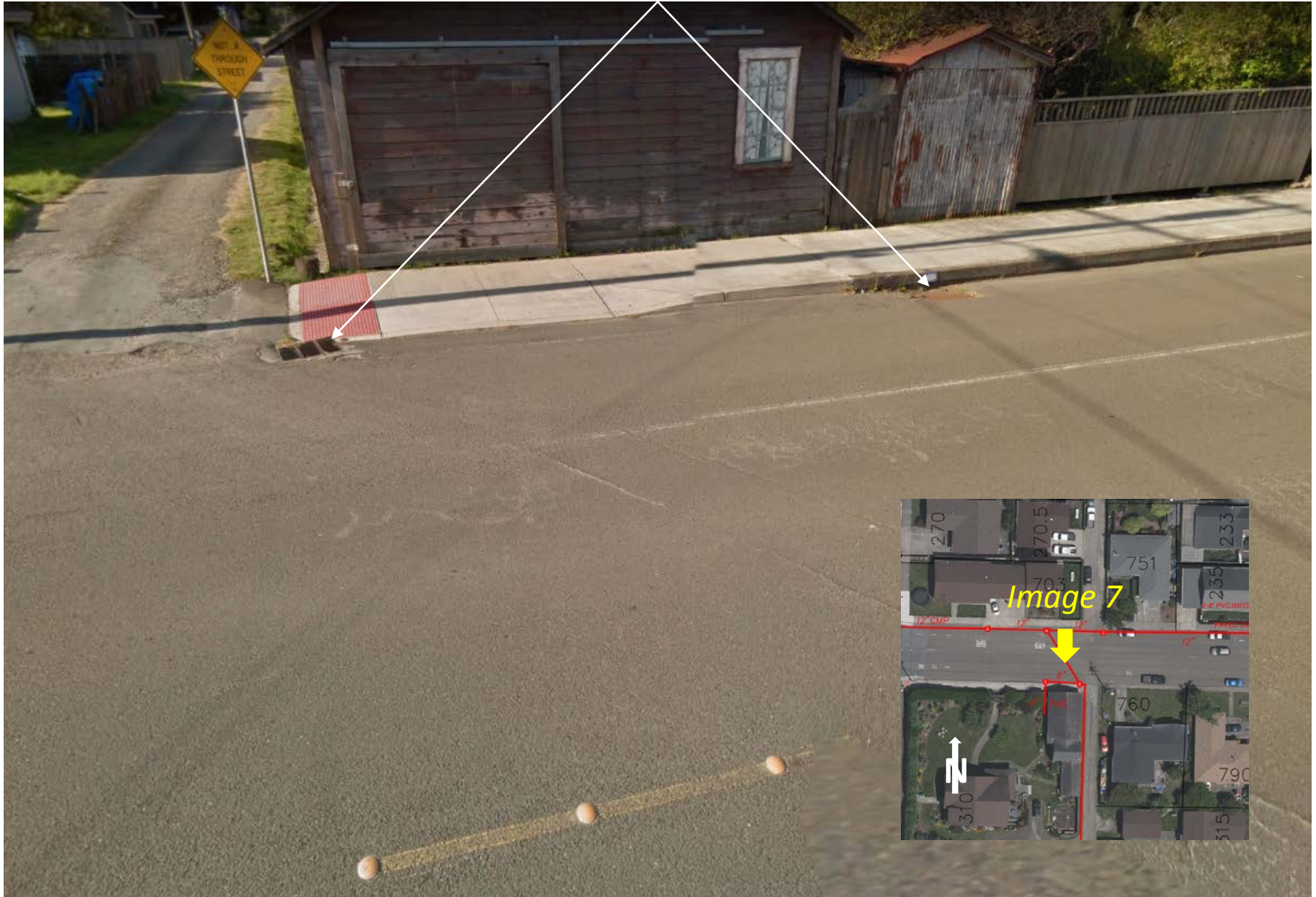


Image 8 – Inlets on north side of Maple at alley



# Maple Street Project – Maple Street from Alley to end project



Image 9 – Last inlet within project limits on the north side of Maple, east of Corry

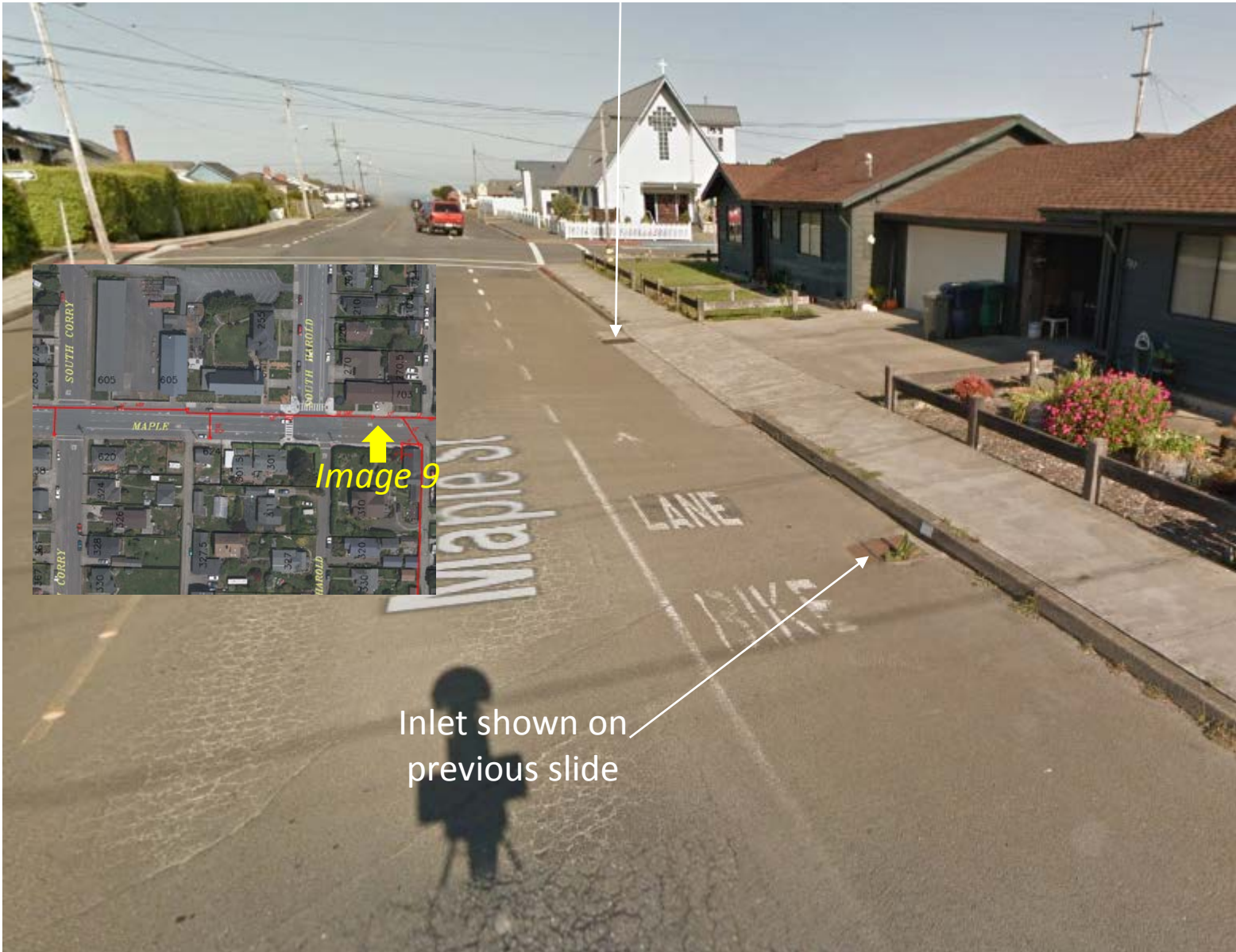


Image 10 – Last inlet within project limits on the south side of Maple, east of Corry

