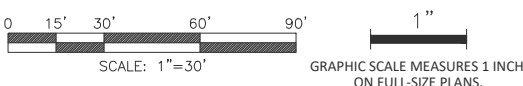


TREE SPECIES KEY:

-  MP MONTEREY PINE
-  SP SHORE PINE
-  BP BISHOP PINE
-  DF DOUGLAS FIR



- NOTES:**
1. PROJECT SITE IS CURRENTLY UNDEVELOPED.
 2. EXISTING TOPOGRAPHY FROM REPUBLIC NATIONAL DATED FEBRUARY 26, 2018.
 3. THE EXISTING PARCELS IN THIS AREA HAVE A LAND USE AND ZONING DESIGNATION OF HIGHWAY VISITOR COMMERCIAL (CH). THE EXISTING COUNTY PARCELS TO THE WEST HAVE THE DESIGNATION OF RURAL RESIDENTIAL AND VARIABLE DENSITY ZONE PER MENDOCINO COUNTY GENERAL PLAN.
 4. TREE SPECIES AS SURVEYED:
 - 4.1. BP - BISHOP PINE
 - 4.2. MP - MONTEREY PINE
 - 4.3. DF - DOUGLAS FIR
 - 4.4. SP - SHORE PINE
 5. EIGHT TREES TO BE REMOVED WHERE INDICATED: X



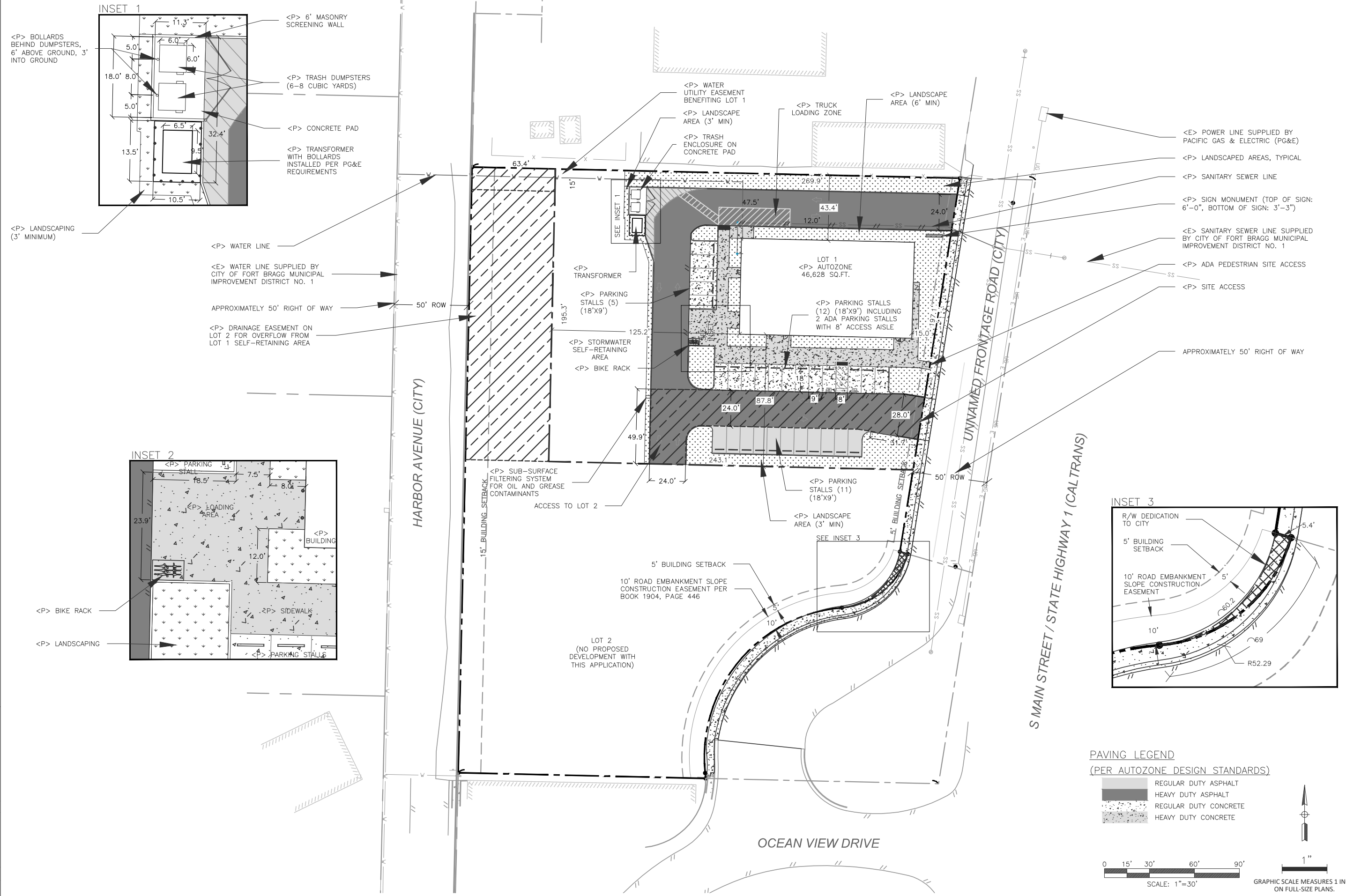
LACO
 EUREKA • UKIAH • SANTA ROSA
 1-800-515-5054 www.lacocoassociates.com

NO.	HISTORY / REVISION	BY	CHK.	DATE

COASTAL DEVELOPMENT PERMIT & DESIGN REVIEW
 AUTOZONE RETAIL STORE 1151 S MAIN ST, FORT BRAGG, CA ; APN:018-440-58
 EXISTING CONDITIONS
 AUTOZONE DEVELOPMENT CORPORATION
 123 SOUTH FRONT STREET, MEMPHIS, TN 38103

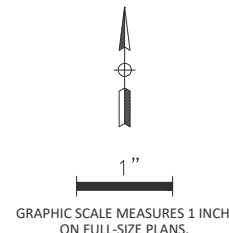
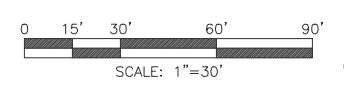
DRAWN	ATW/ASV
CHECK	CMB
APPROVED	DNC
DATE	05/18/2019
JOB NUMBER	8978.01
SHEET	

May 18, 2019 - 1:52pm
 T:\Clients\8978\8978_02_MICH_BHAMMUNIDOMV_8978.01_COASTAL_DEVELOPMENT_PERMIT.dwg



PAVING LEGEND
(PER AUTOZONE DESIGN STANDARDS)

- REGULAR DUTY ASPHALT
- HEAVY DUTY ASPHALT
- REGULAR DUTY CONCRETE
- HEAVY DUTY CONCRETE



LACO
EUREKA • UKIAH • SANTA ROSA
1-800-515-5054
www.lacocoassociates.com

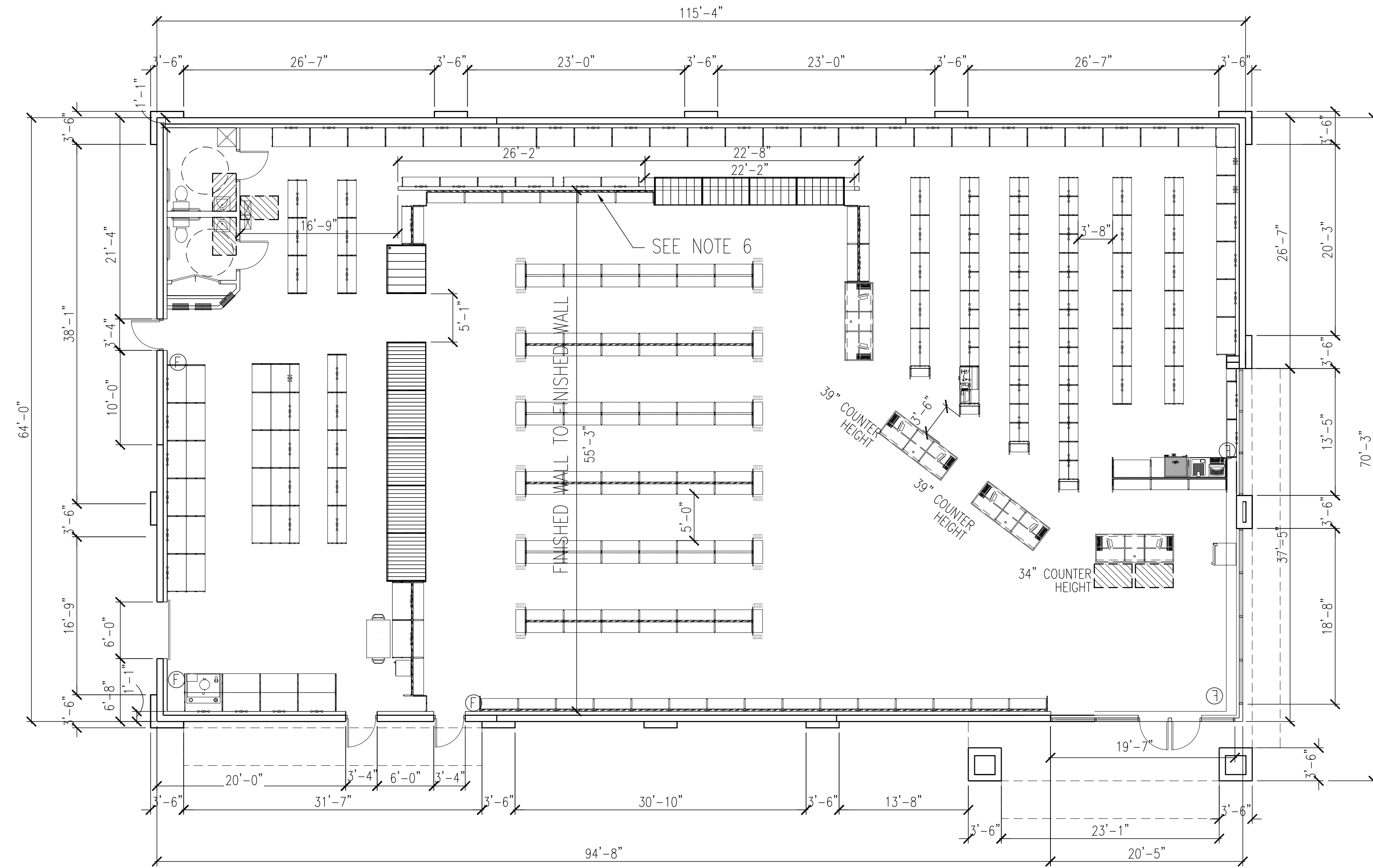
NO.	HISTORY / REVISION	BY	CHK.	DATE

COASTAL DEVELOPMENT PERMIT & DESIGN REVIEW
AUTOZONE RETAIL STORE 1151 S MAIN ST, FORT BRAGG, CA ; APN:018-440-58

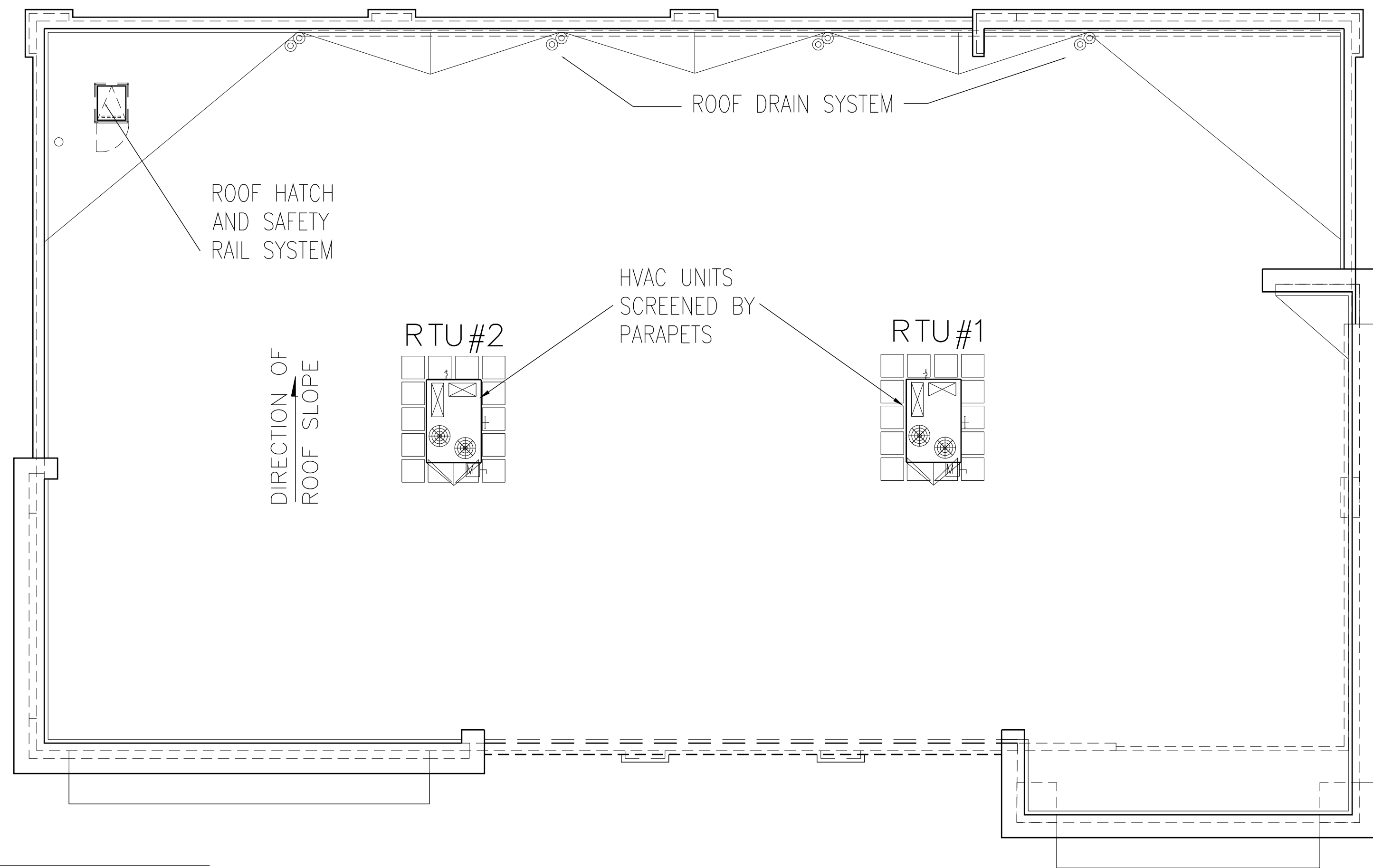
COASTAL DEVELOPMENT PERMIT SITE PLAN

AUTOZONE DEVELOPMENT CORPORATION
123 SOUTH FRONT STREET, MEMPHIS, TN 38103

DRAWN	ATW/ASV
CHECK	CMB
APPROVED	DNC
DATE	05/18/2019
JOB NUMBER	8978.01
SHEET	3/3



1 FLOOR PLAN
Scale: 1/8"=1'-0"



2 ROOF PLAN
Scale: 1/8"=1'-0"

REVISIONS

1	03-15-19	4
2		5
3		6

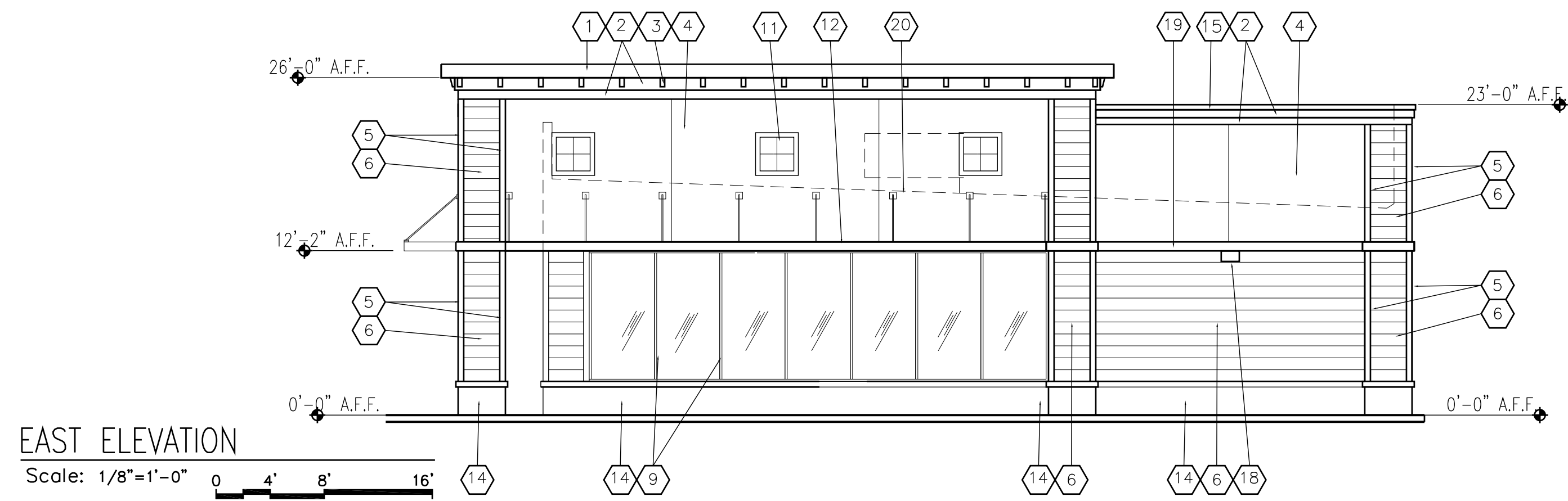
AutoZone Store No. 6713
MAIN STREET

FORT BRAGG CA 95437

Architect: --
123 South Front Street
Memphis, Tennessee 38103
TEL: 901-495-8714 FAX: (901) 495-8969
For Bidding & Contractor Information Contact:
McGraw - Hill Construction Tel. 615-884-1017
www.construction.com

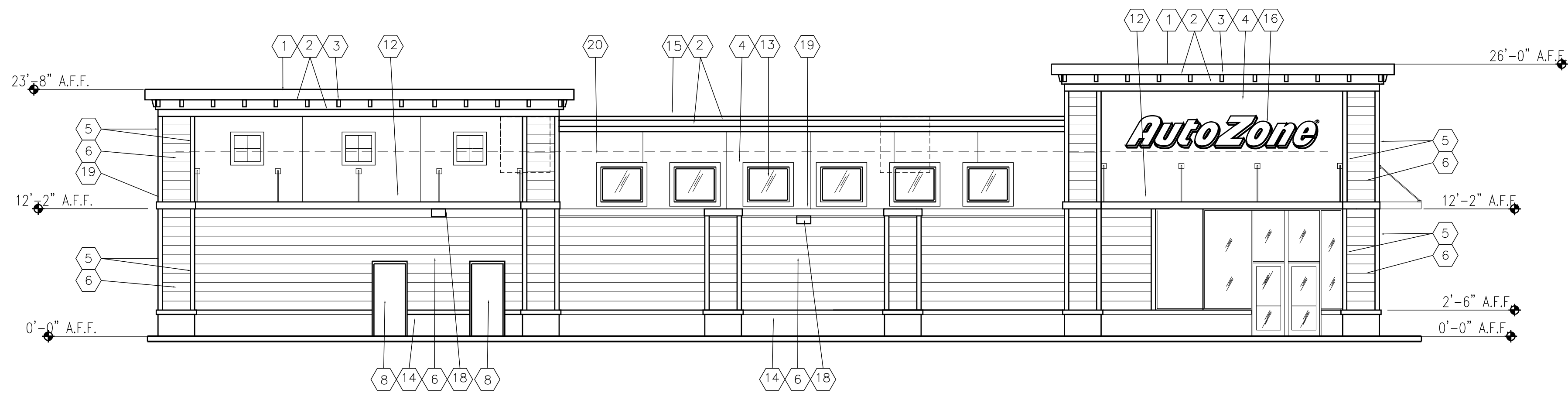
04-17-18
7N2-R

PS-1



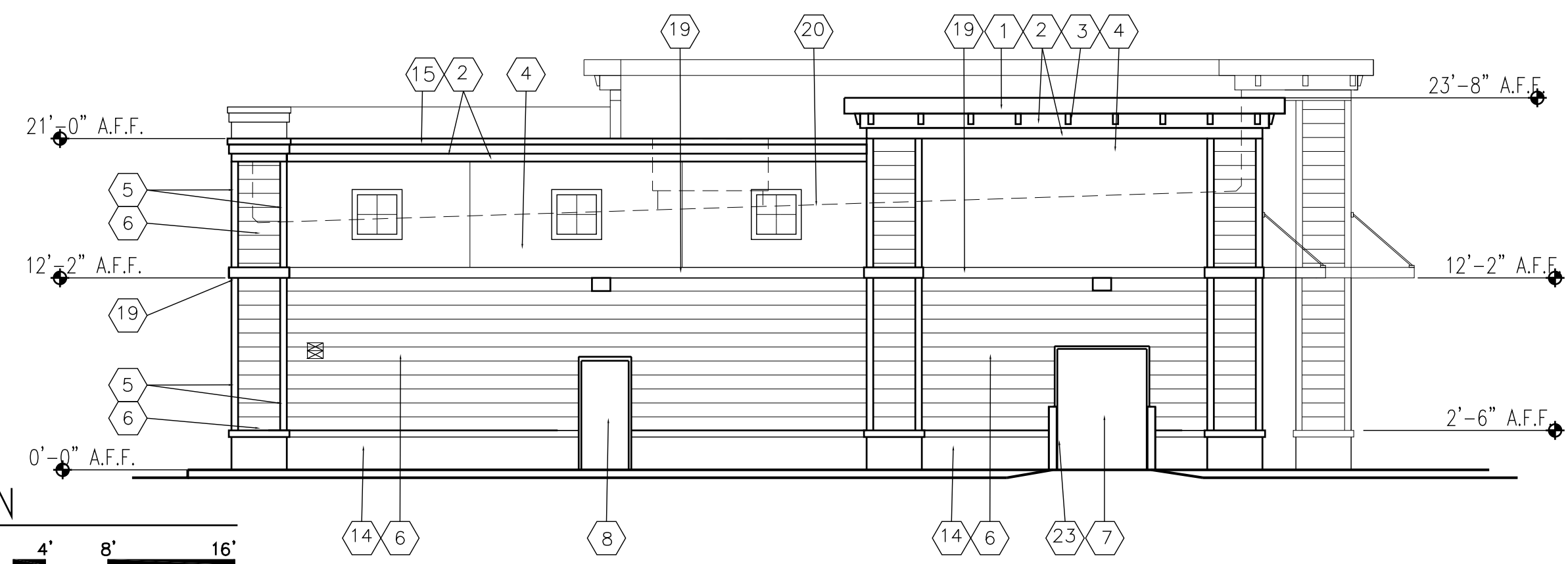
EAST ELEVATION

Scale: 1/8"=1'-0" 0 4' 8' 16'



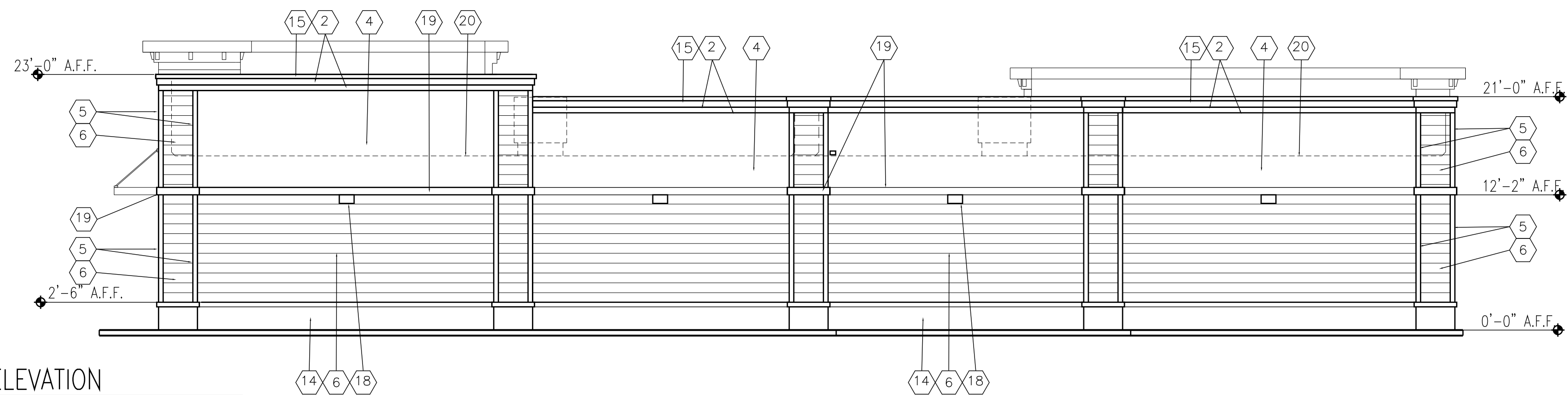
SOUTH ELEVATION

Scale: 1/8"=1'-0" 0 4' 8' 16'



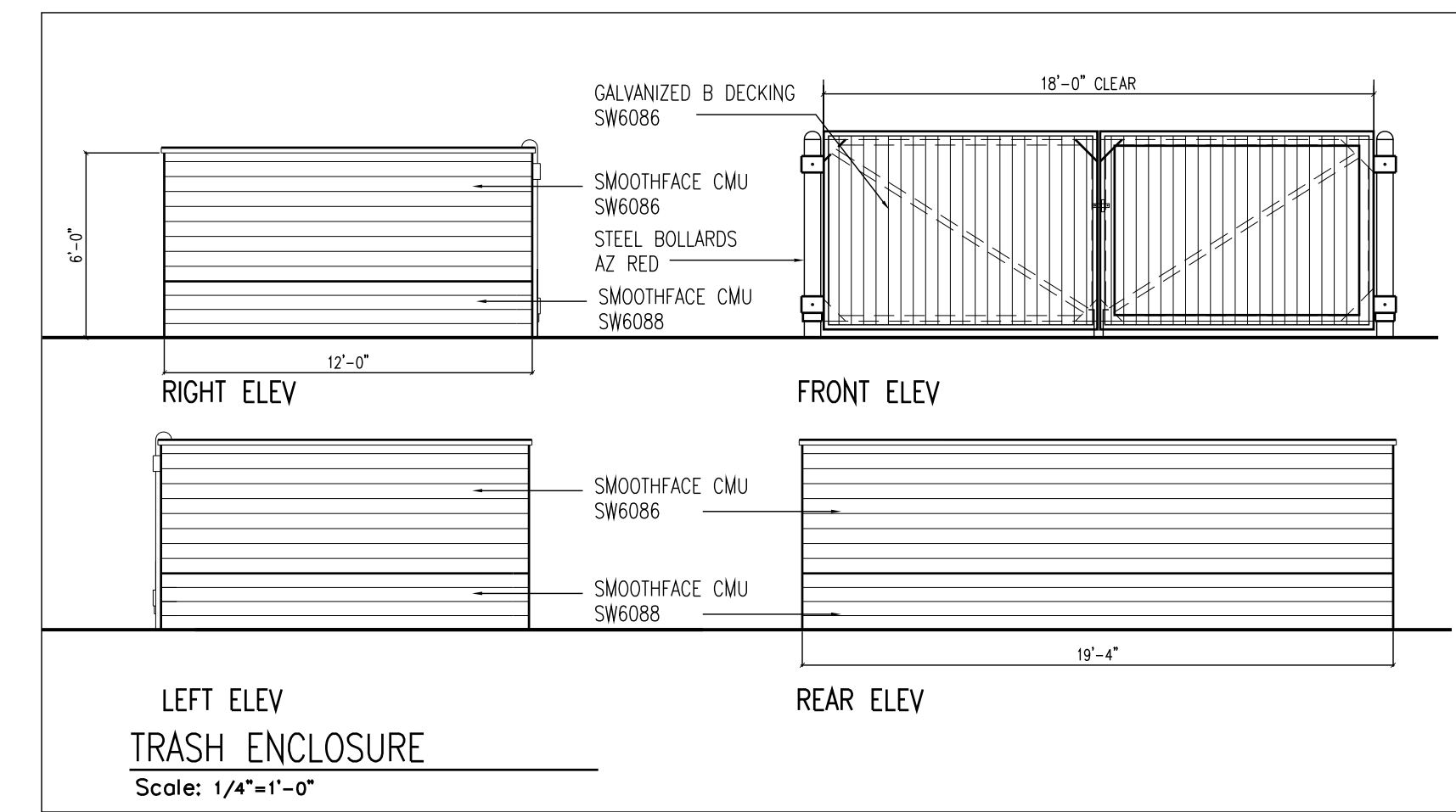
WEST ELEVATION

Scale: 1/8"=1'-0" 0 4' 8' 16'



NORTH ELEVATION

Scale: 1/8"=1'-0" 0 4' 8' 16'



TRASH ENCLOSURE

Scale: 1/4"=1'-0"

REVISIONS

1	03-15-19	4
2		5
3		6

AutoZone Store No. 6713
MAIN STREET

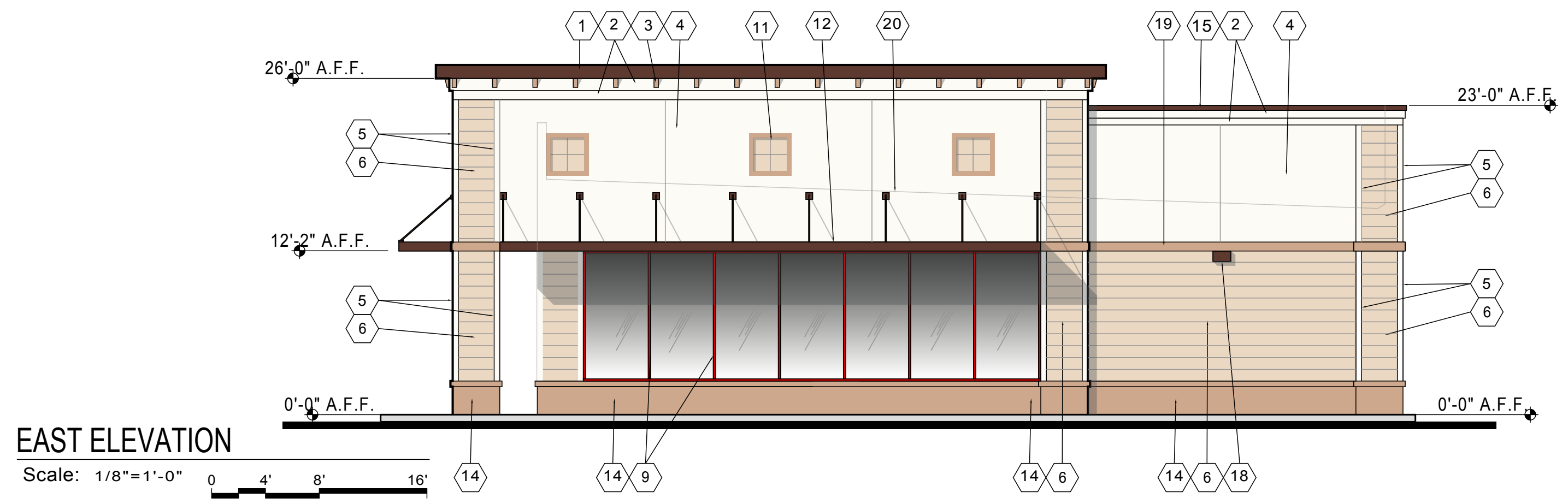
FORT BRAGG CA 95437

Architect: --
123 South Front Street
Memphis, Tennessee 38103
TEL: 901-495-8714 FAX: (901) 495-8969
For Bidding & Contractor Information Contact:
McGraw - Hill Construction Tel. 615-884-1017
www.construction.com

04-17-18

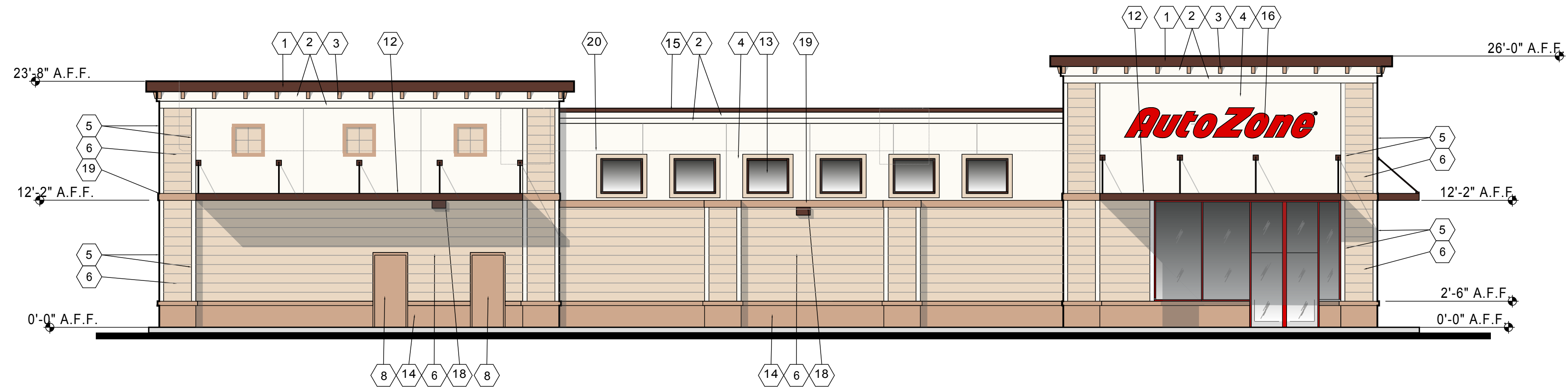
7N2-R

PS-2



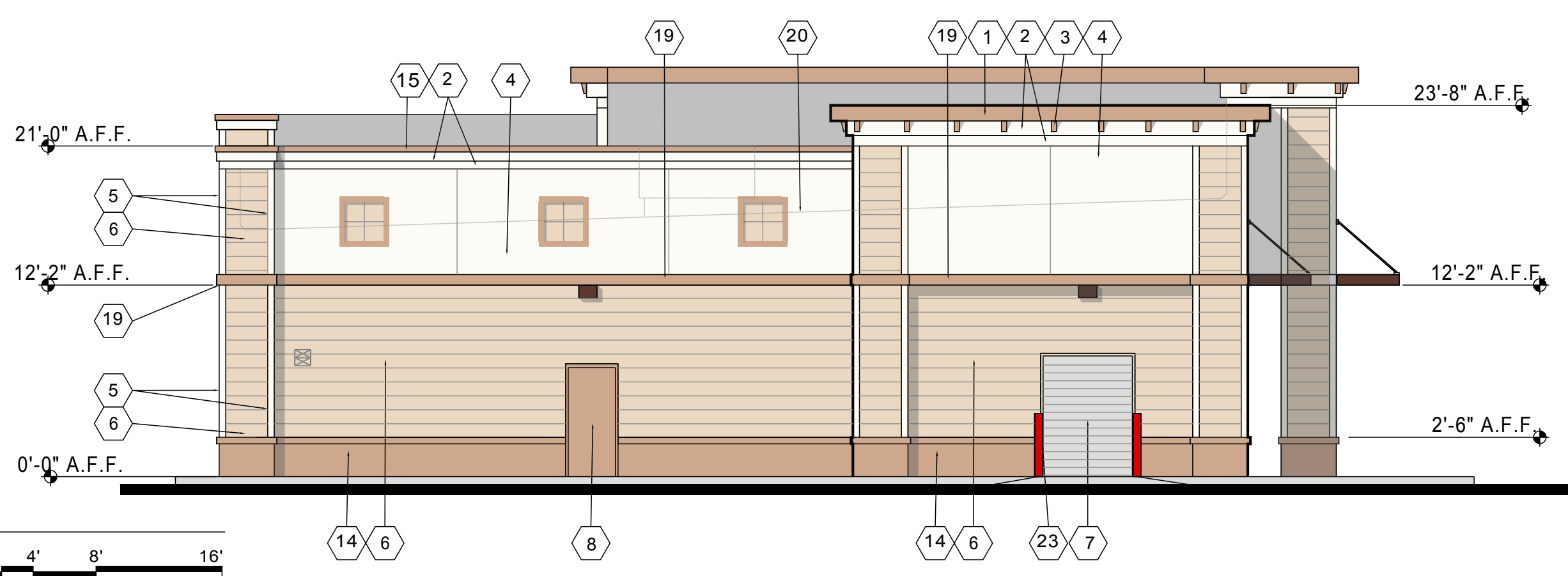
EAST ELEVATION

Scale: 1/8"=1'-0"



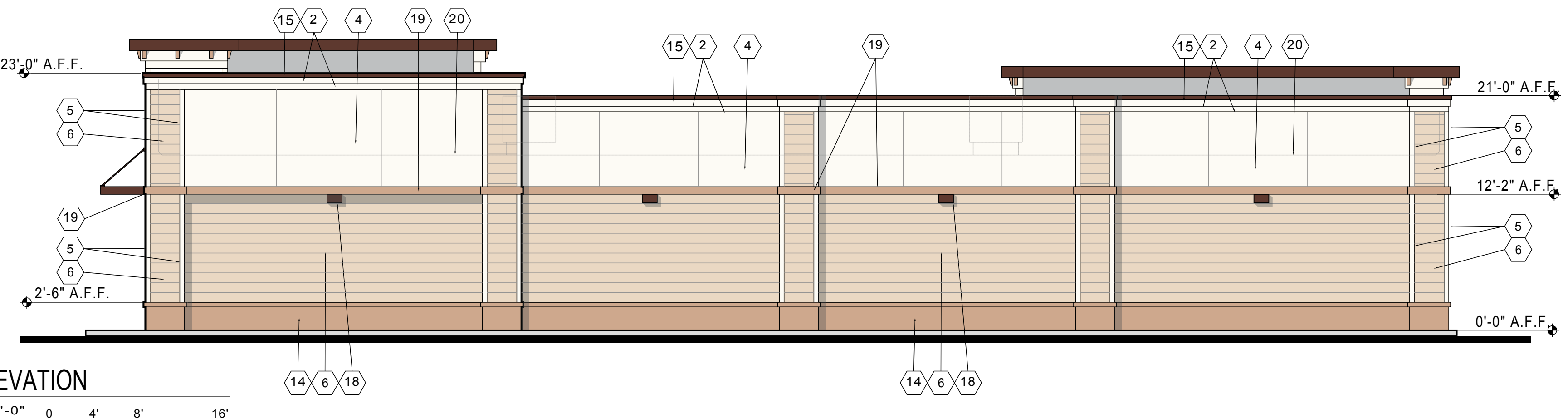
SOUTH ELEVATION

Scale: 1/8"=1'-0"



WEST ELEVATION

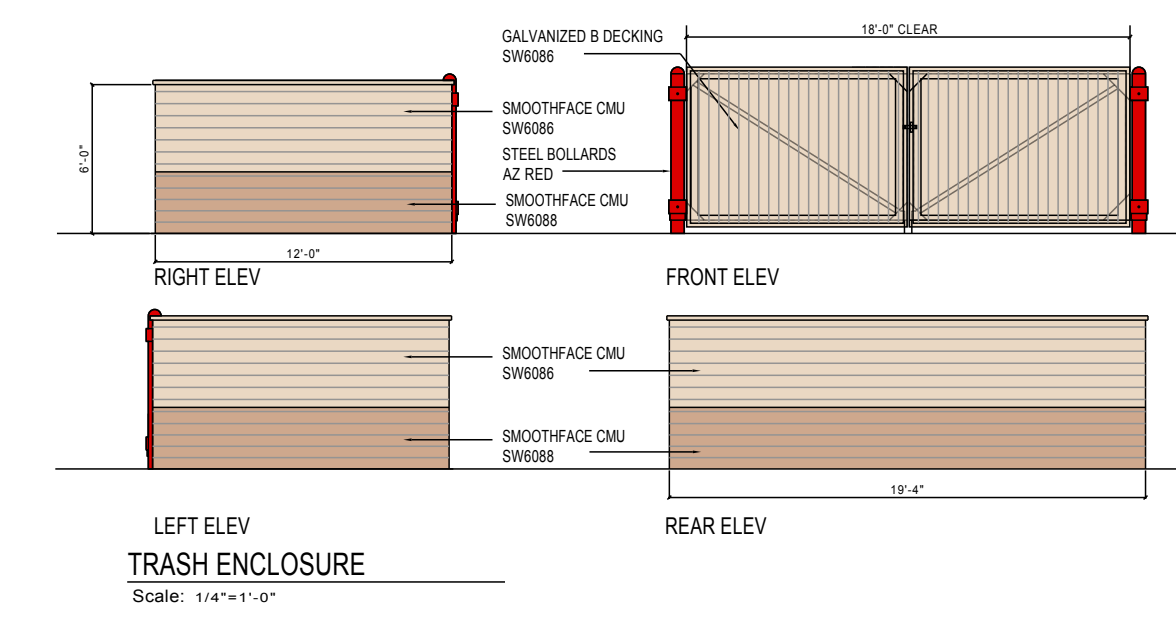
Scale: 1/8"=1'-0"



NORTH ELEVATION

1/8"=1'-0"

- 1 STUCCO FINISH AT CORNICE - SW6093 SABLE
- 2 STUCCO FINISH AT CORNICE - SW6091 RELIABLE WHITE
- 3 CORBELS - SW6088 NUTHATCH
- 4 STUCCO FINISH - SW6086 SAND DUNE
- 5 HARDIE TRIM - COLOR: RELIABLE WHITE
- 6 HARDIE BOARD LAP SIDING TRIM - COLOR: SW6086 SAND DUNE
- 7 DO NOT PAINT OVERHEAD DOOR PAINT ANGLES RELIABLE WHITE
- 8 PAINT MAN DOOR & METAL FRAMES NUTHATCH
- 9 ALUMINUM STOREFRONT - RED FINISH
- 10 GLASS AND ALUMINUM DOORS - CLEAR ANODIZED FINISH
- 11 DECORATIVE ACCENT FRAME COLOR SW6088 INSET AREA SW6086
- 12 METAL AWNING - PAINT SW6093 SABLE
- 13 CLERESTORY WINDOWS WITH DARK BRONZE FRAMES, HARDIE BOARD TRIM COLOR SW6088 NUTHATCH
- 14 STUCCO FINISH AT BASE - SW6088 NUTHATCH
- 15 PREFINISHED METAL COPING - DARK BRONZE
- 16 WALL SIGN - 34" RED CHANNEL LETTERS
- 17 STORE ADDRESS - 6" WHITE REFLECTIVE NUMBERS
- 18 WALL MOUNTED LIGHT FIXTURE
- 19 STUCCO PROJECTION - SW6088 NUTHATCH
- 20 ROOF LINE BEYOND
- 21 HVAC UNITS SCREENED BY PARAPETS
- 22 MASONRY TRASH ENCLOSURE - FINISHES TO MATCH BUILDING
- 23 PIPE GUARD WITH RED SLEEVE



TRASH ENCLOSURE

Scale: 1/4"=1'-0"

AUTOZONE, INC.		3	4
123 South Front Street	03-15-19		
Memphis, TN. 38103			
901-495-8714			

AutoZone Store No. 6713	CA	95437
MAIN STREET		
FORT BRAGG,		
COLOR ELEVATIONS		

7N2-R

CE1

