

REVISIONS	BY

NOTES:

### LEGEND TO SYMBOLS:

DRAWING TITLE  
DRAWING SCALE

## A# SECTION CUT DRAWING NUMBER SHEET NUMBER

## A# DETAIL DRAWING NUMBER SHEET NUMBER

# DOOR NUMBER, SEE SCHEDULES, SHT A5

# WINDOW NUMBER

# PLUMBING FIXTURE CALL OUT

# APPLIANCE CALL OUT

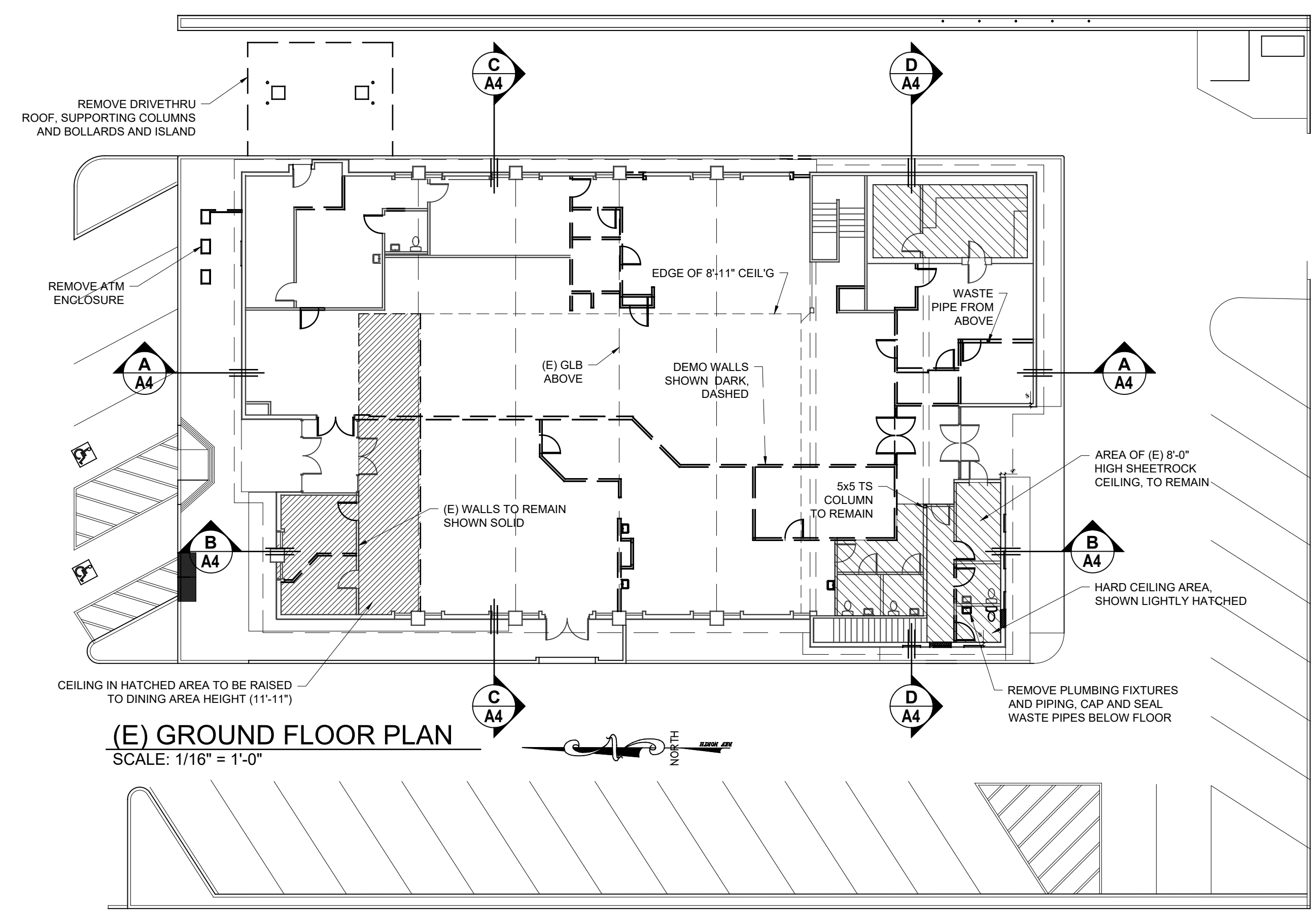
# ELEVATION OF FINISHED GRADE (+0' IS INTERIOR FINISH FLOOR FOR REFERENCE)

(E) WALL TO REMAIN

(E) WALL TO BE REMOVED

(N) WALL 2x6 (2x4) W/ 1/2" GYP BD. EA SIDE

FLOOR SINK, SEE FOOD SERVICE EQUIPMENT DRAWINGS FOR KITCHEN AREA DETAILS



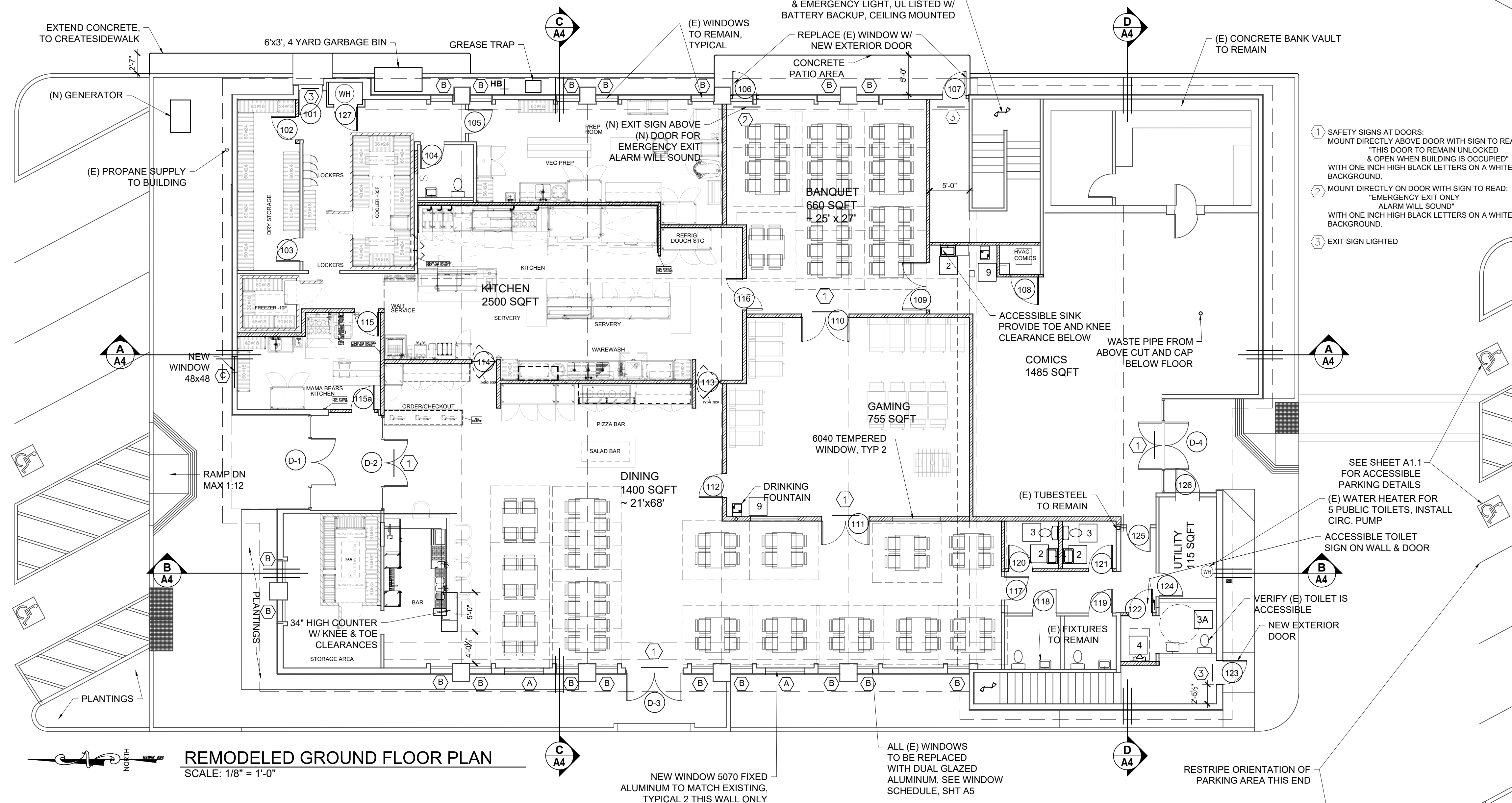
#### PLUMBING CALCULATIONS

- FLOOR DRAIN,
- FIXTURE COUNT: (PER TABLE 422.1 IN CPC2022)
- |                   |            |          |
|-------------------|------------|----------|
| WATER CLOSETS     | 2 MALE,    | 4 FEMALE |
| URINALS           | 1 MALE,    |          |
| LAVATORIES        | 1 MALE,    | 2 FEMALE |
| DRINKING FOUNTAIN | 1 REQUIRED |          |
- 254 OCCUPANT LOAD IS PRESUMED  
 HALF MEN, HALF WOMEN,  
 127 MEN AND 127 WOMEN  
 USED FOR FIXTURE COUNT

PLEASE REFER TO FOOD SERVICE EQUIPMENT DRAWINGS FOR ADDITIONAL PLUMBING INFORMATION FOR KITCHEN AND BAR AREAS.

#### OCCUPANT LOAD: (PER TABLE 1004.5 IN CBC2022)

GAMING FLOORS 11 GROSS, 30 NET	$650 / 11 = 59.1 = 60$
DINING 15 NET ASSEMBLY W/OUT FIXED SEATS, TABLES & CHAIRS BAR AREA (6 SEATS)	$1528 / 15 = 101.8 = 102$ $= 6 = 6$
BANQUET 15 NET	$685 / 15 = 45.67 = 46$
COMMERCIAL KITCHEN 200 GROSS	$2510 / 200 = 12.5 = 13$
MERCANTILE 60 GROSS	$1485 / 60 = 24.8 = 25$
STORAGE/UTILITY 300 GROSS	$355 / 300 = 1.2 = 2$
<b>TOTAL OCCUPANT LOAD</b>	<b>= 254 PERSONS</b>



- SAFETY SIGNS AT DOORS: MOUNT DIRECTLY ABOVE DOOR WITH SIGN TO READ: "THIS DOOR TO REMAIN UNLOCKED & OPEN WHEN BUILDING IS OCCUPIED" WITH ONE INCH HIGH BLACK LETTERS ON A WHITE BACKGROUND.
- MOUNT DIRECTLY ON DOOR WITH SIGN TO READ: "EMERGENCY EXIT ONLY ALARM WILL SOUND" WITH ONE INCH HIGH BLACK LETTERS ON A WHITE BACKGROUND.
- EXIT SIGN LIGHTED

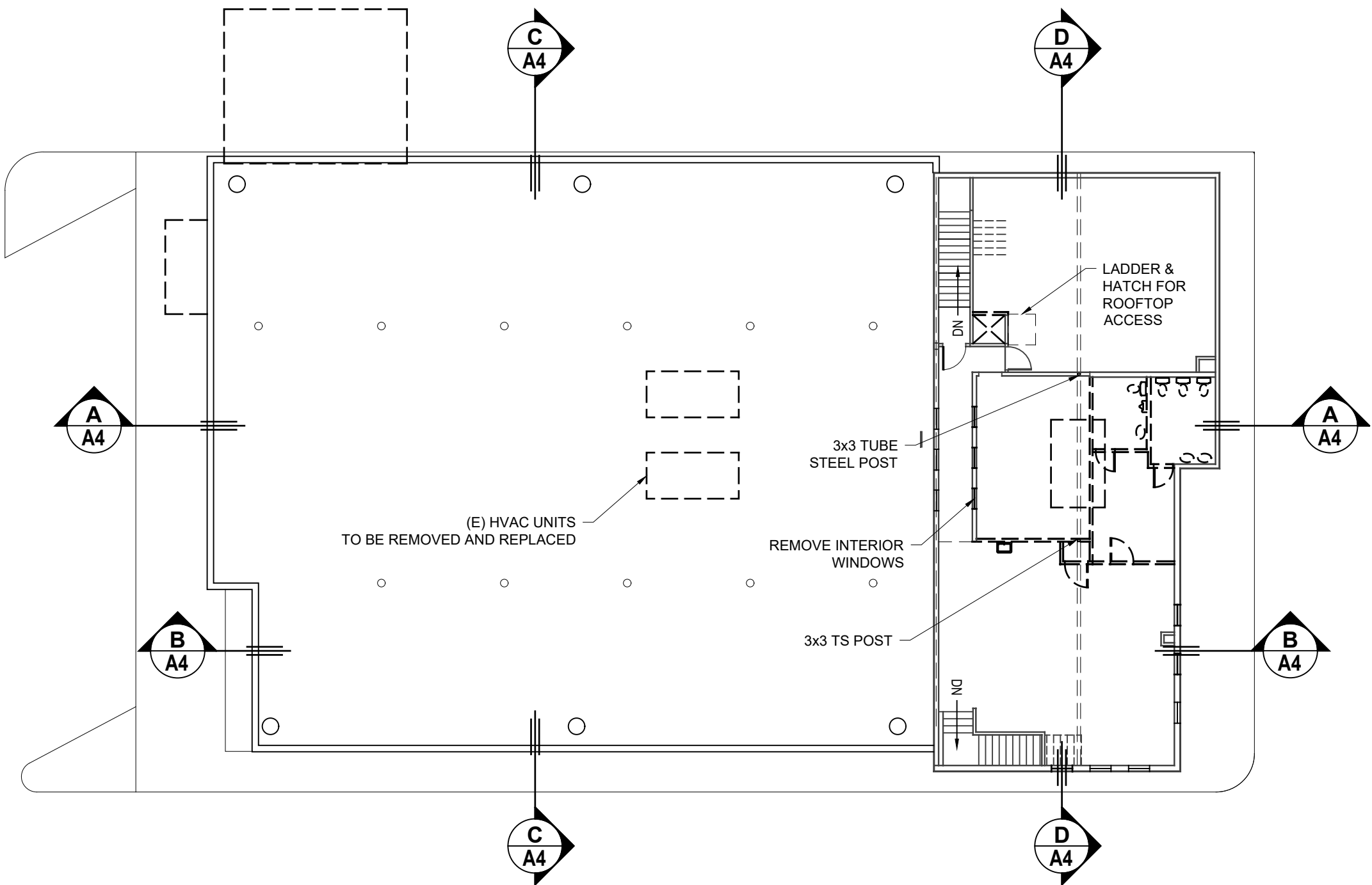
#### REMODELING PLANS FOR:

**PAPA BEAR'S PIZZA**  
 228 N. MAIN ST.  
 FORT BRAGG, CA 95437

A.P. #008-153-28-00

DATE:	DECEMBER 22, 2023
SCALE:	AS NOTED
DRAWN BY:	KBG
JOB:	POOS
SHEET:	

#### GROUND FLOOR PLAN



**(E) UPPER FLOOR PLAN**  
SCALE: 1/16" = 1'-0"

**LEGEND TO SYMBOLS:**

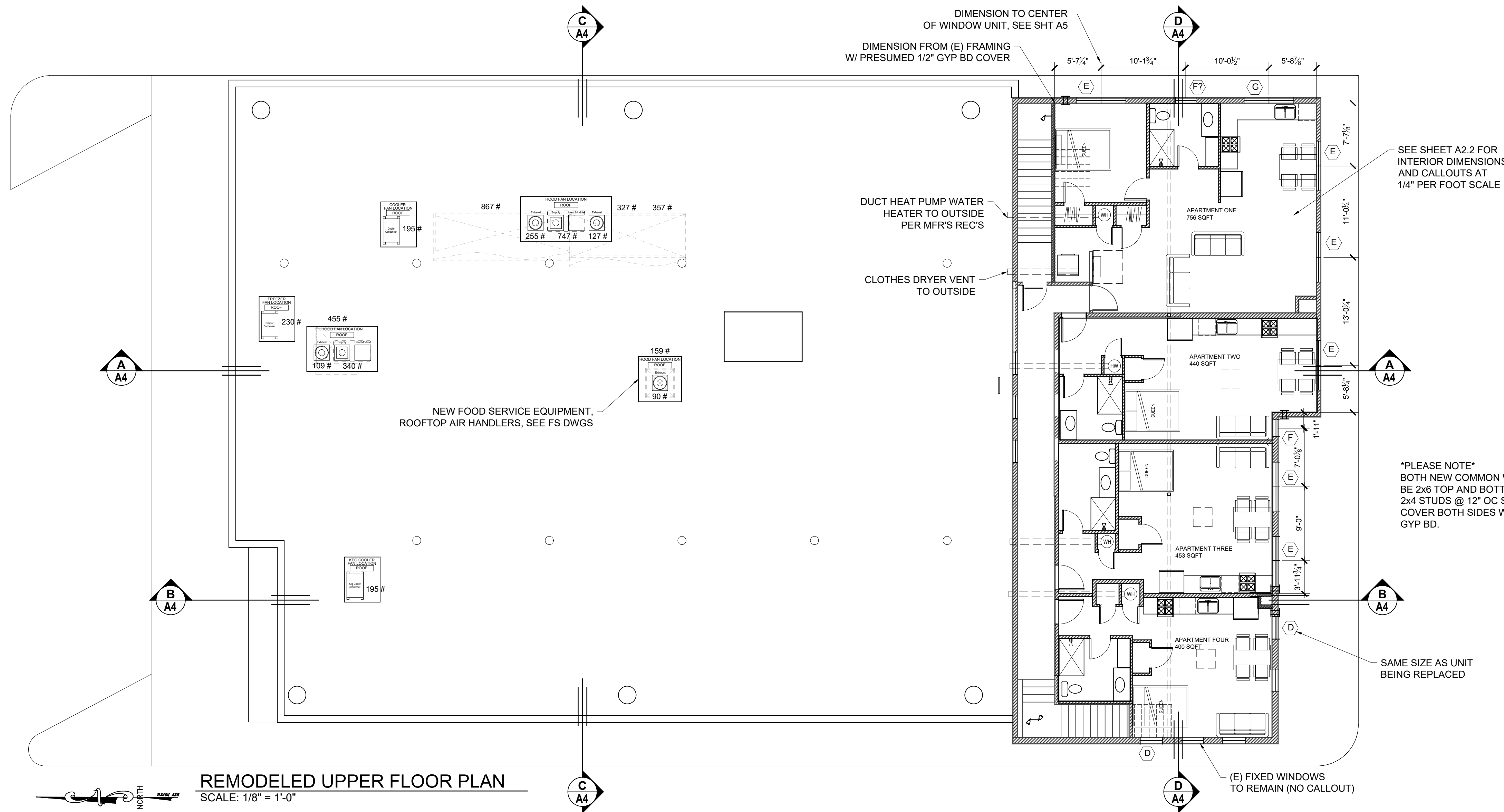
**DRAWING TITLE**  
DRAWING SCALE

- ##/A# SECTION CUT DRAWING NUMBER SHEET NUMBER
- ##/A# DETAIL DRAWING NUMBER SHEET NUMBER
- ## DOOR NUMBER, SEE SCHEDULES, SHT A5
- # WINDOW NUMBER
- # PLUMBING FIXTURE CALL OUT
- # APPLIANCE CALL OUT
- # ELEVATION OF FINISHED GRADE (±0" IS INTERIOR FINISH FLOOR FOR REFERENCE)
- (E) WALL TO REMAIN
- (E) WALL TO BE REMOVED
- (N) WALL 2x6 (2x4) W/ 1/2" GYP BD. EA SIDE
- FLOOR SINK. SEE FOOD SERVICE EQUIPMENT DRAWINGS FOR KITCHEN AREA DETAILS

Kelly B. Grimes, Architect  
P.O. Box 598  
Little River, CA 95456  
707-937-2904

REVISIONS	BY

NOTES:



**REMODELED UPPER FLOOR PLAN**  
SCALE: 1/8" = 1'-0"

REMODELING PLANS FOR:

**PAPA BEAR'S PIZZA**  
228 N. MAIN ST.  
FORT BRAGG, CA 95437

A.P. #119-090-13  
DATE: MARCH 20, 2023  
SCALE: AS NOTED  
DRAWN BY: KBG  
JOB: POOS  
SHEET:

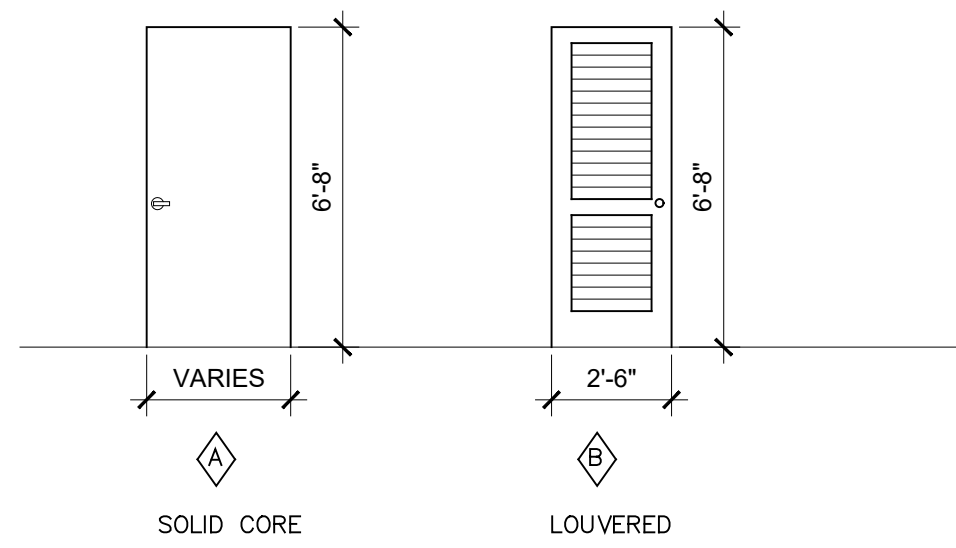
**UPPER FLOOR PLAN**

**A2.1**  
OF SHEETS

## SECOND FLOOR DOOR SCHEDULE

NUMBER	NOMINAL SIZE			TYPE	MISCELLANEOUS NOTES
	WIDTH	HEIGHT	THICK.		
200	3'-0"	6'-8"	1-3/4"	⬠	SOLID CORE, EXISTING DOOR TO REMAIN
201	3'-0"	6'-8"	1-3/4"	⬠	SOLID CORE INTERIOR WOOD DOOR FRONT DOOR APT. #1
202	2'-0"	6'-8"	1-1/2"	⬠	SOLID CORE INTERIOR WOOD DOOR
203	2'-6"	6'-8"	1-1/2"	⬠	LOUVERED
204	2'-8"	6'-8"	1-1/2"	⬠	LOUVERED
205	2'-6"	6'-8"	1-1/2"	⬠	LOUVERED
206	2'-6"	6'-8"	1-1/2"	⬠	LOUVERED
207	3'-0"	6'-8"	1-3/4"	⬠	SOLID CORE INTERIOR WOOD DOOR FRONT DOOR APT. #2
208	2'-0"	6'-8"	1-1/2"	⬠	SOLID CORE INTERIOR WOOD DOOR
209	2'-6"	6'-8"	1-1/2"	⬠	LOUVERED
210	2'-6"	6'-8"	1-1/2"	⬠	LOUVERED
211	3'-0"	6'-8"	1-3/4"	⬠	SOLID CORE INTERIOR WOOD DOOR FRONT DOOR APT. #3
212	2'-6"	6'-8"	1-1/2"	⬠	SOLID CORE INTERIOR WOOD DOOR
213	2'-0"	6'-8"	1-1/2"	⬠	LOUVERED
214	2'-6"	6'-8"	1-1/2"	⬠	LOUVERED
215	3'-0"	6'-8"	1-3/4"	⬠	SOLID CORE INTERIOR WOOD DOOR FRONT DOOR APT. #4
216	2'-0"	6'-8"	1-1/2"	⬠	SOLID CORE INTERIOR WOOD DOOR LOUVERED
217	2'-0"	6'-8"	1-1/2"	⬠	LOUVERED
218	2'-6"	6'-8"	1-1/2"	⬠	LOUVERED
219	2'-6"	6'-8"	1-1/2"	⬠	LOUVERED

ALL INTERIOR AND WOOD DOORS SHALL BE SIMPSON OR EQUAL.



### DOOR ELEVATIONS

SCALE: 1/4" = 1'-0"

### APPLIANCES

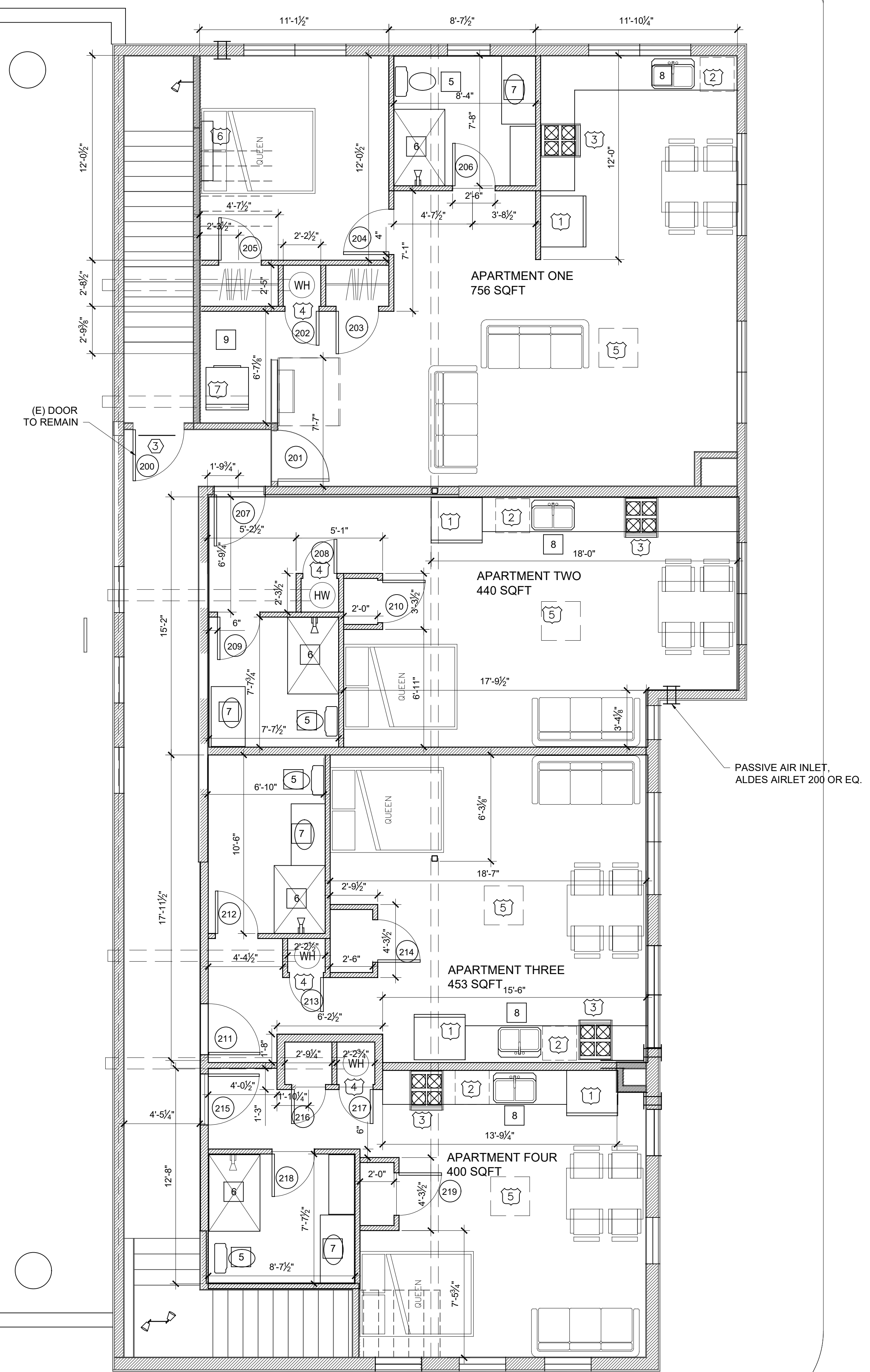
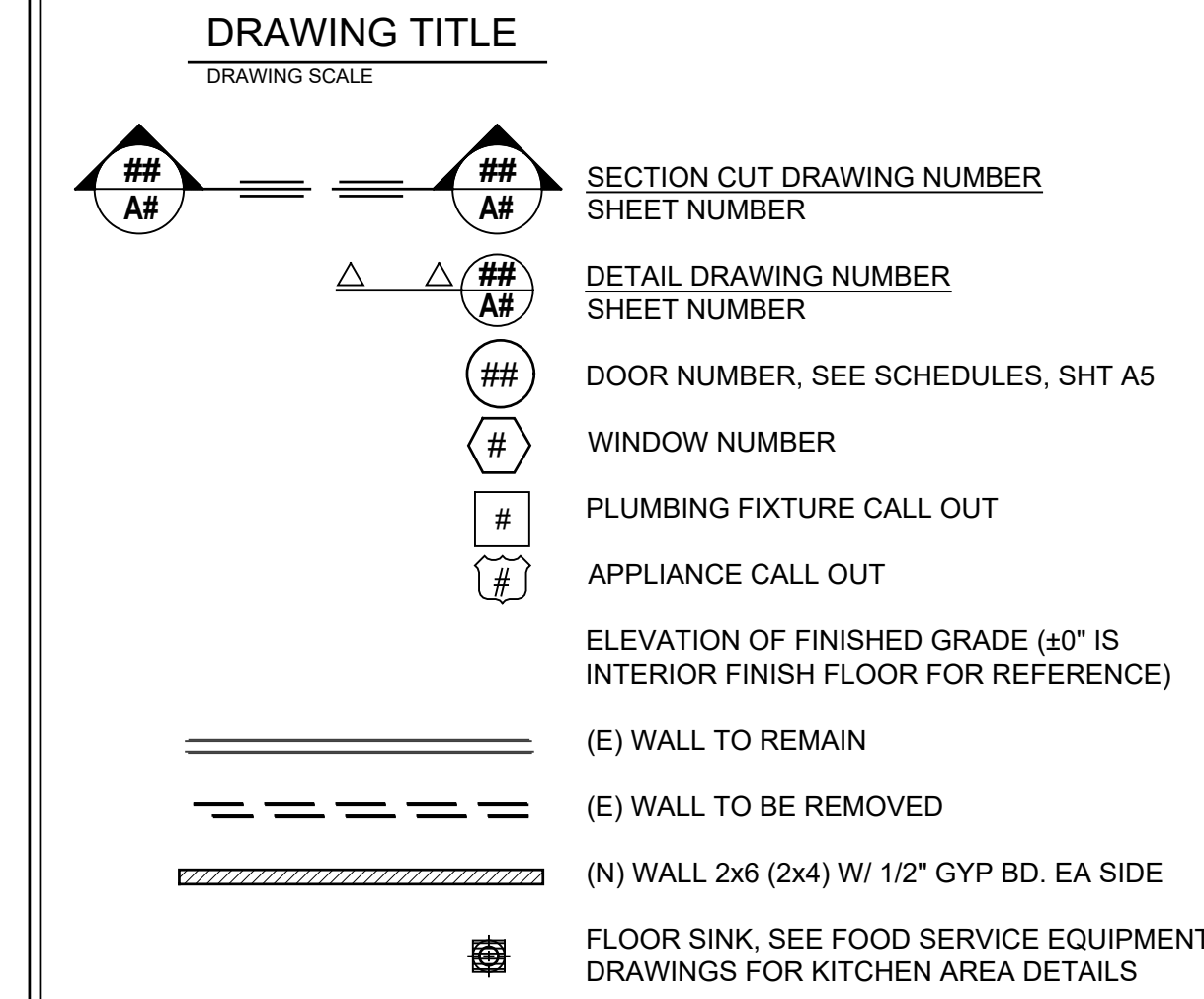
SYMBOL	ITEM	ROOM	MANUFACTURER/MODEL NO.	DIMENSIONS	COLOR	FAUCET/VALVES	MISCELLANEOUS NOTES
1	REFRIGERATOR	APTS 1-4					
2	DISHWASHER	APTS 1-4					
3	COOKSTOVE/OVEN	APTS 1-4					WITH EXHAUST HOOD TO OUTDOORS
4	HEAT PUMP ELECTRIC VOLUME WATER HEATER	APTS 1-4					ELECTRIC CASSETTE IN CEILING OUTDOOR CONDENSER ON ROOF
5	HEAT PUMP UNIT (INSIDE)	APTS 1-4					WALL MOUNT UNIT CONNECT TO SAME OUTDOOR UNIT AS CASSETTE
6	HEAT PUMP IN BEDROOM	APT 1					ELECTRIC
7	CLOTHES DRYER STACKABLE	APT 1					ELECTRIC

### FINISH SCHEDULE

ROOM NAME	FLOOR	BASE	WALLS		CEILINGS			REMARKS
			MATERIAL	FINISH	MATERIAL	FINISH	PL. HT.	
APARTMENTS 1-4	VINYL	WOOD	1/2" GYP. BD.	MEDITERRANEAN	5/8" GYP. BD.	MEDITERRANEAN	8'-6"	

REFER TO SHEET FST1 FOR ROOM FINISH SCHEDULE FOR GROUND FLOOR AREAS

### LEGEND TO SYMBOLS:



Kelly B. Grimes, Architect

P.O. Box 598  
Little River, CA 95456  
707-937-2904



REVISIONS	BY

NOTES:

REMODELING PLANS FOR:

**PAPA BEAR'S PIZZA**  
228 N. MAIN ST.  
FORT BRAGG, CA  
95437

A.P. #119-090-13

DATE: MARCH 20, 2023

SCALE: AS NOTED

DRAWN BY: KBG

JOB: POOS

SHEET:

**ENLARGED UPPER FLOOR PLAN**

**A2.2**

OF SHEETS

### REMODELED UPPER FLOOR PLAN

SCALE: 1/4" = 1'-0"

